

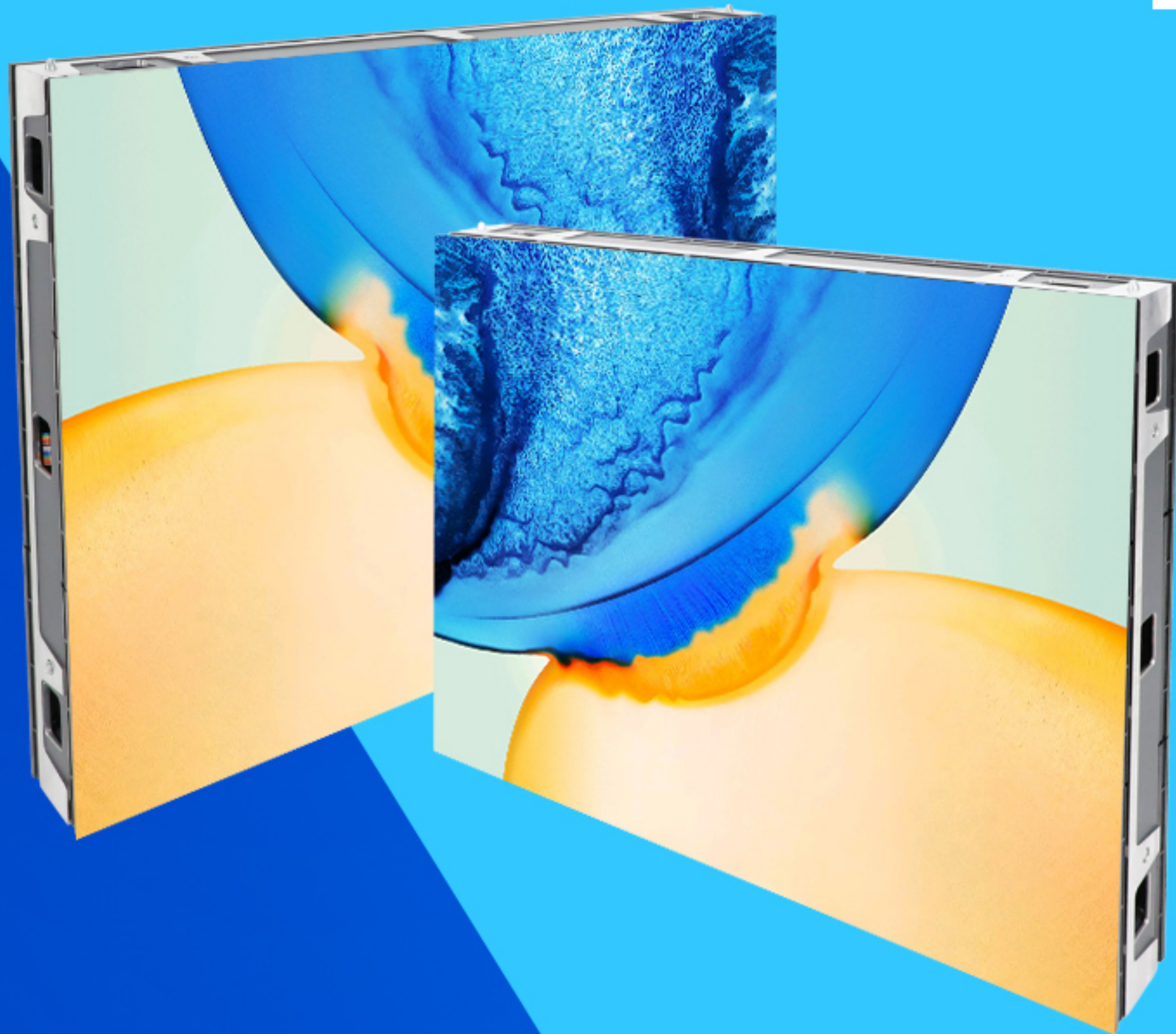
EA640DF

640x480mm Indoor Double Face LED Display

TRAVEL
NOW

Feature:

1. Double-sided display, can be viewed both front and back;
2. Double sides support front desk service;
3. Suitable for hanging installation;
4. 4:3 ratio design, lightweight cabinet;
5. High contrast, high refresh rate.



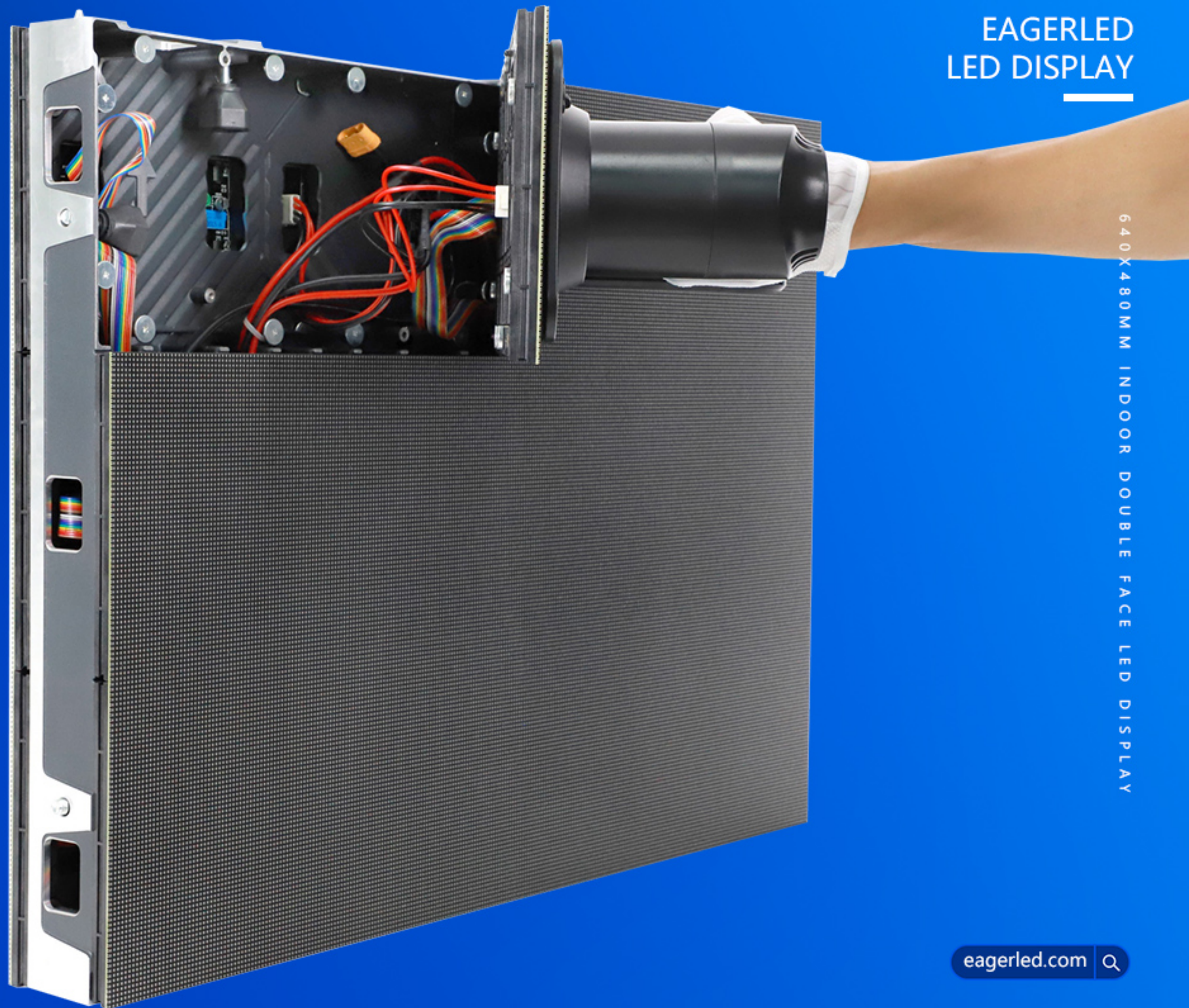
Double Face LED Display

Both front and back
are screens..



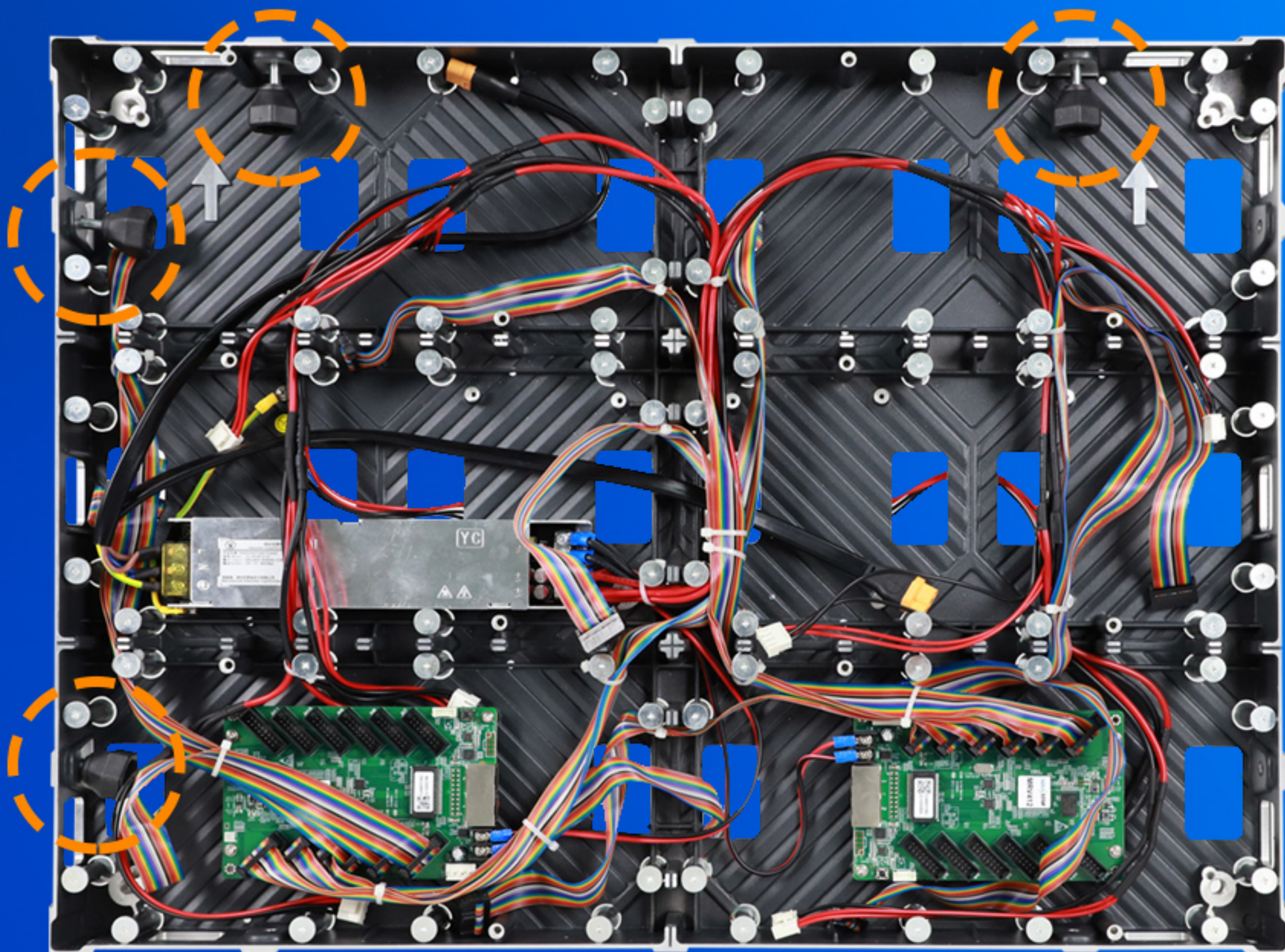
Front Service

Full front service design,
saving installation space



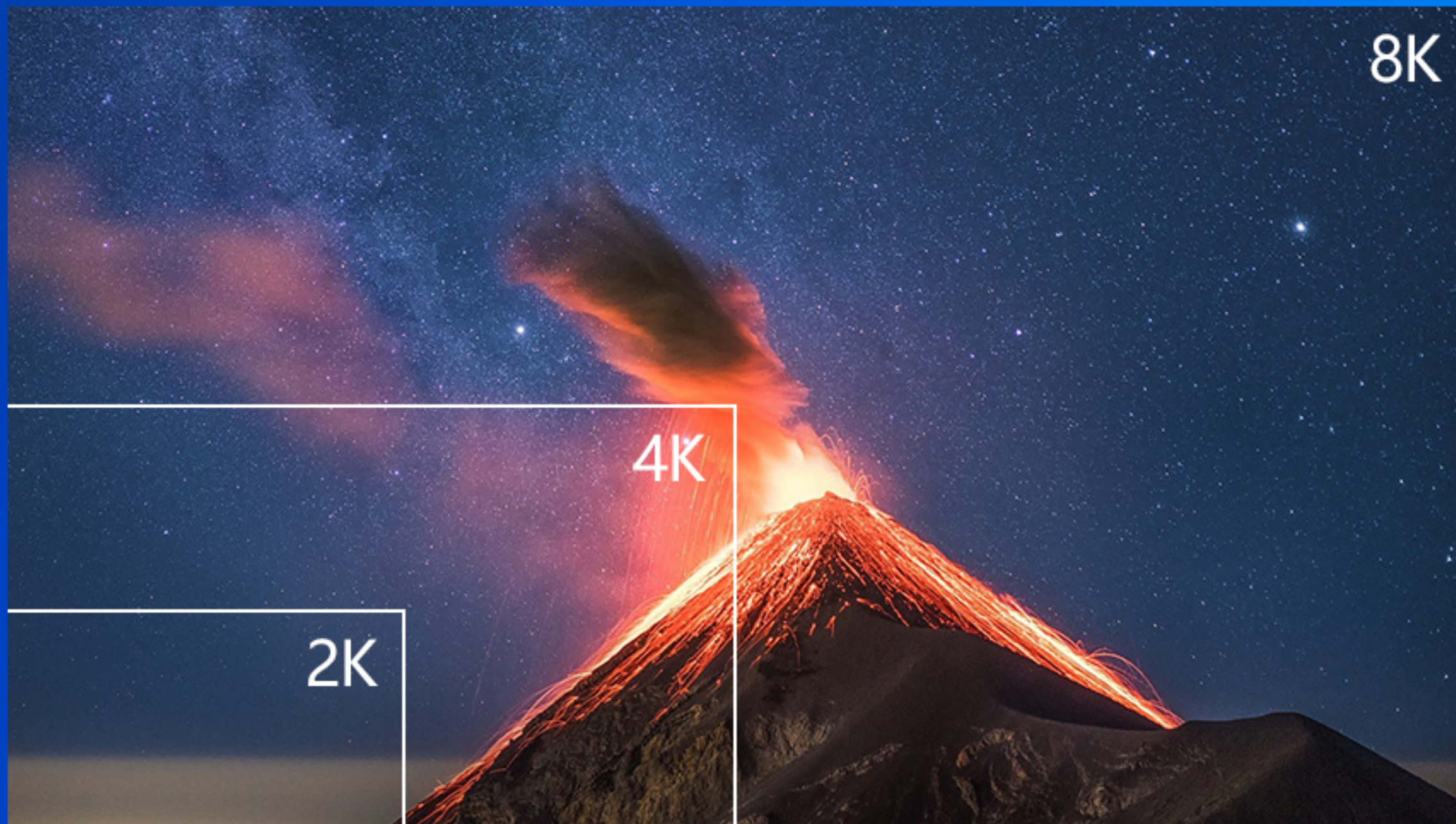
Quickly install

4 locks allow you to quickly install the LED display.



UHD 8K

Realize standard 2K, 4K,
8K resolution, HD
experience



Superb Display Effect

640X480MM INDOOR DOUBLE FACE LED DISPLAY

High contrast
3840Hz high refresh rate



EagerLED EA640DF

Low contrast
Low refresh rate



Competing Product

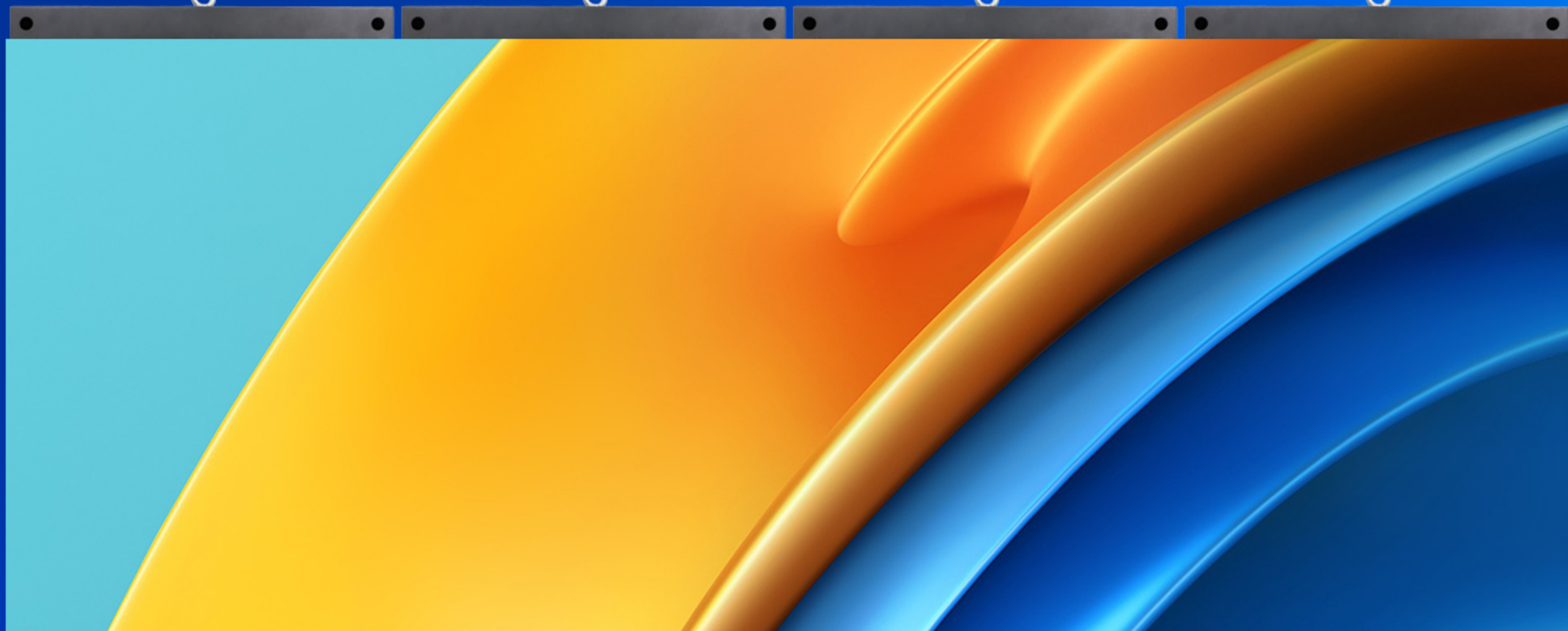
640X480MM INDOOR DOUBLE FACE LED DISPLAY

Hanging Installation

Suitable for indoor hanging installation

640X480MM INDOOR DOUBLE FACE LED DISPLAY

640X480MM INDOOR DOUBLE FACE LED DISPLAY



Multiple Applications

640X480MM INDOOR DOUBLE FACE LED DISPLAY



640X480MM INDOOR DOUBLE FACE LED DISPLAY

Packing Method

(Refer to the packaging method)

Cabinet size(mm)	640*480(L*H)
Packing Quantity	12pcs/carton
Package Size(mm)	1380*520*1150(L*H*D)



Eagerled EA640DF Indoor HD LED Display Parameter

	Mode	EA640DF-P1.25	EA640DF-P1.53	EA640DF-P1.86	EA640DF-P2	EA640DF-P2.5	EA640DF-P3.076	EA640DF-P4	
Module Parameter	Pixel Pitch	1.25mm	1.53mm	1.86mm	2mm	2.5mm	3.076mm	4mm	
	Pixel Configuration	SMD1010	SMD1010	SMD1515	SMD1515	SMD2020	SMD2020	SMD2020	
	Driving Mode	1/64 duty	1/52 duty	1/43 duty	1/40 duty	1/32 duty	1/26 duty	1/20 duty	
	Module Resolution(Pixel)	256(L)*128(H)	208(L)*104(H)	172(L)*86(H)	160(L)*80(H)	128(L)*64(H)	104(L)*52(H)	80(L)*40(H)	
	Density	640,000pixels/m ²	422,500pixels/m ²	288,906pixels/m ²	250,000pixels/m ²	160,000pixels/m ²	105,688pixels/m ²	62,500pixels/m ²	
	Module Size(mm)	320(L)*160(H)							
	Module Mask	Pure black mask---high contrast screen							
	Module Quantity in a Cabinet	2(L)*3(H)							
Cabinet Parameter	Cabinet Dimension(mm)	640(L)*480(H)*70(D)							
	Cabinet Material	Die-cast aluminum							
	Cabinet Weight	≈9 KG							
	Protection Grade	IP31							
	Cabinet Resolution	512(L)*384(H)	416(L)*104(H)	344(L)*258(H)	320(L)*240(H)	256(L)*192(H)	208(L)*156(H)	160(L)*120(H)	
Electricity Parameter	Brightness	600cd/m ²	600cd/m ²	600cd/m ²	700cd/m ²	800cd/m ²	800cd/m ²	700cd/m ²	
	Best Viewing Distance	≥1.25m	≥1.53m	≥1.86m	≥2m	≥2.5m	≥3m	≥4m	
	Max. Power Consumption	≤580W/m ²	≤580W/m ²	≤580W/m ²	≤439W/m ²	≤457W/m ²	≤413W/m ²	≤351W/m ²	
	Avg. Power Consumption	195W/m ²	195W/m ²	195W/m ²	150W/m ²	153W/m ²	138W/m ²	117W/m ²	
	Screen Refresh Frequency	≥3840Hz	≥3840Hz	≥3840Hz	≥3840Hz	1920Hz / 3840Hz	1920Hz / 3840Hz	1920Hz / 3840Hz	
	Frame Frequency	≥60Hz							
	Gray Grade	14 bits							
	Viewing Angle	140°(Horizontal); 140°(Vertical)							
	Display Color	4.4 trillion colors							
	Brightness Adjustment	100 grades by software or automatically by sensor							
	Operation Power	AC100-240V 50-60Hz Switchable							
	Input Signal	Composite Video, S-video, DVI, HDMI, SDI, HD-SDI							
	Control Distance	100M (Ethernet cable); 20KM (Optical fiber cable)							
	Support VGA Mode	800*600, 1024*768, 1280*1024, 1600*1200							
	Color Temperature	2000—9500 adjustable							
	Brightness Correction	Pixel by pixel, module by module, cabinet by cabinet							
	Working Temperature	-10 ~ +60 °C							
	Storage Temperature	-30 ~ +70 °C							
	Working Humidity	10% ~ 90% RH							
	Lifetime	100,000 hours							
MTBF	>10,000 hours								
Continuous Operating Time	≥72 hours								
Out-of-Control Pixel Rate	≤0.01%								

EagerLED Leading LED Display Manufacturer



Whatsapp

+86 152 2013 3050



Website

eagerled.com



Youtube

[@EagerLED](https://www.youtube.com/@EagerLED)



Tiktok

[@eagerleddisplay](https://www.tiktok.com/@eagerleddisplay)