

INDOOR & OUTDOOR 500X500MM RENTAL LED DISPLAY

INDOOR & OUTDOOR 500X500MM RENTAL LED DISPLAY

EA500H5

Indoor & Outdoor
500x500mm Rental LED Display

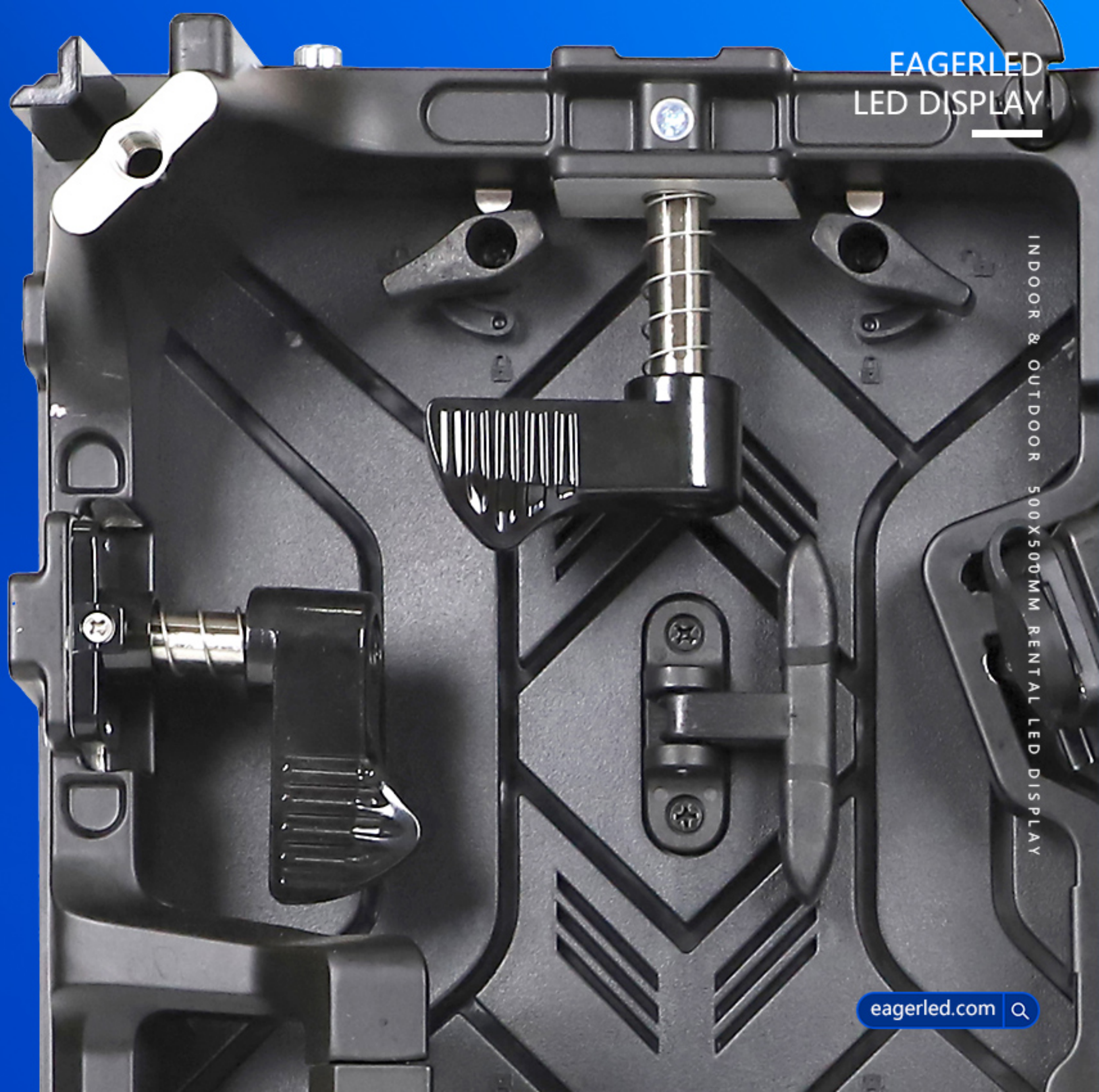
Feature:

1. Configure quick lock, support quick installation;
2. Corner protection design to protect the LED module;
3. front and rear service design;
4. Hard Connection Design, with detachable Power box and HUB Poard;
5. 500x500mm size, lightweight design.
6. Remove the power box from the front of the cabinet.



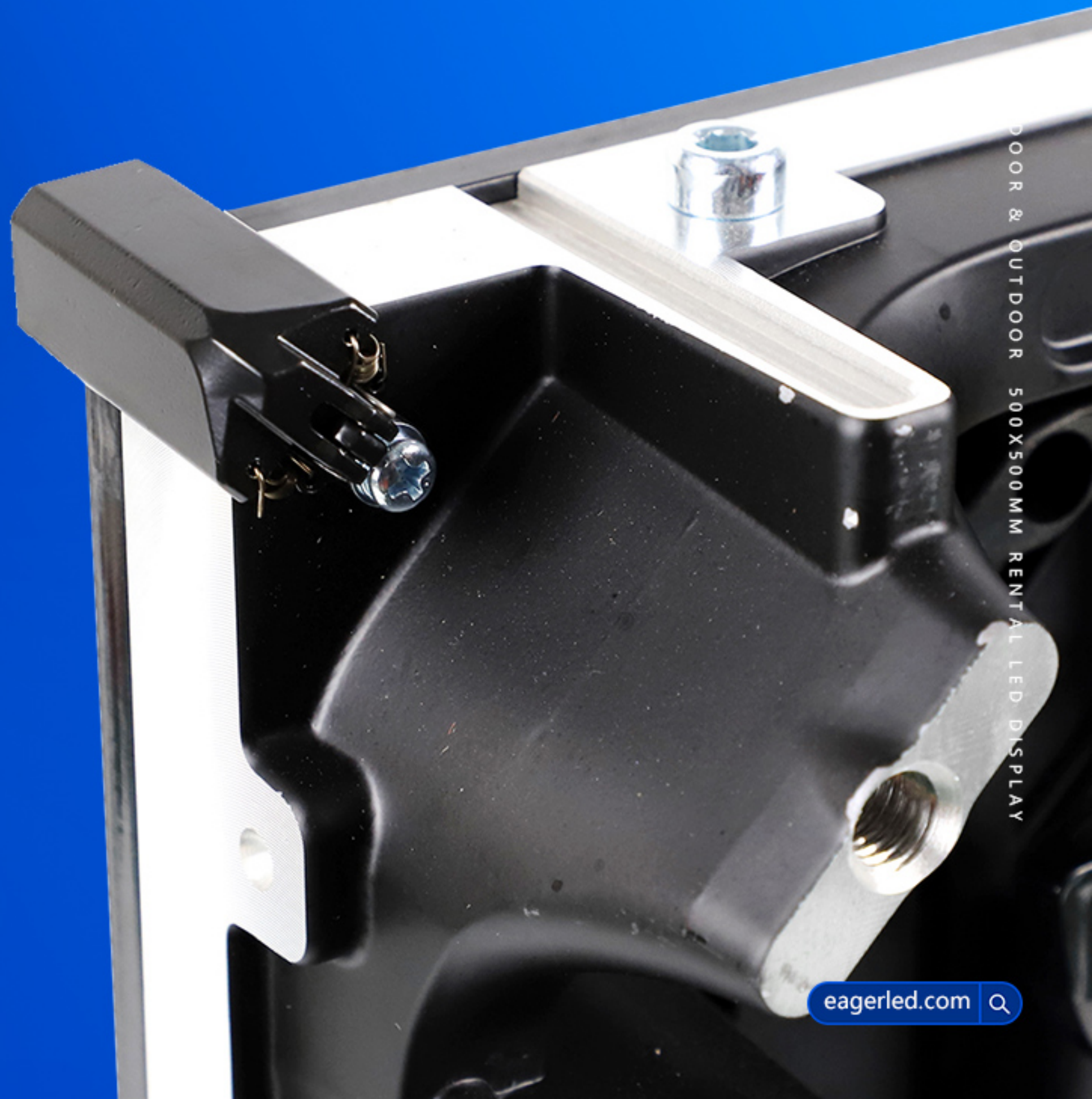
Quick Install

One-man installation;
fast lock design.



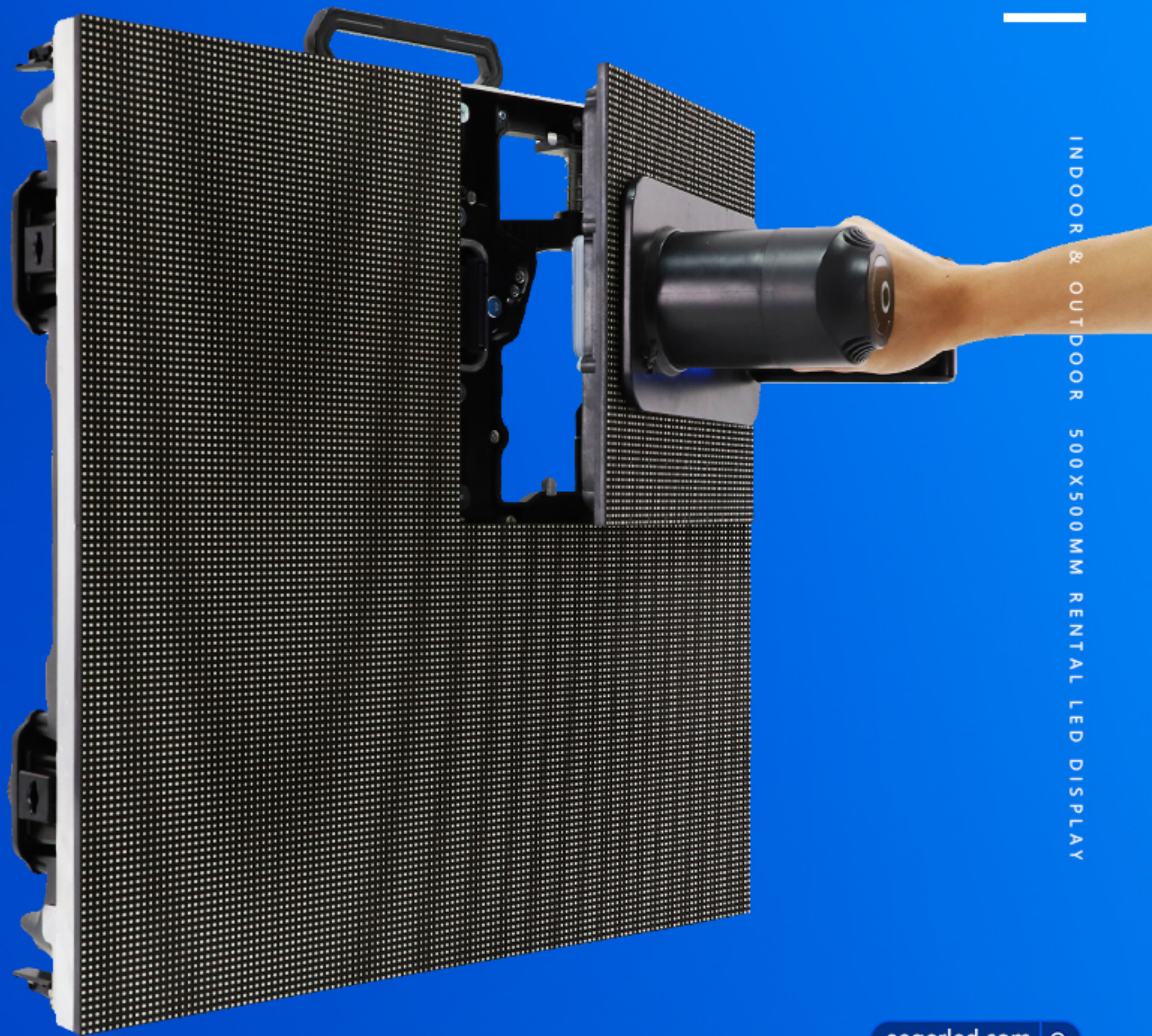
Corner Protector

Anti-Collision on four corners,
protect the LED lamp.



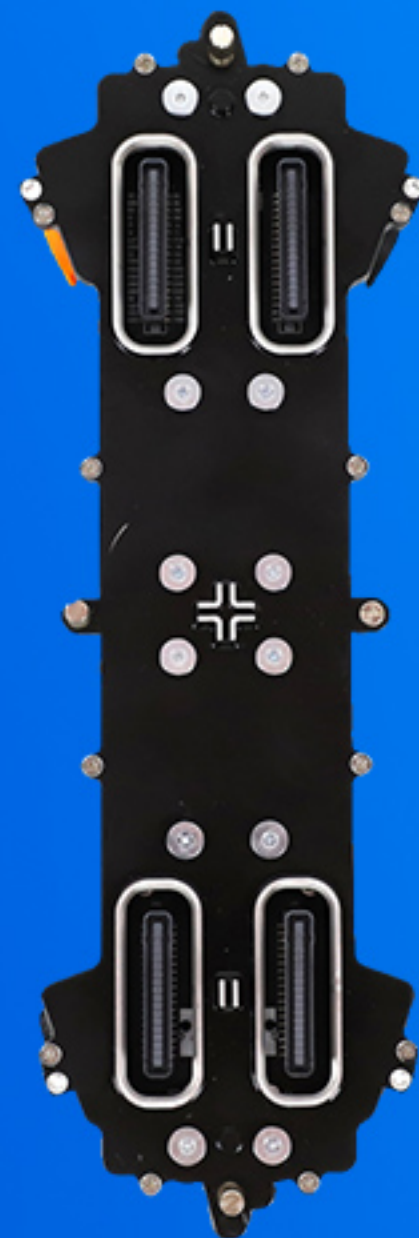
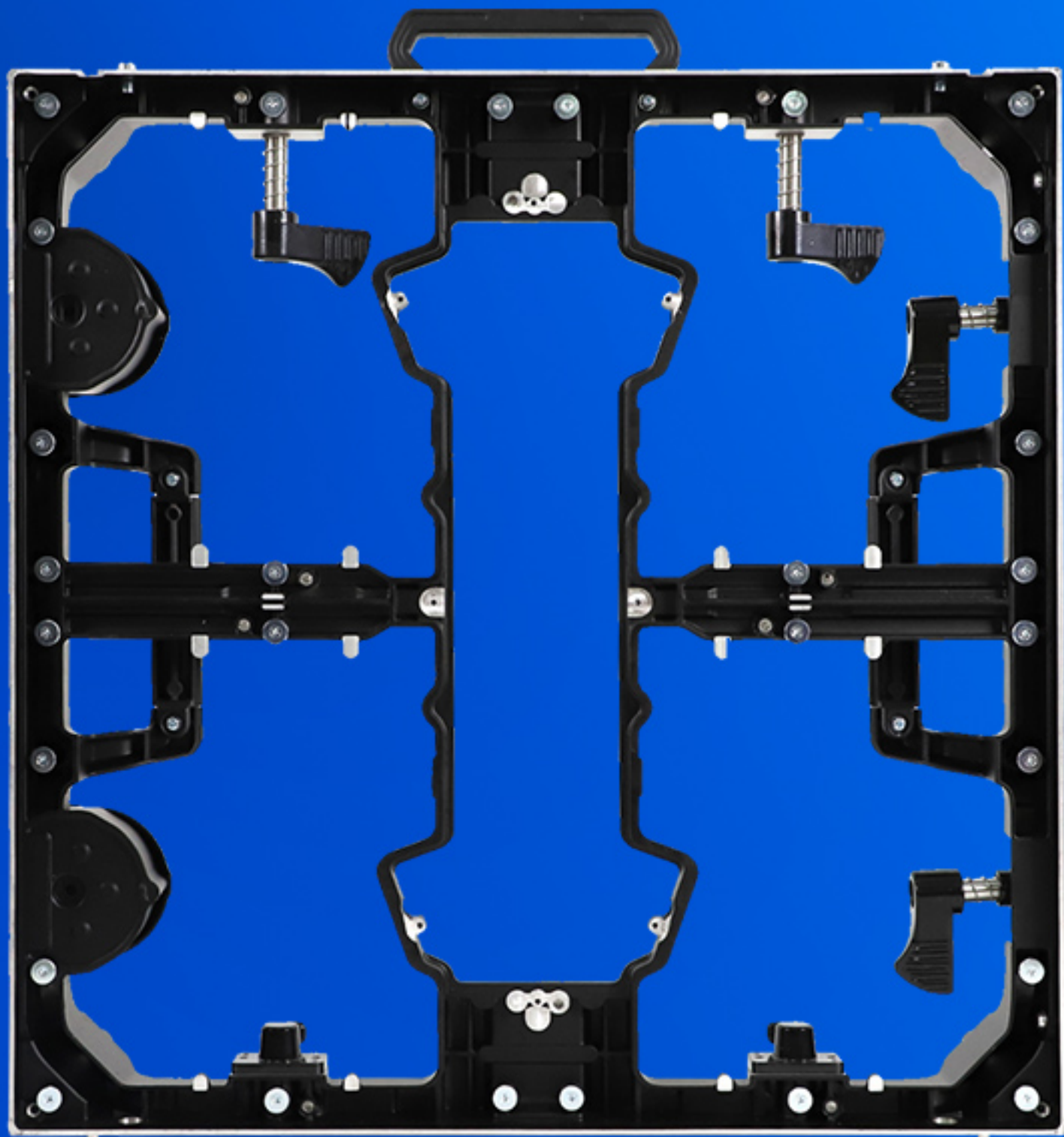
Front & Rear Service

EA500H5 series adopts front and rear design. LED panels are easy to install.



Detachable Back Cover

Remove the power box
from the front of the
cabinet.



Curved lock

Install curve locks for curved installation.(Optional)



Superb Display Effect

INDOOR & OUTDOOR 500X500MM RENTAL LED DISPLAY

3840Hz high refresh rate
High gray scale



EagerLED EA500H5

Low refresh rate
Low grayscale



Competing Product

INDOOR & OUTDOOR 500X500MM RENTAL LED DISPLAY

Installation Method

INDOOR & OUTDOOR 500X500MM RENTAL LED DISPLAY



Stacking installation



Hanging installation

INDOOR & OUTDOOR 500X500MM RENTAL LED DISPLAY

Multiple Applications

INDOOR & OUTDOOR 500X500MM RENTAL LED DISPLAY



INDOOR & OUTDOOR 500X500MM RENTAL LED DISPLAY

Packing Method

(Refer to the packaging method)

Cabinet size(mm)	500*500(L*H)
Packing Quantity	8pcs/carton
Package Size(mm)	980*585*754(L*W*H)



EagerLED Leading LED Display Manufacturer



Whatsapp

+86 152 2013 3050



Website

eagerled.com



Youtube

@EagerLED



Tiktok

@eagerleddisplay