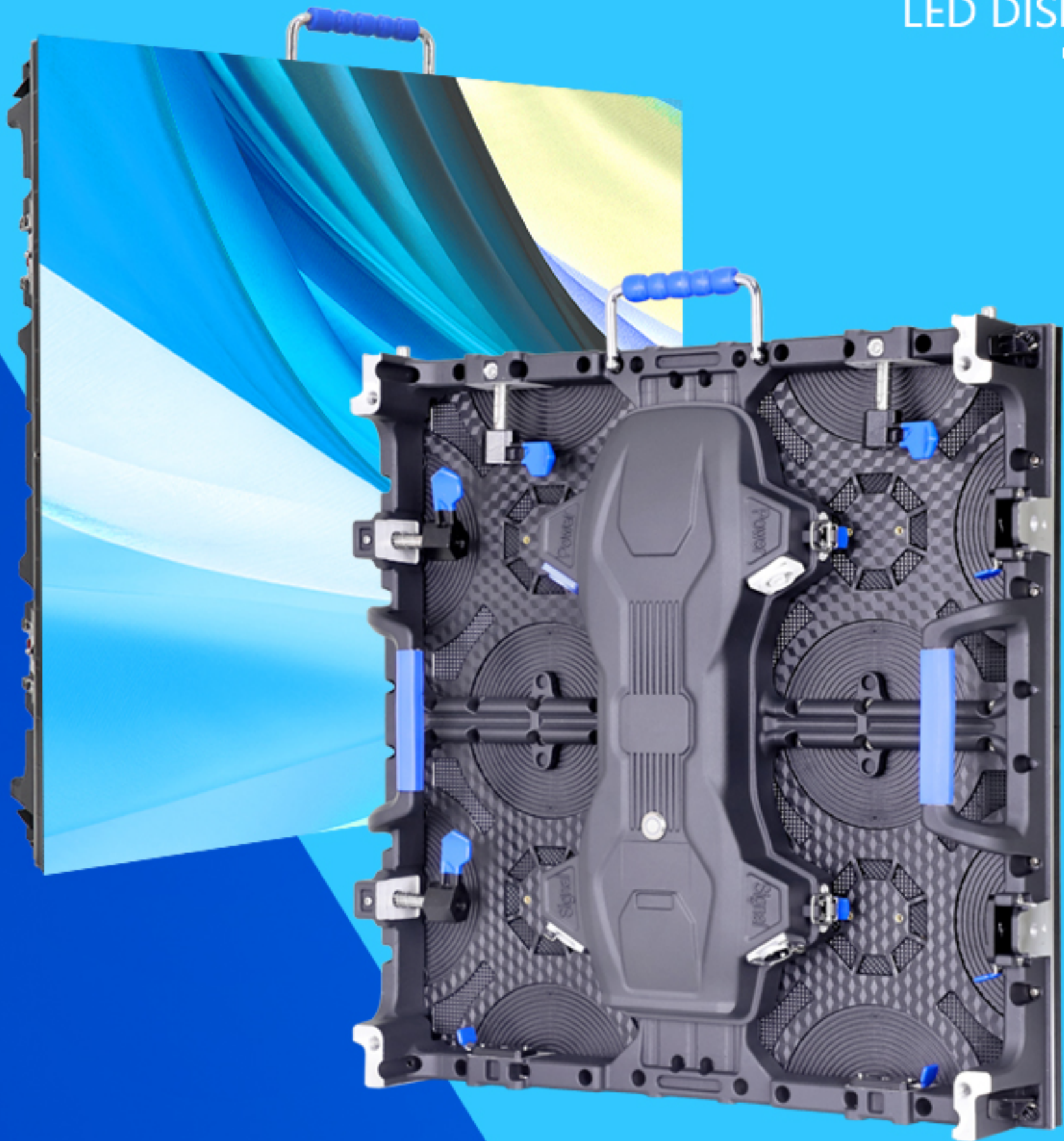


# EA500C4

Indoor & Outdoor  
500x500mm Rental LED Display

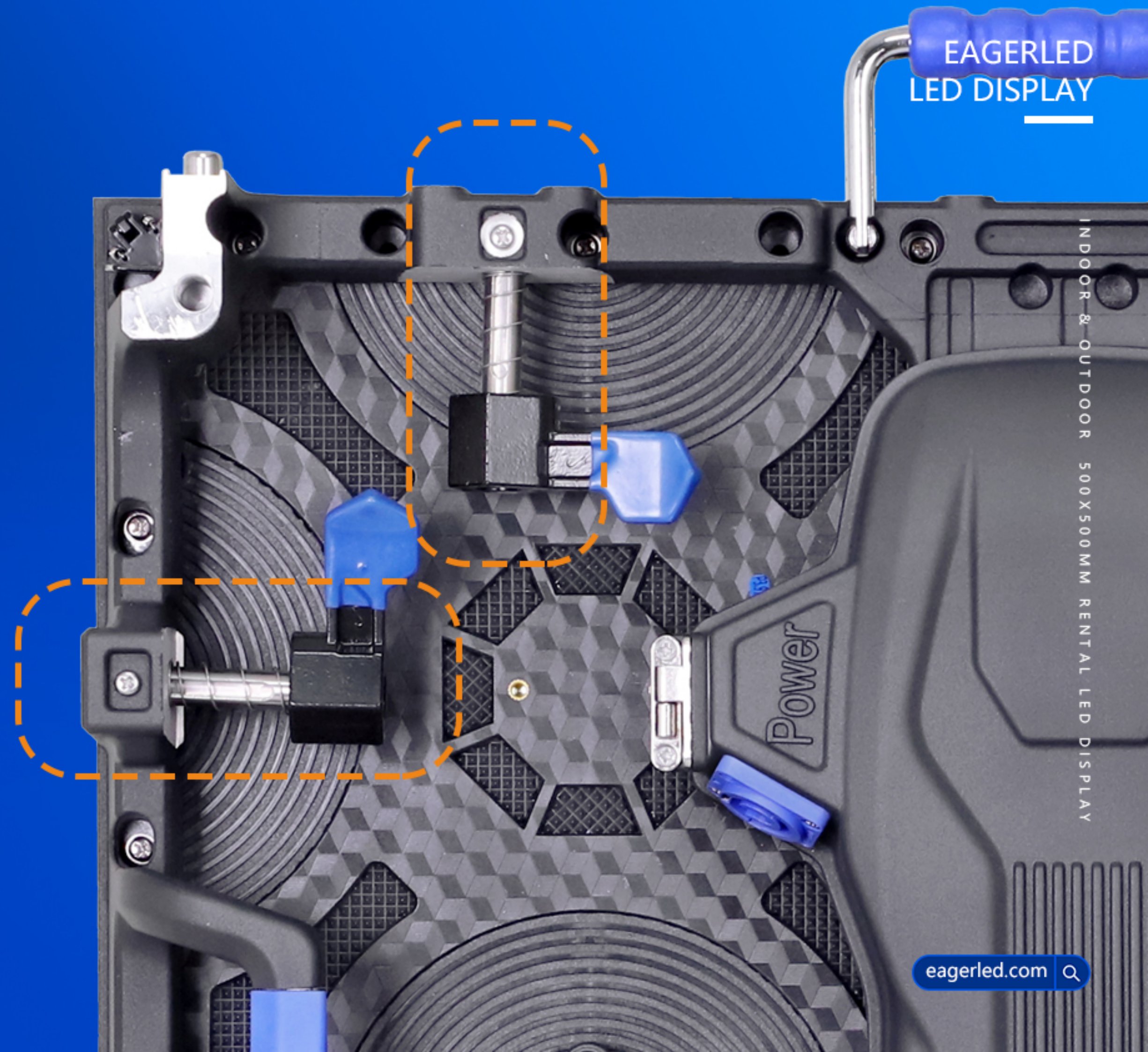
## Feature:

1. Configure quick lock, support quick installation;
2. Corner protection design to protect the LED module;
3. Indoor series, support front maintenance design;
4. The back cover of the power supply can be opened for quick maintenance;
5. 500x500mm size, lightweight design.



# Quick Install

One-man installation;  
fast lock design.



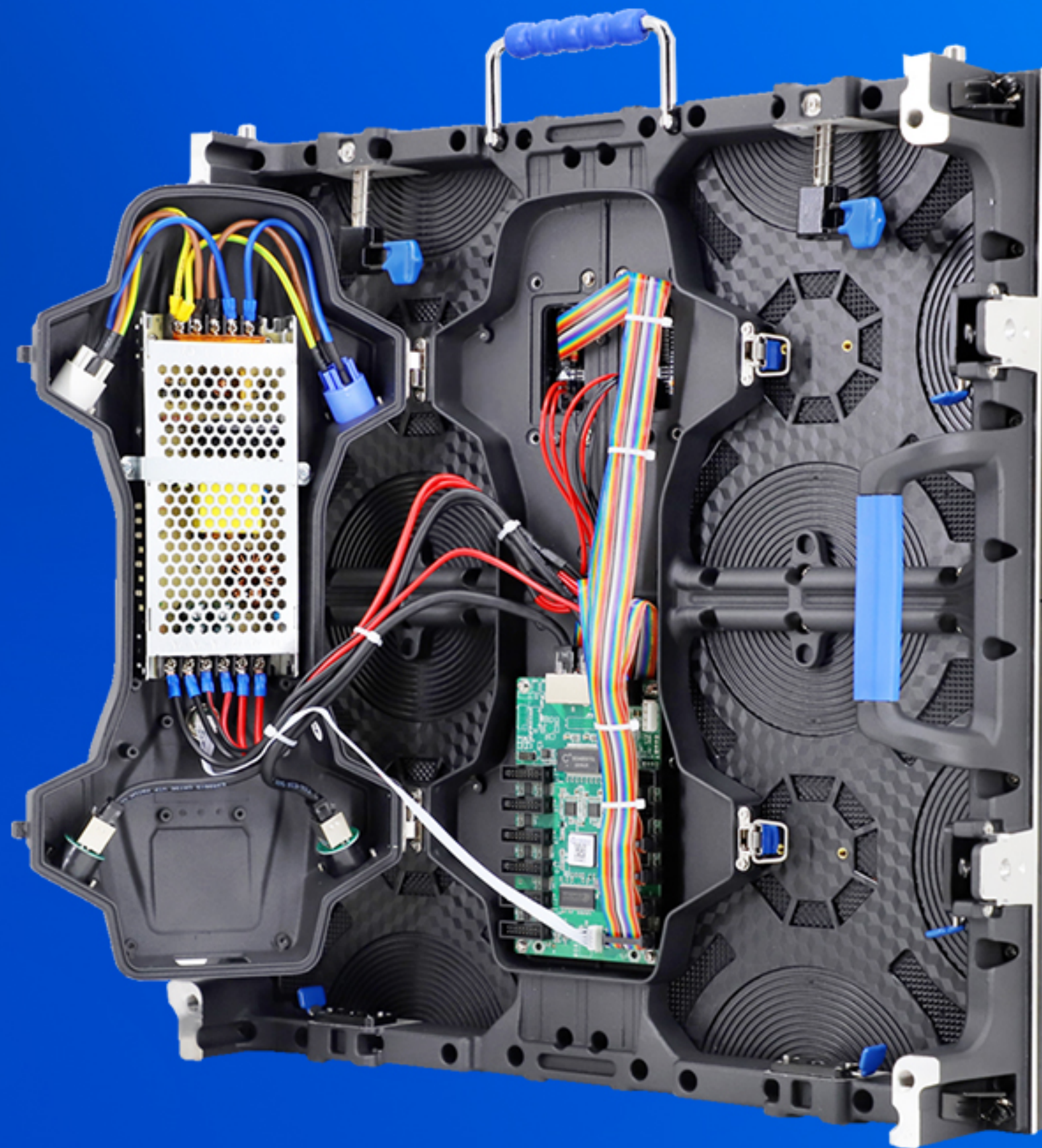
# Corner Protector

Anti-Collision on four corners,  
protect the led lamp.



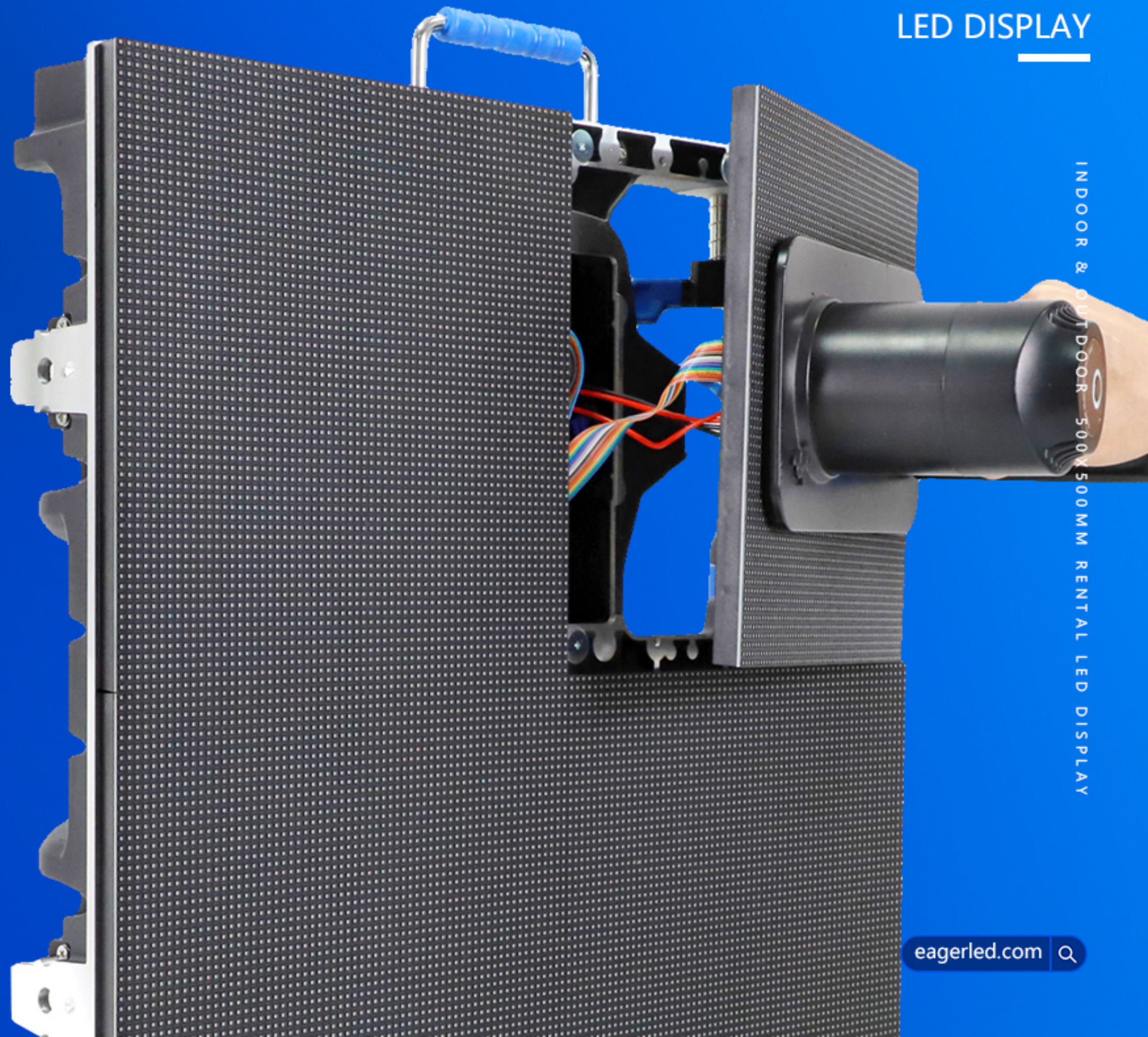
## Easy to Maintain

The back cover of the power supply can be quickly opened for easy maintenance.



# Front Service

Indoor EA500C4 series  
supports front service design  
(Optional)



# Curved lock

Install curve locks for curved installation. (Optional)



INDOOR & OUTDOOR 500X500MM RENTAL LED DISPLAY

INDOOR & OUTDOOR 500X500MM RENTAL LED DISPLAY

# Superb Display Effect

INDOOR & OUTDOOR 500X500MM RENTAL LED DISPLAY

INDOOR & OUTDOOR 500X500MM RENTAL LED DISPLAY



3840Hz high refresh rate  
High gray scale

EagerLED EA500C4



Low refresh rate  
Low grayscale

Competing Product

VS



# Installation Method

INDOOR & OUTDOOR 500X500MM RENTAL LED DISPLAY



Stacking installation

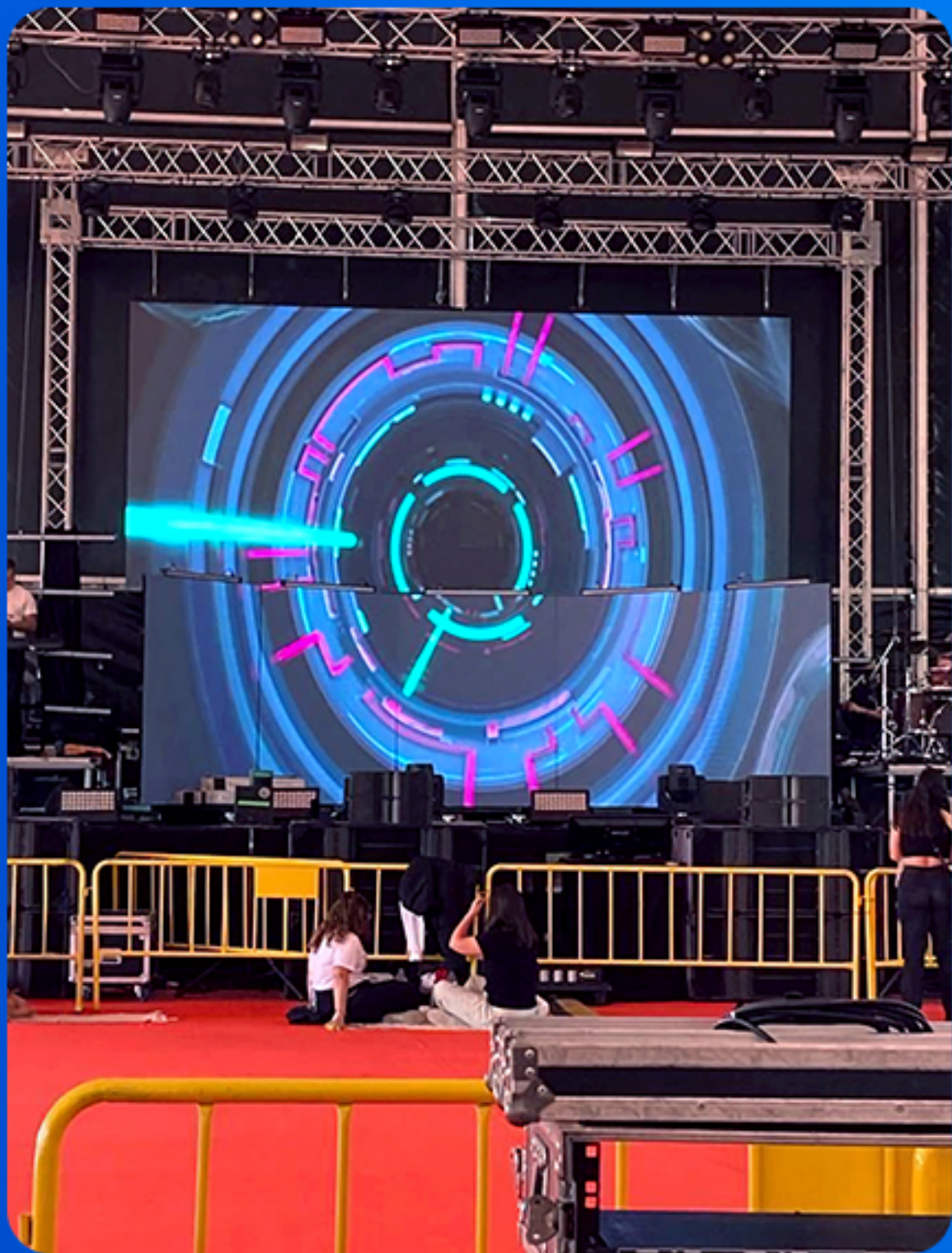


Hanging installation

INDOOR & OUTDOOR 500X500MM RENTAL LED DISPLAY

# Multiple Applications

INDOOR & OUTDOOR 500X500MM RENTAL LED DISPLAY



INDOOR & OUTDOOR 500X500MM RENTAL LED DISPLAY



# Packing Method

(Refer to the packaging method)

Cabinet size(mm)	500*500(L*H)
Packing Quantity	8pcs/carton
Package Size(mm)	980*585*754(L*W*H)







# EagerLED Leading LED Display Manufacturer



Whatsapp

+86 152 2013 3050



Website

eagerled.com



Youtube

@EagerLED



Tiktok

@eagerleddisplay