

480X480MM INDOOR HD LED DISPLAY

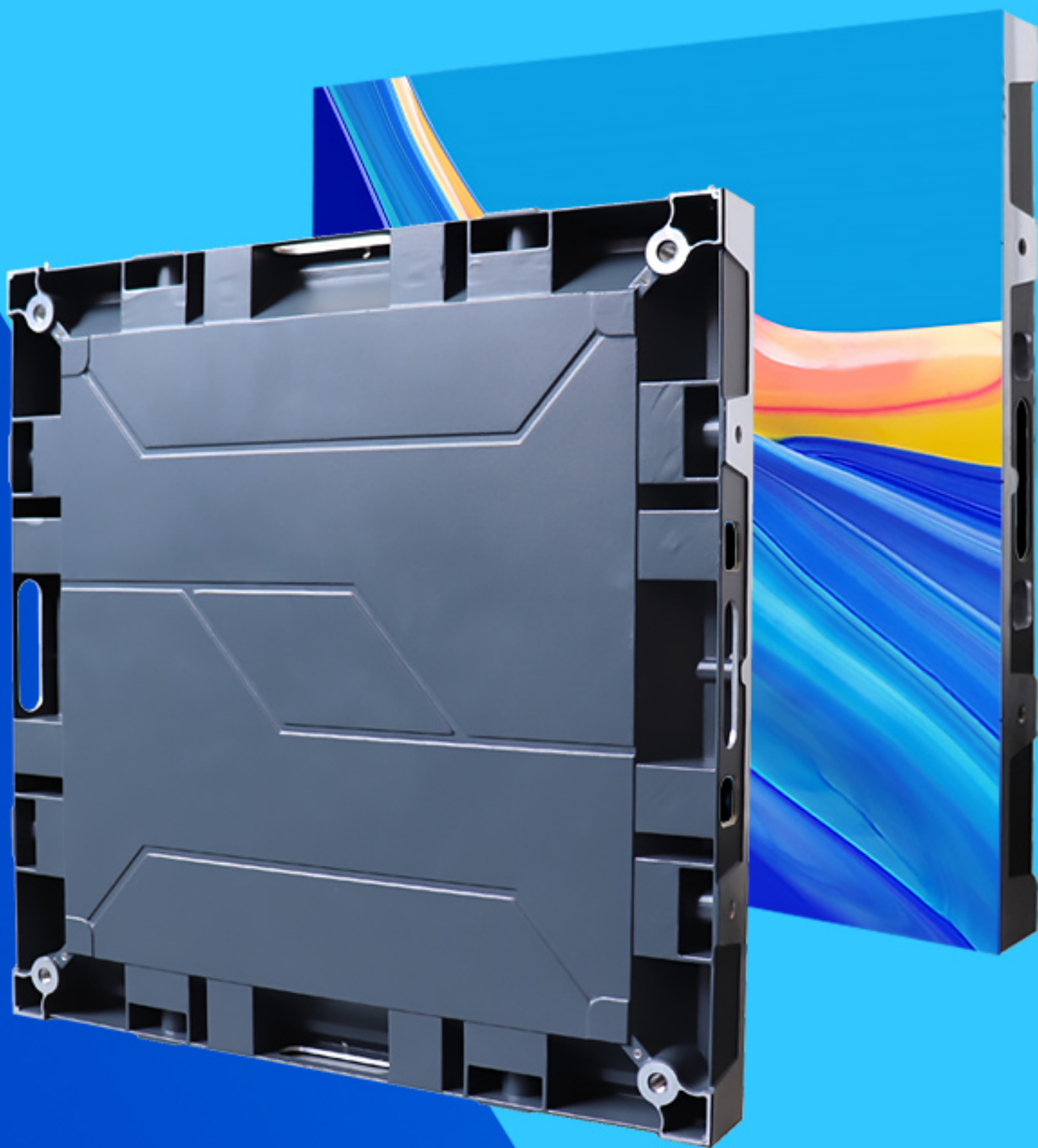
480X480MM INDOOR HD LED DISPLAY

EA480F1

480x480mm Indoor HD LED Display

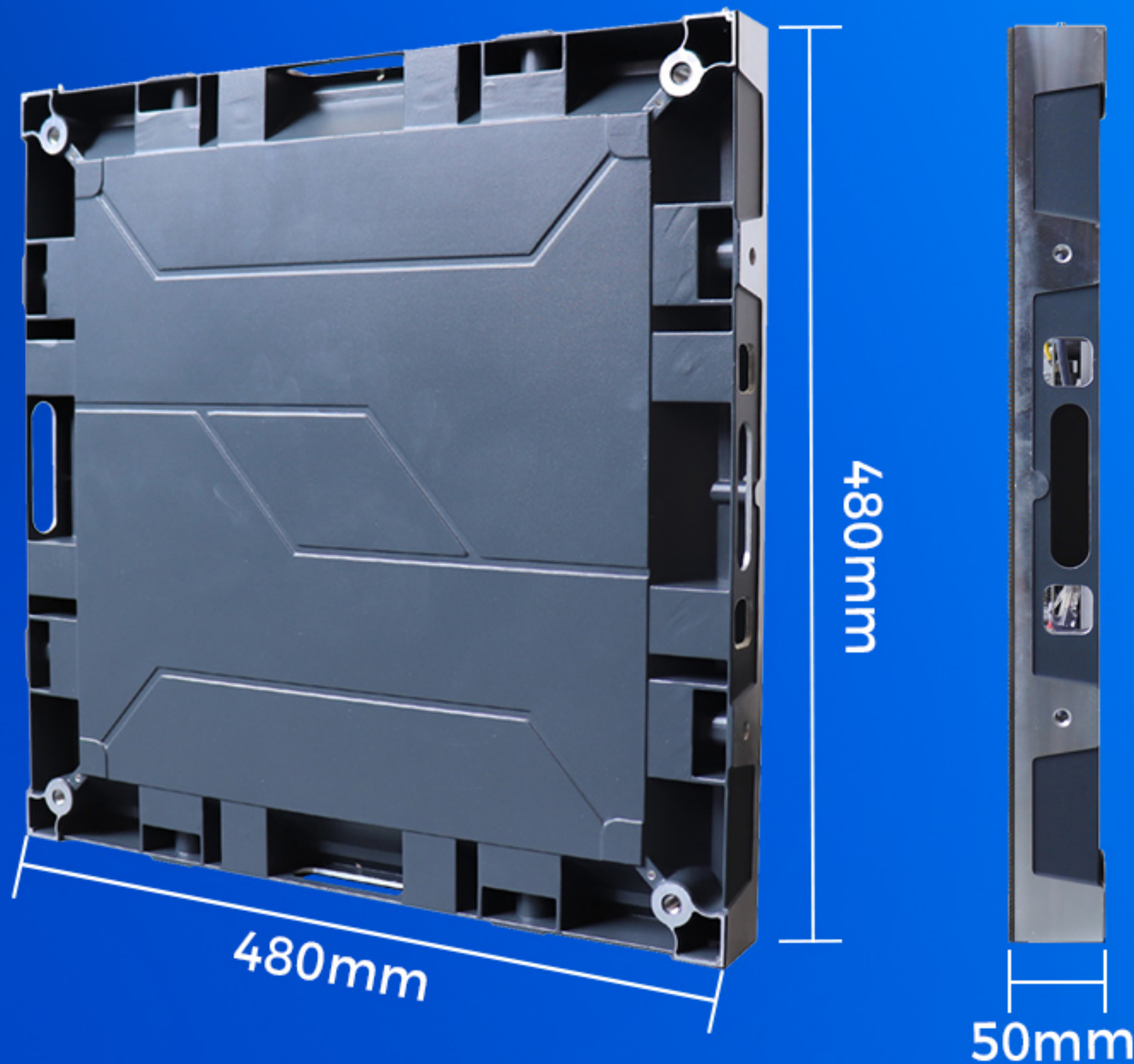
Feature:

1. Ultra-thin and lightweight Cabinet
2. Full front desk service, saving installation space
3. No cable connection between modules and cabinets
4. 140° Wide Viewing Angle
5. High contrast for unrivaled visual performance



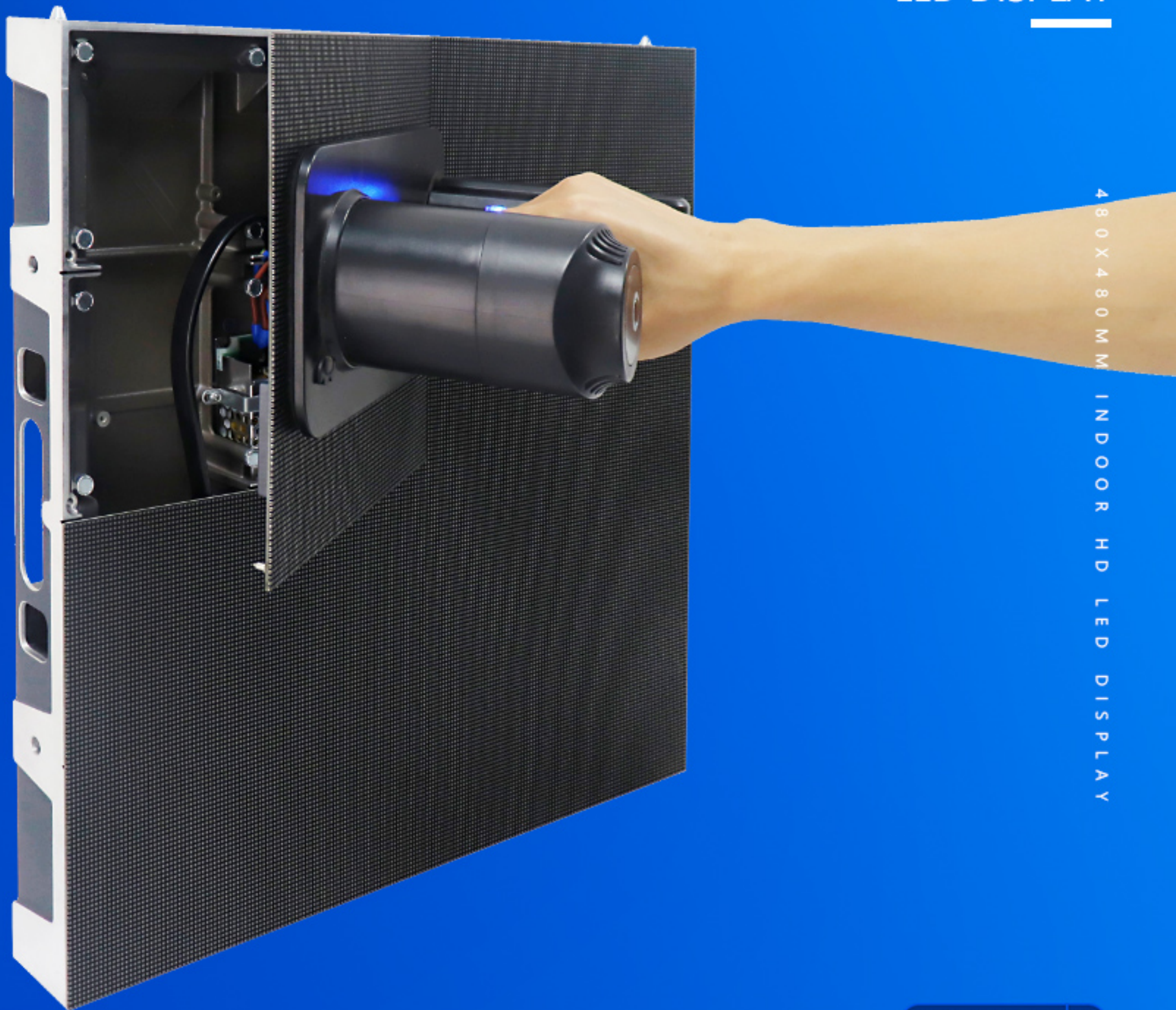
Light and Thin

Thin and light cabinet,
the thickness is only 50mm,
and the weight is only 5.6kg



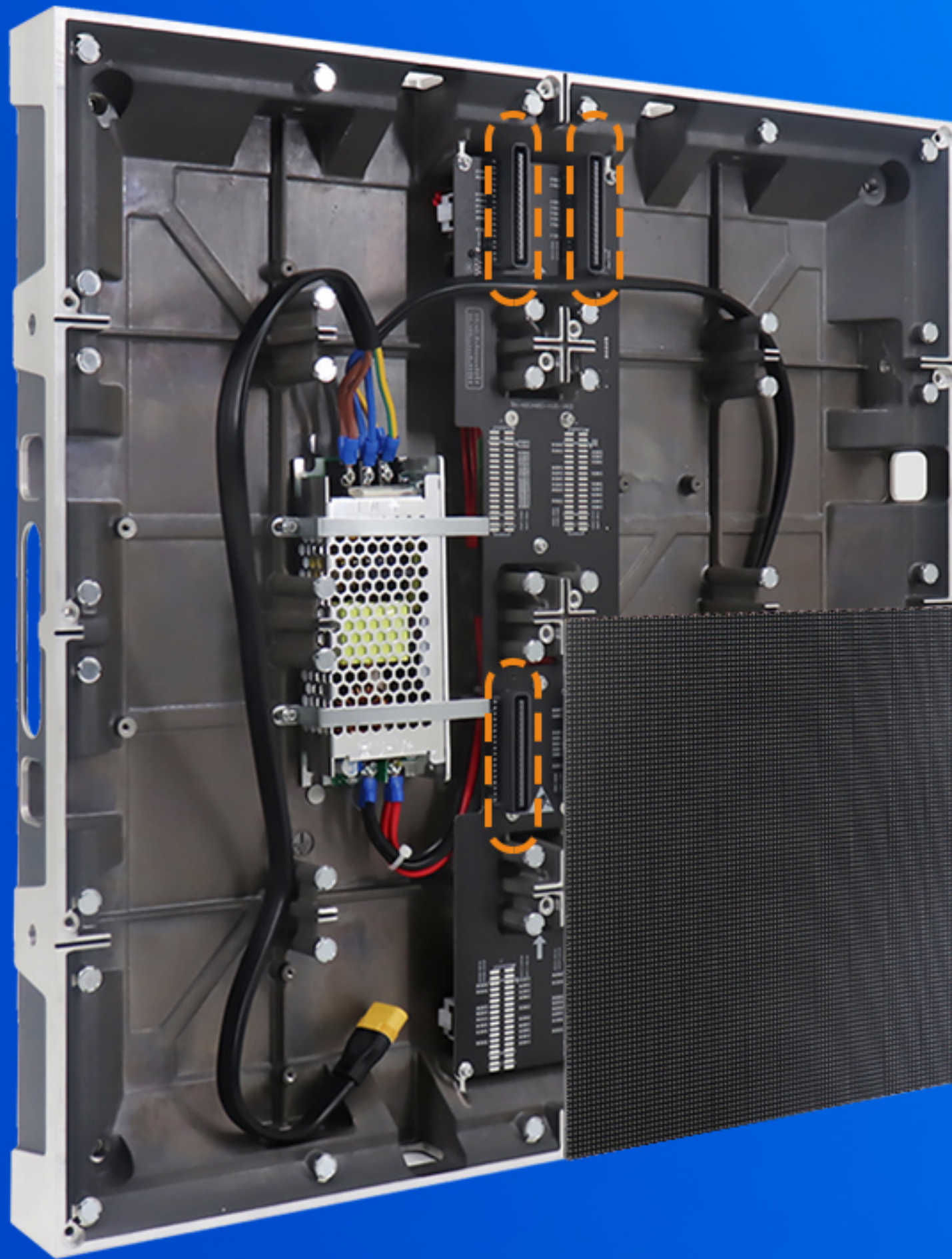
Front Service

Full front service design,
saving installation space



Wireless Connection

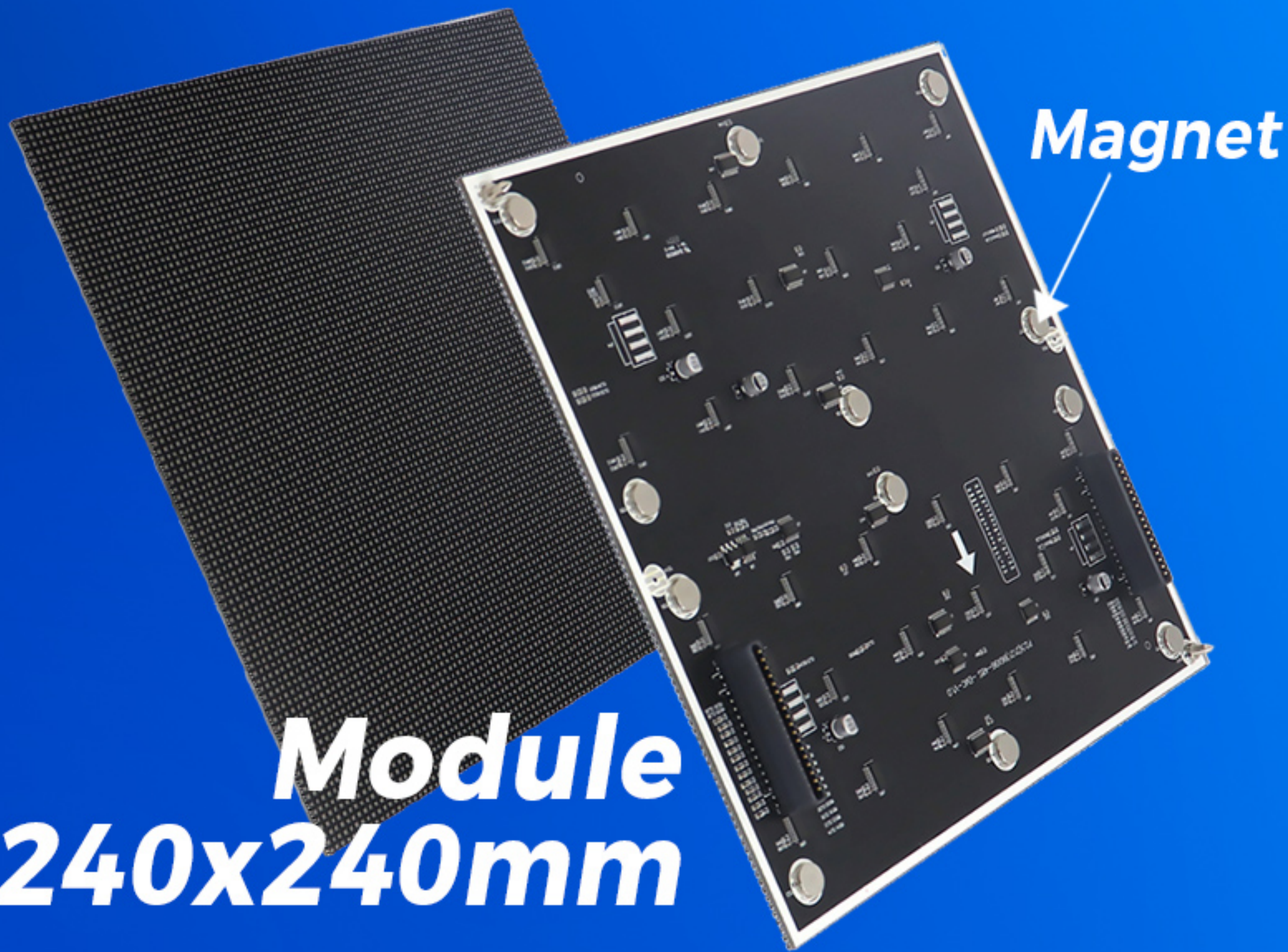
No cable connection between
LED modules and cabinets



Thin LED Panel

Lightweight magnetic suction module, use vacuum suction cup for front service

Module
240x240mm



Superb Display Effect

High contrast
3840Hz high refresh rate

Low contrast
Low refresh rate



EagerLED EA480F1

Competing Product

480X480MM INDOOR HD LED DISPLAY

480X480MM INDOOR HD LED DISPLAY

Wide Viewing Angle

140° wide viewing angle allows you to get more vision



140°
VIEWING ANGLE

Installation Method

480X480MM INDOOR HD LED DISPLAY



Stacking installation

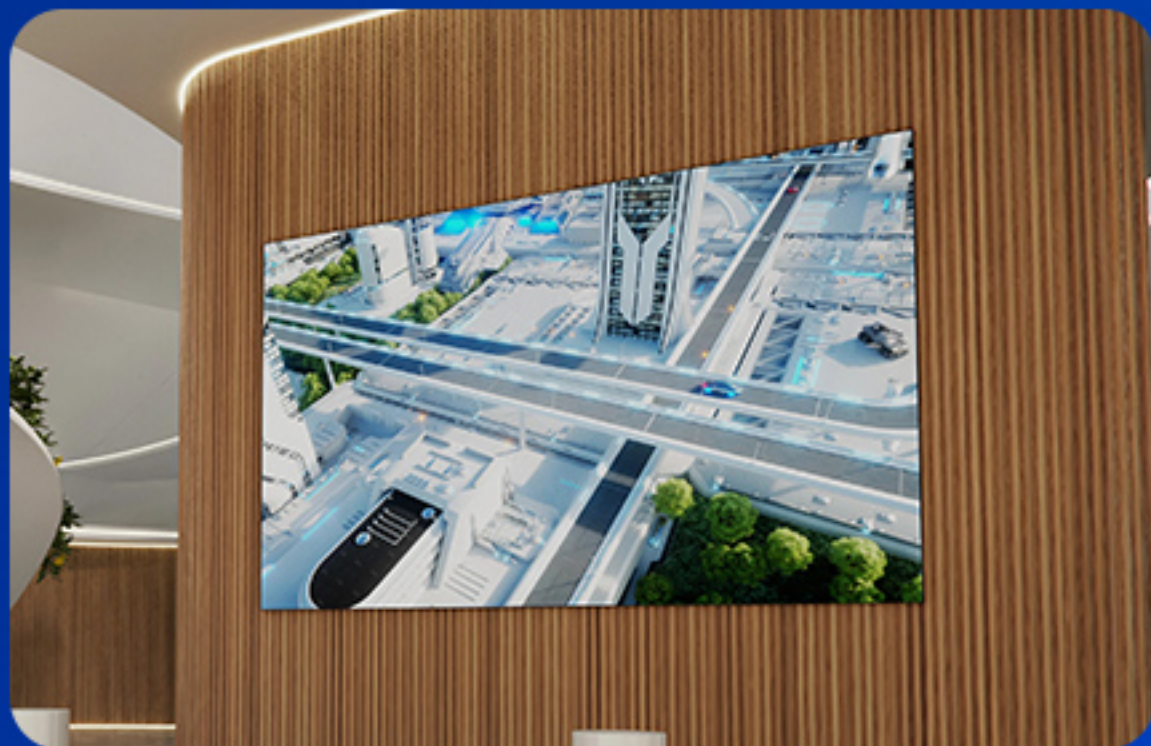


Wall installation

480X480MM INDOOR HD LED DISPLAY

Multiple Applications

480X480MM INDOOR HD LED DISPLAY



480X480MM INDOOR HD LED DISPLAY



Packing Method

(Refer to the packaging method)

Cabinet size(mm)	480*480(L*H)
Packing Quantity	12pcs/carton
Package Size(mm)	530*388*680(L*H*D)



480X480MM INDOOR HD LED DISPLAY

480X480MM INDOOR HD LED DISPLAY

Eagerled EA480F1 Indoor HD LED Display Parameter

	Mode	EA480F1-iP1.87	EA480F1-iP2.5
Module Parameter	Pixel Pitch	1.87mm	2.5mm
	Pixel Configuration	SMD1515	SMD2020
	Driving Mode	1/64 duty	1/48 duty
	Module Resolution(Pixel)	128(L) *128(H)	96(L)*96(H)
	Density	284,444pixels/m ²	160,000pixels/m ²
	Module Size(mm)	240(L)*240(H)	240(L)*240(H)
	Module Mask	Pure black mask---high contrast screen	Pure black mask---high contrast screen
	Module Quantity in a Cabinet	2(L) *2(H)	2(L) *2(H)
Cabinet Parameter	Cabinet Dimension(mm)	480(L)*480(H)* 50(D)	480(L)*480(H)* 50(D)
	Cabinet Resolution	256(L) *256(H)	192(L) *192(H)
	Cabinet Material	Die-cast aluminum	Die-cast aluminum
	Cabinet Weight	≈5.5KG	≈5.5KG
	Protection Grade	IP35	IP35
Electricity Parameter	Brightness	300~800 cd/m ²	300~800 cd/m ²
	Viewing Angle	140°(Horizontal); 140°(Vertical)	140°(Horizontal); 140°(Vertical)
	Best Viewing Distance	≥1.87m	≥2.5m
	Max. Power Consumption	≤400W/m ²	≤400W/m ²
	Avg. Power Consumption	100~180W/m ²	100~180W/m ²
	Screen Refresh Frequency	≥2880~3840Hz	≥2880~3840Hz
	Frame Frequency	≥60Hz	≥60Hz
	Gray Grade	14 bits	14 bits
	Display Color	4.4 trillion colors	4.4 trillion colors
	Brightness Adjustment	100 grades by software or automatically by sensor	100 grades by software or automatically by sensor
	Operation Power	AC100-240V 50-60Hz Switchable	AC100-240V 50-60Hz Switchable
	Input Signal	Composite Video, S-video, DVI, HDMI, SDI, HD-SDI	Composite Video, S-video, DVI, HDMI, SDI, HD-SDI
	Control Distance	100M (Ethernet cable);20KM (Optical fiber cable)	100M (Ethernet cable);20KM (Optical fiber cable)
	Support VGA Mode	800*600, 1024*768, 1280*1024, 1600*1200	800*600, 1024*768, 1280*1024, 1600*1200
	Color Temperature	2000—9500 adjustable	2000—9500 adjustable
	Brightness Correction	Pixel by pixel, module by module, cabinet by cabinet	Pixel by pixel, module by module, cabinet by cabinet
	Working Temperature	-10 ~ +60 °C	-10 ~ +60 °C
	Storage Temperature	-30 ~ +70 °C	-30 ~ +70 °C
	Working Humidity	10% ~ 90% RH	10% ~ 90% RH
	Lifetime	100,000 hours	100,000 hours
	MTBF	>10,000 hours	>10,000 hours
	Continuous Operating Time	≥72 hours	≥72 hours
	Out-of-Control Pixel Rate	≤0.01%	≤0.01%

EagerLED Leading LED Display Manufacturer



Whatsapp

+86 152 2013 3050



Website

eagerled.com



Youtube

@EagerLED



Tiktok

@eagerleddisplay