



EA250W

Indoor Wallpaper Front Service LED Display

Feature:

1. Structure free installation, directly mount on wall;
2. Aluminum lightweight cabinet;
3. Thin and light size, exquisite cabinet;
4. Full front service, saving installation space;
5. High contrast for unrivaled visual performance



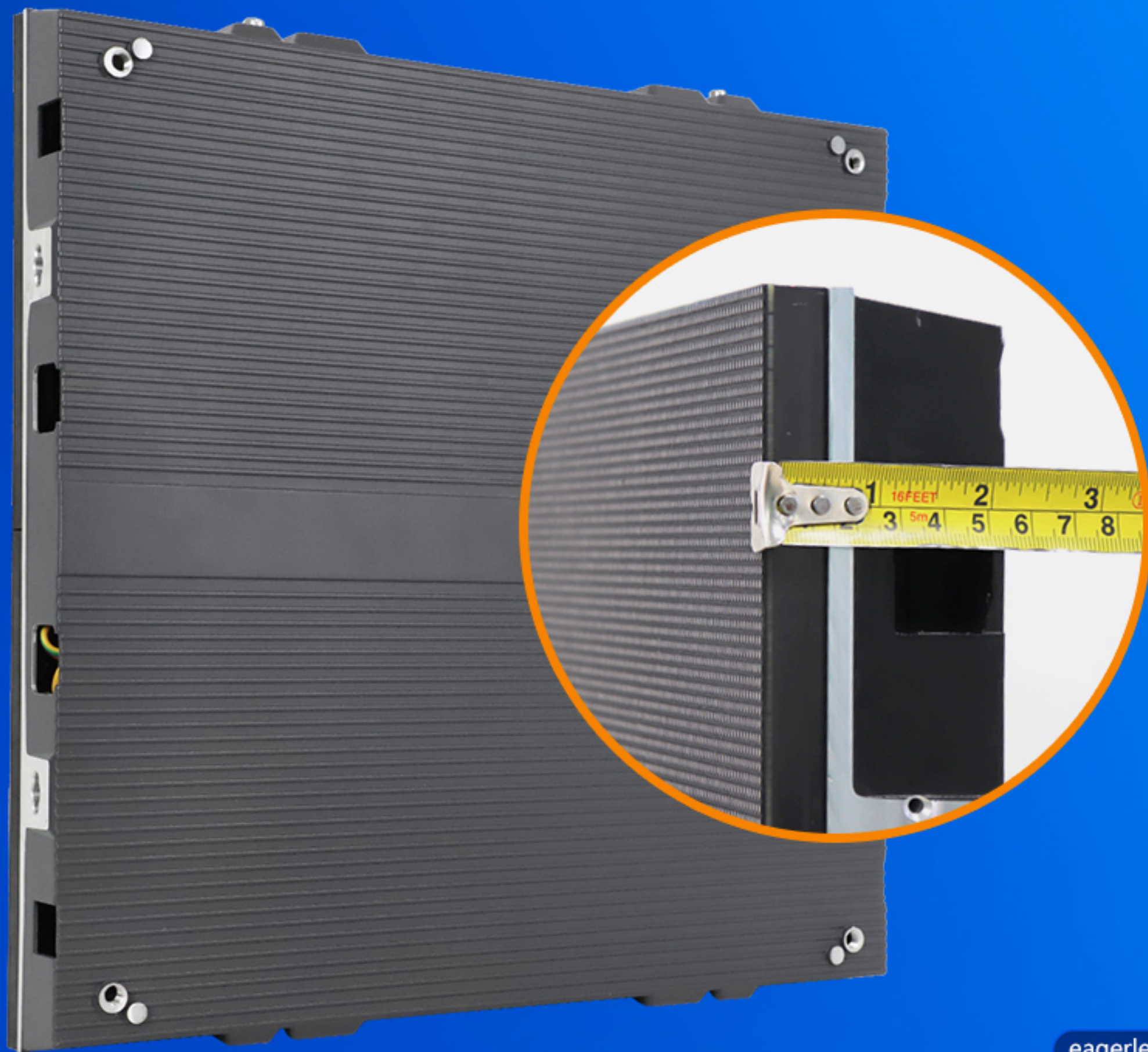
Front Service

Full front service design,
saving installation space



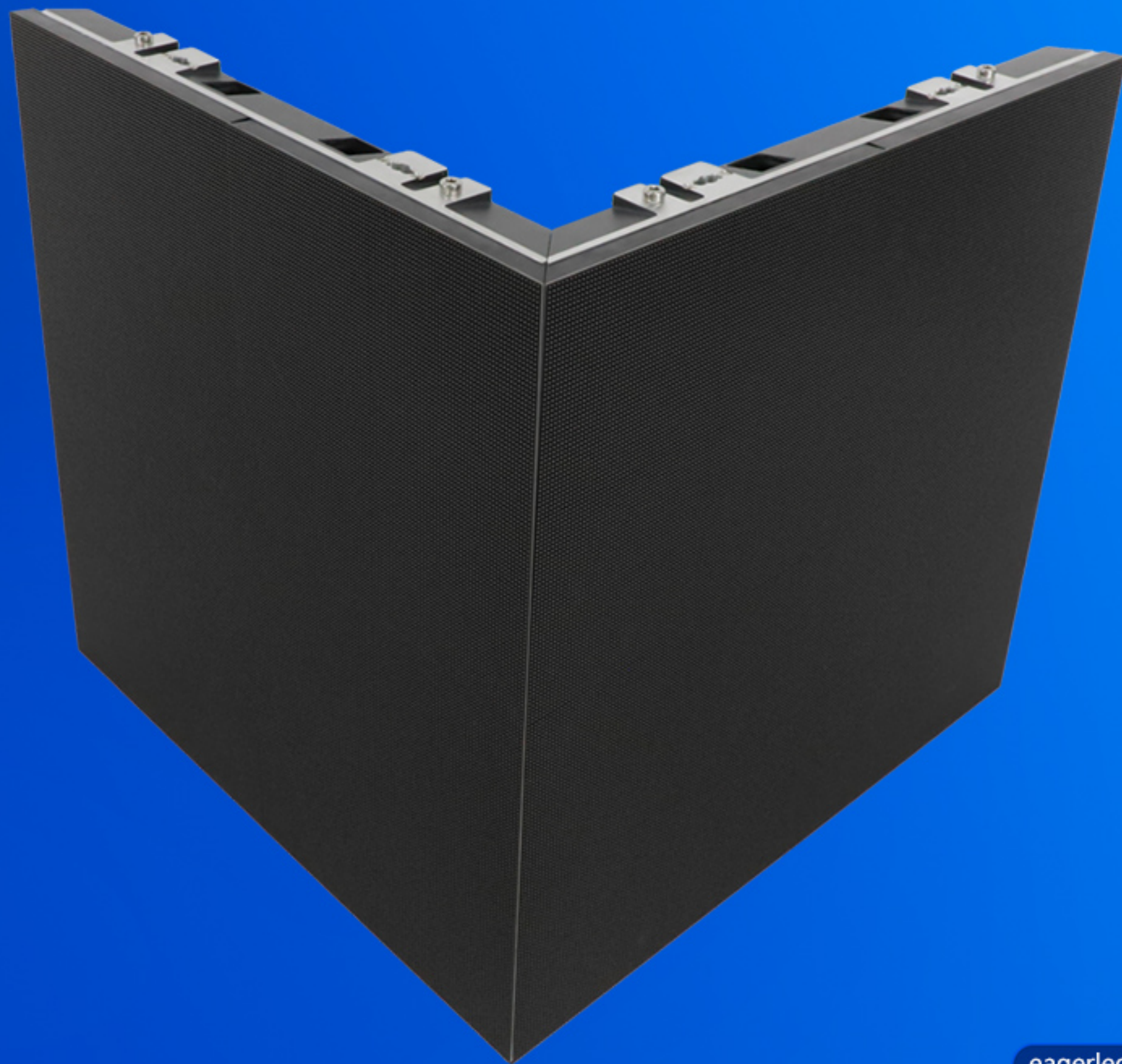
Slim and Light

Ultra-thin cabinet, the thickness is only 54mm.



Beveled Cabinet

Splicing 90 degree, suitable
for columns and corners.
(optional)



Superb Display Effect

INDOOR WALLPAPER FRONT SERVICE LED DISPLAY

INDOOR WALLPAPER FRONT SERVICE LED DISPLAY

High contrast
High refresh rate



Low contrast
Low refresh rate



VS

EagerLED EA250W

Competing Product

Wide Viewing Angle

140° wide viewing angle allows you to get more vision



Installation Method

INDOOR WALLPAPER FRONT SERVICE LED DISPLAY



Stacking installation

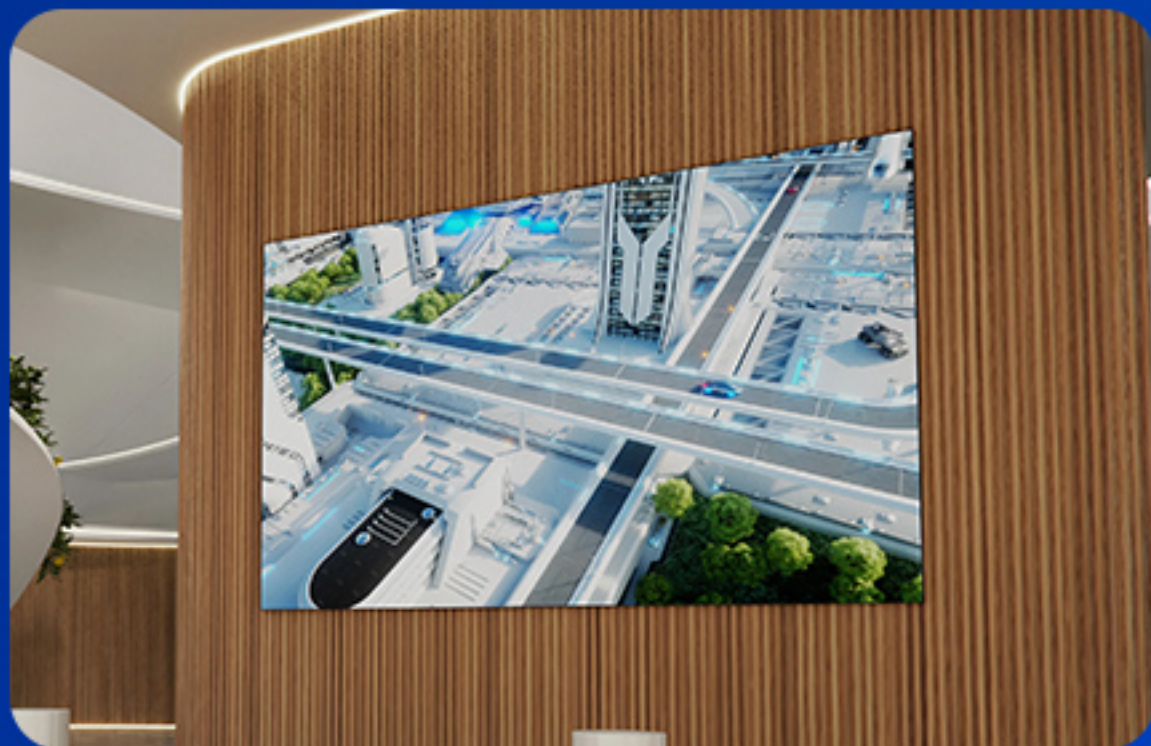


Wall installation

INDOOR WALLPAPER FRONT SERVICE LED DISPLAY

Multiple Applications

INDOOR WALLPAPER FRONT SERVICE LED DISPLAY



INDOOR WALLPAPER FRONT SERVICE LED DISPLAY



Packing Method

(Refer to the packaging method)

Cabinet size(mm)	500*500(L*H)
Packing Quantity	12pcs/carton
Package Size(mm)	1060*612*790(L*H*D)



EagerLED EA250W Indoor Wallpaper Front Service Parameter

	Mode	EA250W-iP1.95	EA250W-iP2.6	EA250W-iP2.97	EA250W-iP3.91	EA250W-iP4.81
Module Parameter	Pixel Pitch	1.95mm	2.6mm	2.97mm	3.91mm	4.81mm
	Pixel Configuration	SMD1515	SMD1515	SMD2020	SMD2020	SMD2020
	Driving Mode	1/32 duty	1/32 duty	1/28 duty	1/16 duty	1/13 duty
	Module Resolution(Pixel)	128(L) * 128(H)	96(L) * 96(H)	84(L) * 84(H)	64(L) * 64(H)	52(L) * 52(H)
	Density	262,144pixels/m ²	145,456pixels/m ²	112,896pixels/m ²	65,536pixels/m ²	43,264pixels/m ²
	Module Size(mm)	250(L) * 250(H)				
	Module Mask	Pure black mask---high contrast screen				
	Module Quantity in a Cabinet	2(L) * 2(H)				
Cabinet Parameter	Cabinet Dimension(mm)	500(L) * 500(H) * 60(D)				
	Cabinet Material	Die-cast aluminum				
	Cabinet Weight	≈6KG				
	Protection Grade	IP31				
	Cabinet Resolution	256(L) * 256(H)	192(L) * 192(H)	168(L) * 168(H)	128(L) * 128(H)	104(L) * 104(H)
Electricity Parameter	Brightness(cd/m ²)	800	750	800	800	700
	Best Viewing Distance	≥1.95m	≥2.6m	≥2.97m	≥3.91m	≥4.81m
	Max. Power Consumption	480W/m ²	480W/m ²	480W/m ²	576W/m ²	560W/m ²
	Avg. Power Consumption	160W/m ²	160W/m ²	160W/m ²	192W/m ²	190W/m ²
	Screen Refresh Frequency	3840Hz	3840Hz	3840Hz	1920Hz / 3840Hz	1920Hz / 3840Hz
	Frame Frequency	≥60Hz				
	Gray Grade	14 bits				
	Viewing Angle	140°(Horizontal); 140°(Vertical)				
	Display Color	4.4 trillion colors				
	Brightness Adjustment	100 grades by software or automatically by sensor				
	Operation Power	AC100-240V 50-60Hz Switchable				
	Input Signal	Composite Video, S-video, DVI, HDMI, SDI, HD-SDI				
	Control Distance	100M (Ethernet cable); 20KM (Optical fiber cable)				
	Support VGA Mode	800*600, 1024*768, 1280*1024, 1600*1200				
	Color Temperature	2000—9500 adjustable				
	Brightness Correction	Pixel by pixel, module by module, cabinet by cabinet				
	Working Temperature	-10 ~ +60 °C				
	Storage Temperature	-30 ~ +70 °C				
	Working Humidity	10% ~ 90% RH				
	Lifetime	100,000 hours				
MTBF	>10,000 hours					
Continuous Operating Time	≥72 hours					
Out-of-Control Pixel Rate	≤0.01%					

EagerLED Leading LED Display Manufacturer



Whatsapp
+86 152 2013 3050



Website
eagerled.com



Youtube
@EagerLED



Tiktok
@eagerleddisplay