

640X360MM INDOOR HD LED DISPLAY

640X360MM INDOOR HD LED DISPLAY

Alpha Beta Project

Aerospace
Tech

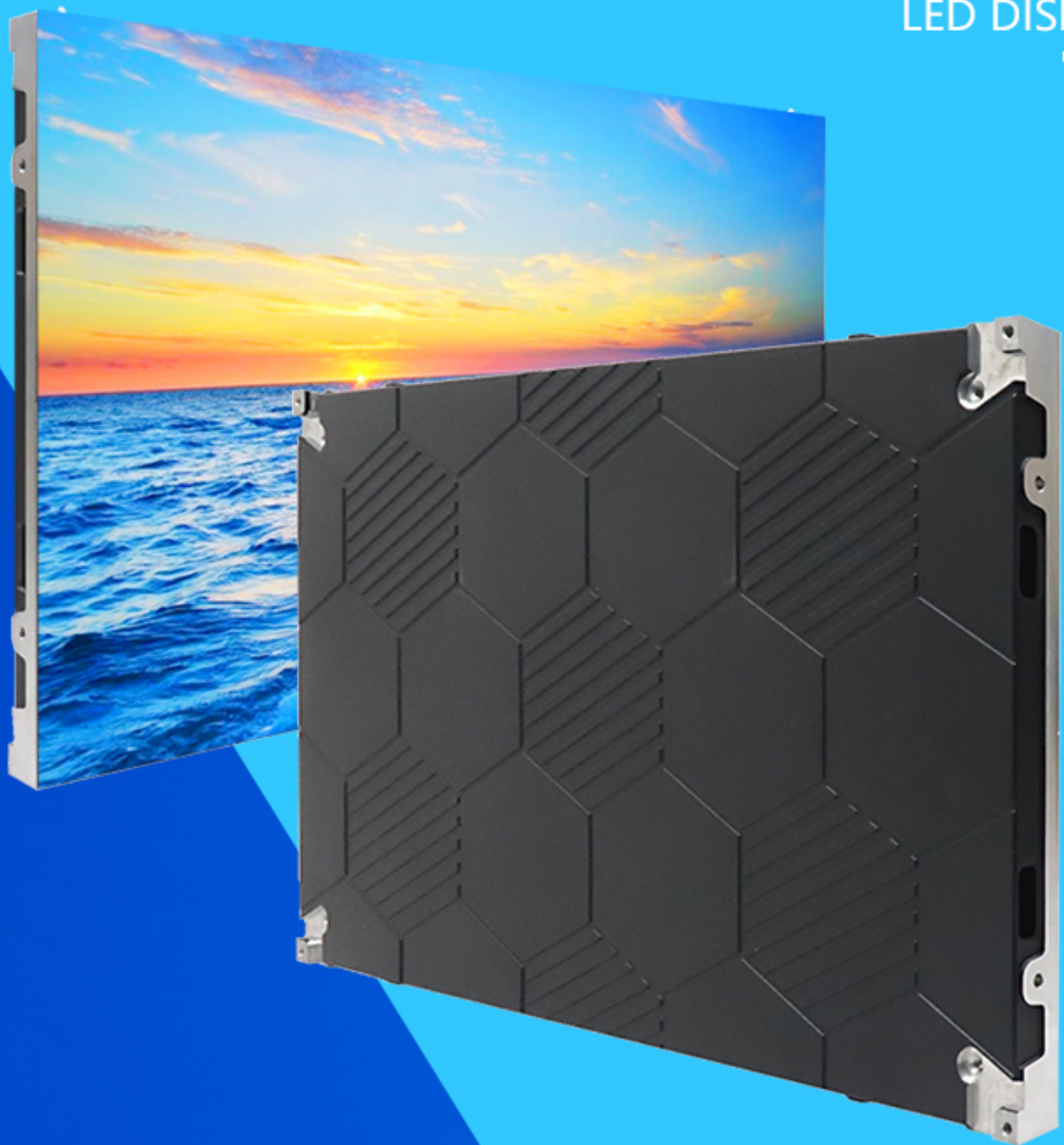
EA169F2

640x360mm Indoor HD LED Display

Space tourism could take off
sooner than expected.

Feature:

1. 16:9 ratio design, lightweight cabinet
2. Realize standard 2K, 4K, 8K resolution
3. Full front desk service, saving installation space
4. No cable connection between modules and cabinets
5. High contrast for unrivaled visual performance

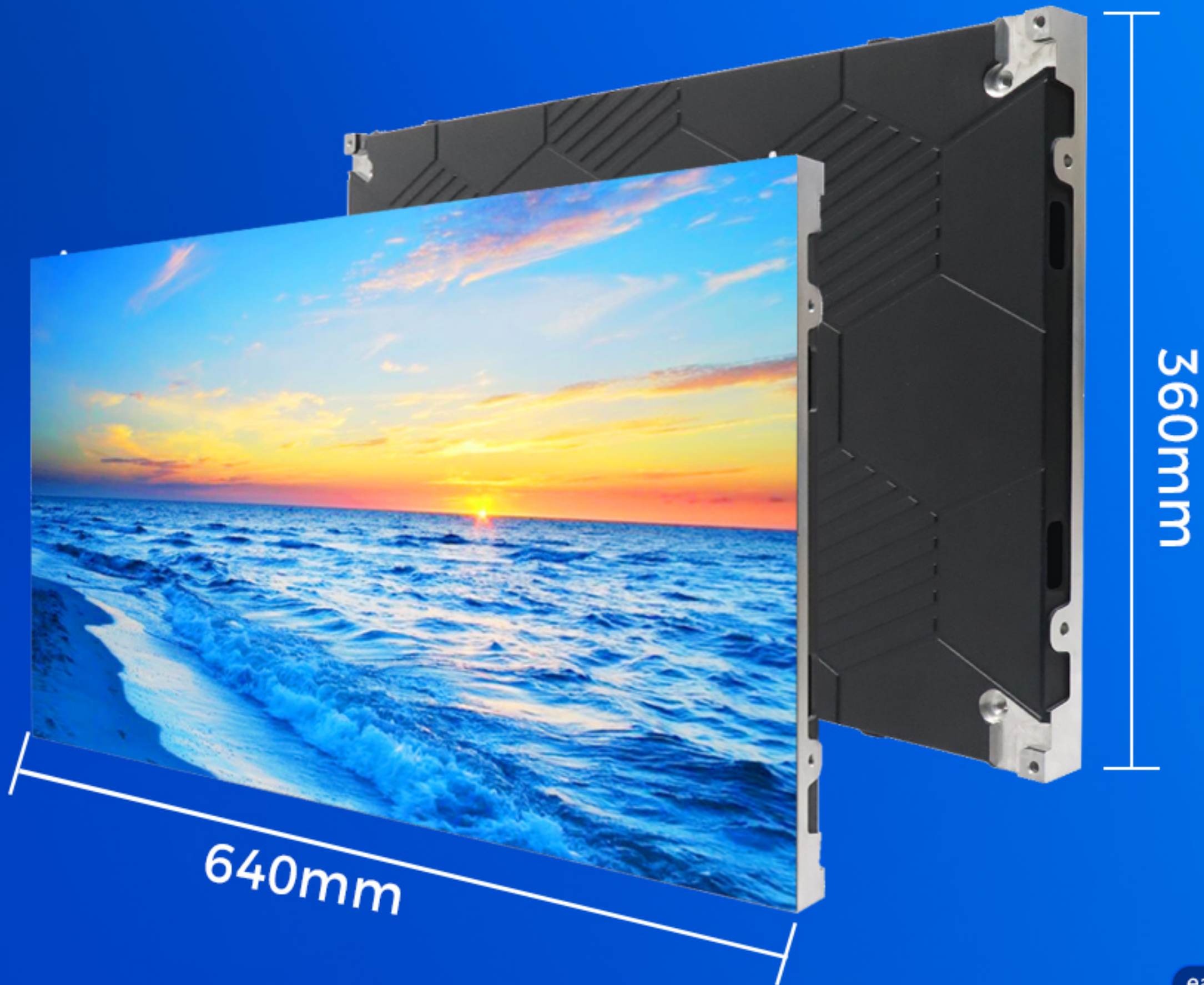


640X360MM INDOOR HD LED DISPLAY

640X360MM INDOOR HD LED DISPLAY

16:9 Ratio

640*360mm size,
16:9 golden ratio



640X360MM INDOOR HD LED DISPLAY

640X360MM INDOOR HD LED DISPLAY

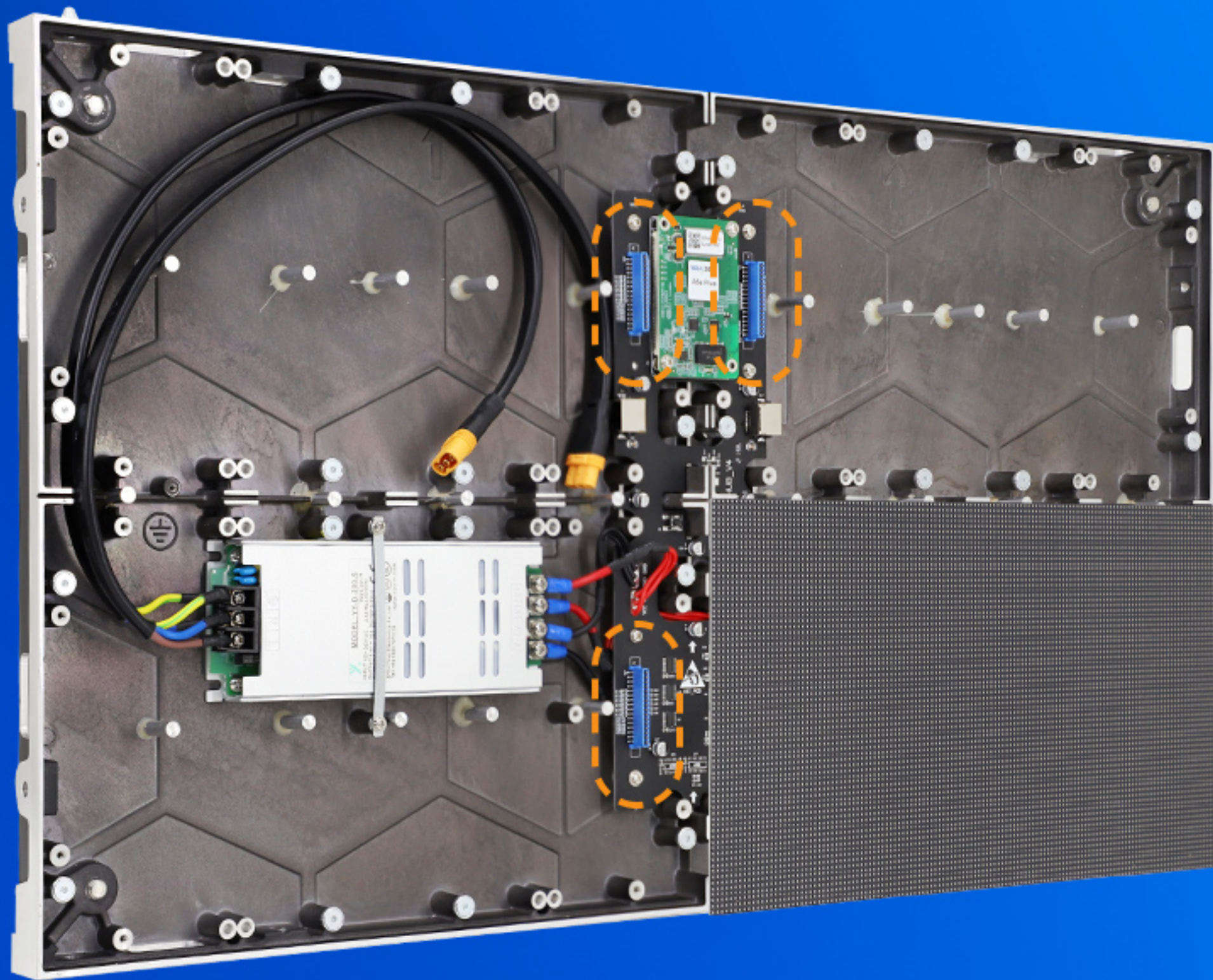
Front Service

Full front service design,
saving installation space



Wireless Connection

No cable connection between
LED modules and cabinets



UHD 8K

Realize standard 2K, 4K,
8K resolution, HD
experience



Superb Display Effect

High contrast
3840Hz high refresh rate

Low contrast
Low refresh rate

VS

EagerLED EA169F2

Competing Product

Wide Viewing Angle

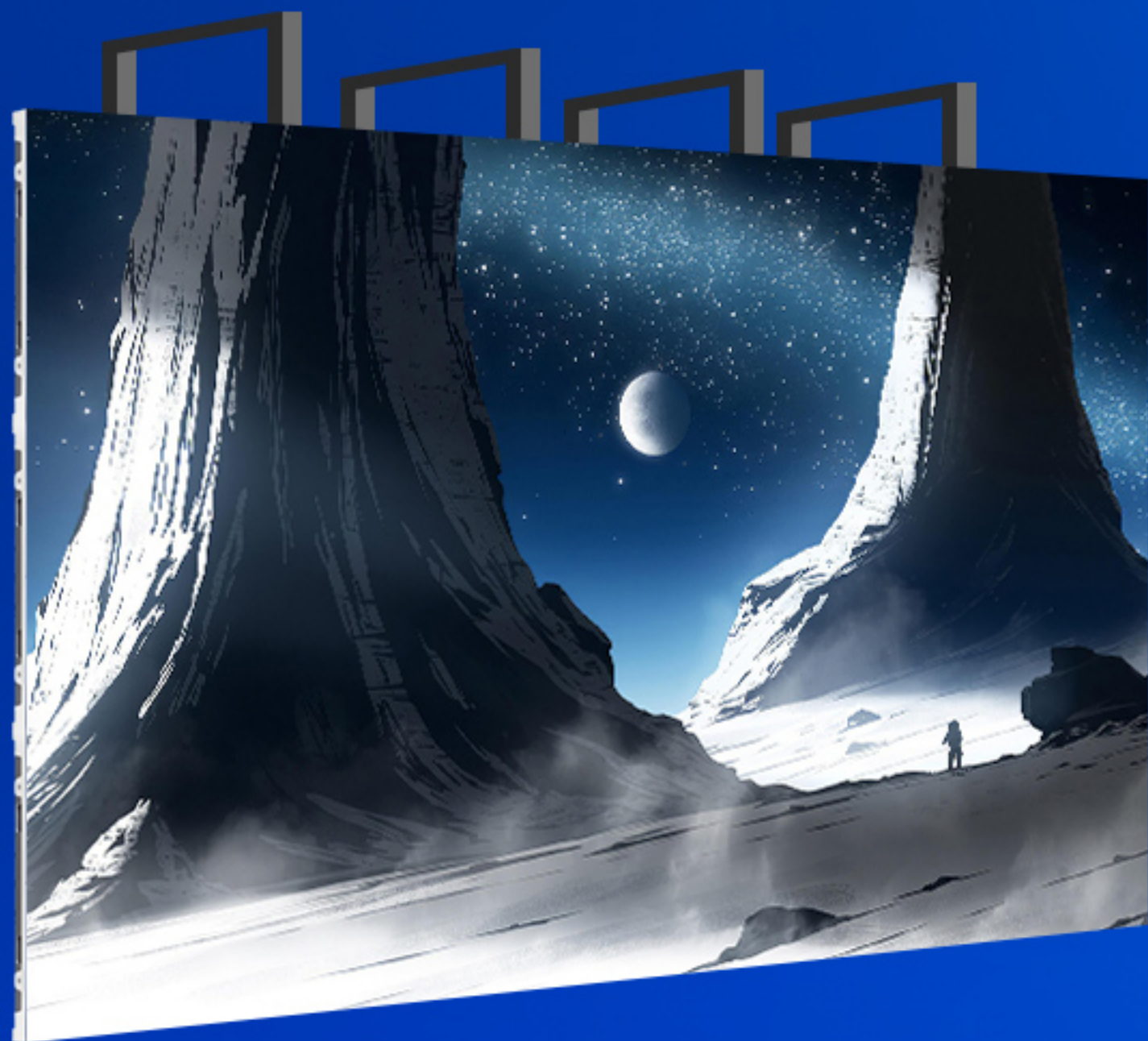
140° wide viewing angle allows you to get more vision



140°
VIEWING ANGLE

Installation Method

640X360MM INDOOR HD LED DISPLAY



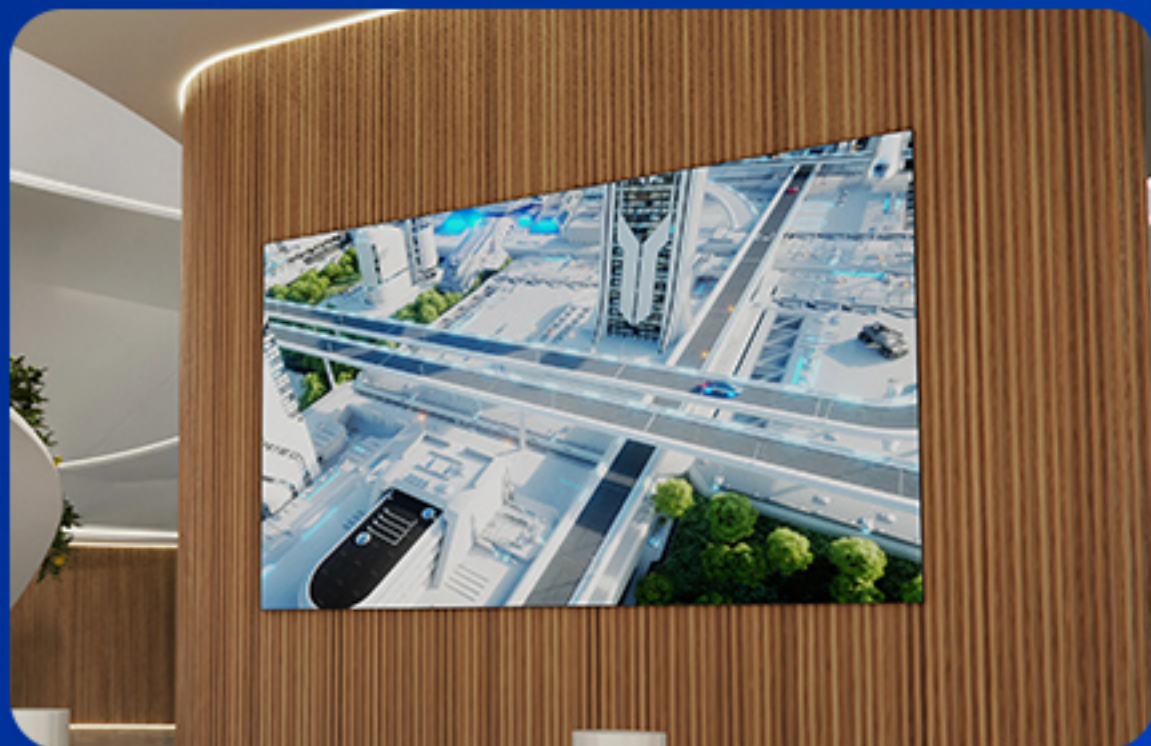
Stacking installation



Wall installation

640X360MM INDOOR HD LED DISPLAY

Multiple Applications



640X360MM INDOOR HD LED DISPLAY

640X360MM INDOOR HD LED DISPLAY

Packing Method

(Refer to the packaging method)

640X360MM INDOOR HD LED DISPLAY

640X360MM INDOOR HD LED DISPLAY

Cabinet size(mm)	640*360(L*H)
Packing Quantity	9pcs/carton
Package Size(mm)	660*546*868(L*H*D)



Eagerled EA169F2 Indoor HD LED Display Parameter

	Mode	EA169F2-iP1.25	EA169F2-iP1.53	EA169F2-iP1.86
Module Parameter	Pixel Pitch	1.25mm	1.53mm	1.86mm
	Pixel Configuration	SMD1010	SMD1010	SMD1515
	Driving Mode	1/60 duty	1/60 duty	1/64 duty
	Module Resolution(Pixel)	256(L) *144(H)	208(L) *118(H)	172(L) *96(H)
	Density	640,000pixels/m ²	418,889pixels/m ²	286,667pixels/m ²
	Module Size(mm)	320(L) * 180(H)	320(L) * 180(H)	320(L) * 180(H)
	Module Mask	Pure black mask---high contrast screen	Pure black mask---high contrast screen	Pure black mask---high contrast screen
	Module Quantity in a Cabinet	2(L) * 2(H)	2(L) * 2(H)	2(L) * 2(H)
Cabinet Parameter	Cabinet Dimension(mm)	640(L) * 360(H) * 32(D)	640(L) * 360(H) * 32(D)	640(L) * 360(H) * 32(D)
	Cabinet Resolution	512(L) * 288(H)	416(L) * 236(H)	344(L) *192(H)
	Cabinet Material	Die-cast aluminum	Die-cast aluminum	Die-cast aluminum
	Cabinet Weight	≈5.1KG	≈5.1KG	≈5.1KG
	Protection Grade	IP31	IP31	IP31
Electricity Parameter	Brightness	300~800 cd/m ²	300~800 cd/m ²	300~800 cd/m ²
	Viewing Angle	140°(Horizontal); 140°(Vertical)	140°(Horizontal); 140°(Vertical)	140°(Horizontal); 140°(Vertical)
	Best Viewing Distance	≥1.25m	≥1.53m	≥1.86m
	Max. Power Consumption	≤500W/m ²	≤500W/m ²	≤00W/m ²
	Avg. Power Consumption	100~300W/m ²	100~300W/m ²	100~300W/m ²
	Screen Refresh Frequency	≥3840Hz	≥3840Hz	≥3840Hz
	Frame Frequency	≥60Hz	≥60Hz	≥60Hz
	Gray Grade	14 bits	14 bits	14 bits
	Display Color	4.4 trillion colors	4.4 trillion colors	4.4 trillion colors
	Brightness Adjustment	100 grades by software or automatically by sensor	100 grades by software or automatically by sensor	100 grades by software or automatically by sensor
	Operation Power	AC100-240V 50-60Hz Switchable	AC100-240V 50-60Hz Switchable	AC100-240V 50-60Hz Switchable
	Input Signal	Composite Video, S-video, DVI, HDMI, SDI, HD-SDI	Composite Video, S-video, DVI, HDMI, SDI, HD-SDI	Composite Video, S-video, DVI, HDMI, SDI, HD-SDI
	Control Distance	100M (Ethernet cable);20KM (Optical fiber cable)	100M (Ethernet cable);20KM (Optical fiber cable)	100M (Ethernet cable);20KM (Optical fiber cable)
	Support VGA Mode	800*600, 1024*768, 1280*1024, 1600*1200	800*600, 1024*768, 1280*1024, 1600*1200	800*600, 1024*768, 1280*1024, 1600*1200
	Color Temperature	2000—9500 adjustable	2000—9500 adjustable	2000—9500 adjustable
	Brightness Correction	Pixel by pixel, module by module, cabinet by cabinet	Pixel by pixel, module by module, cabinet by cabinet	Pixel by pixel, module by module, cabinet by cabinet
	Working Temperature	-10 ~ +60 °C	-10 ~ +60 °C	-10 ~ +60 °C
	Storage Temperature	-30 ~ +70 °C	-30 ~ +70 °C	-30 ~ +70 °C
	Working Humidity	10% ~ 90% RH	10% ~ 90% RH	10% ~ 90% RH
	Lifetime	100,000 hours	100,000 hours	100,000 hours
	MTBF	>10,000 hours	>10,000 hours	>10,000 hours
	Continuous Operating Time	≥72 hours	≥72 hours	≥72 hours
Out-of-Control Pixel Rate	≤0.01%	≤0.01%	≤0.01%	

EagerLED Leading LED Display Manufacturer



Whatsapp

+86 152 2013 3050



Website

eagerled.com



Youtube

[@EagerLED](https://www.youtube.com/@EagerLED)



Tiktok

[@eagerleddisplay](https://www.tiktok.com/@eagerleddisplay)