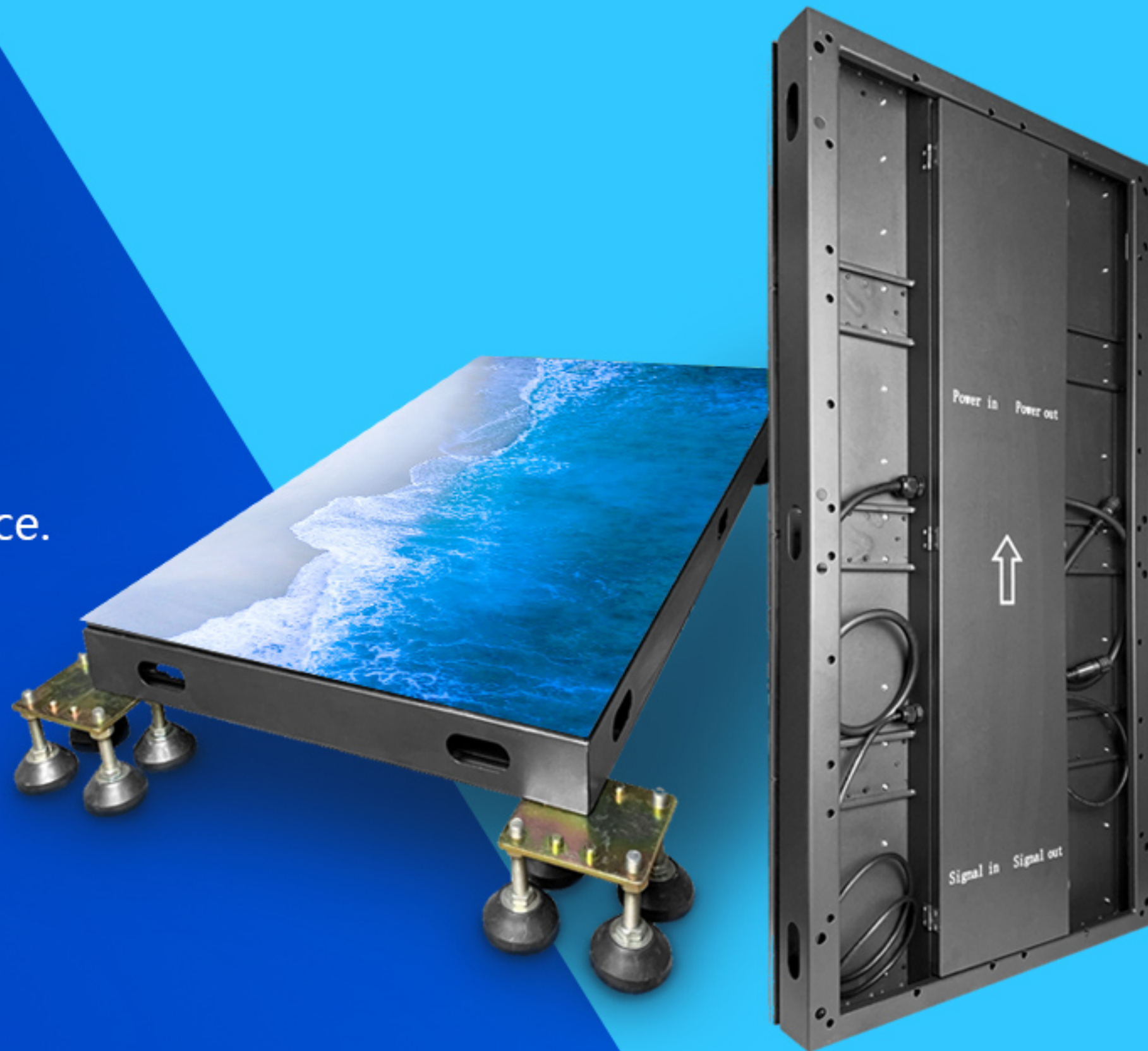


EA-iFloor

Indoor 500x1000mm Floor LED Display

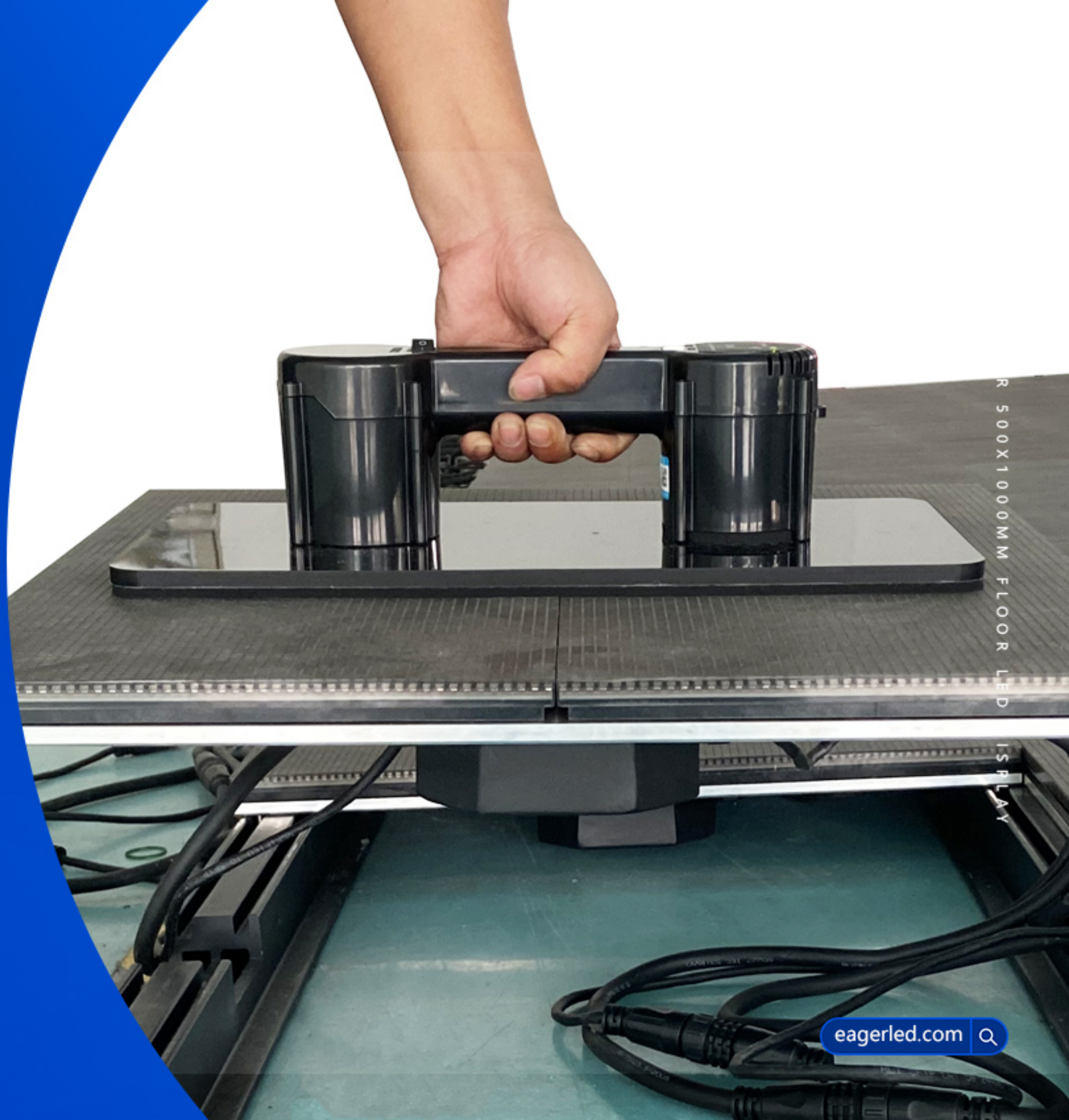
Feature:

1. Patented technology mask with high contrast;
2. Use magnetic suction tools for front maintenance.
3. IP66 dustproof and waterproof;
4. Super strong load-bearing performance;
5. Easy installation, wide application.



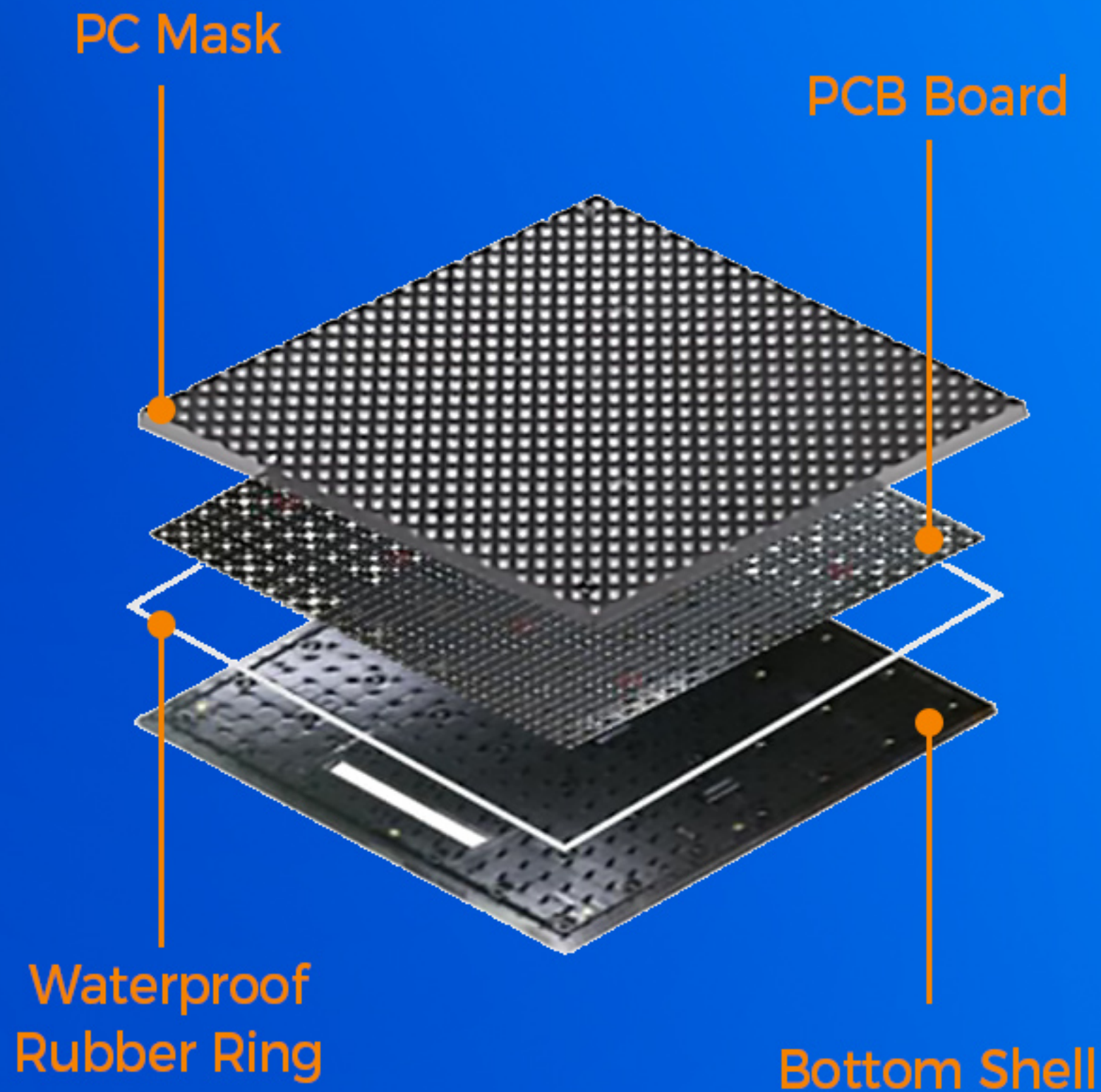
Front Service

Use magnetic suction tools for front maintenance.



Module with Anti-scratch Mask

Patented mask,
multi-layer protection.



Super Load-bearing

The load on the LED panel
exceeds 2,000KG/m².

**HIGH LOAD
BEARING**



Patented Appearance

The back cover can be opened for easy maintenance.

CABINET DESIGN



Superb Display Effect

INDOOR 500X1000MM FLOOR LED DISPLAY

INDOOR 500X1000MM FLOOR LED DISPLAY

3000:1 high contrast ratio
2500CD/m² high brightness

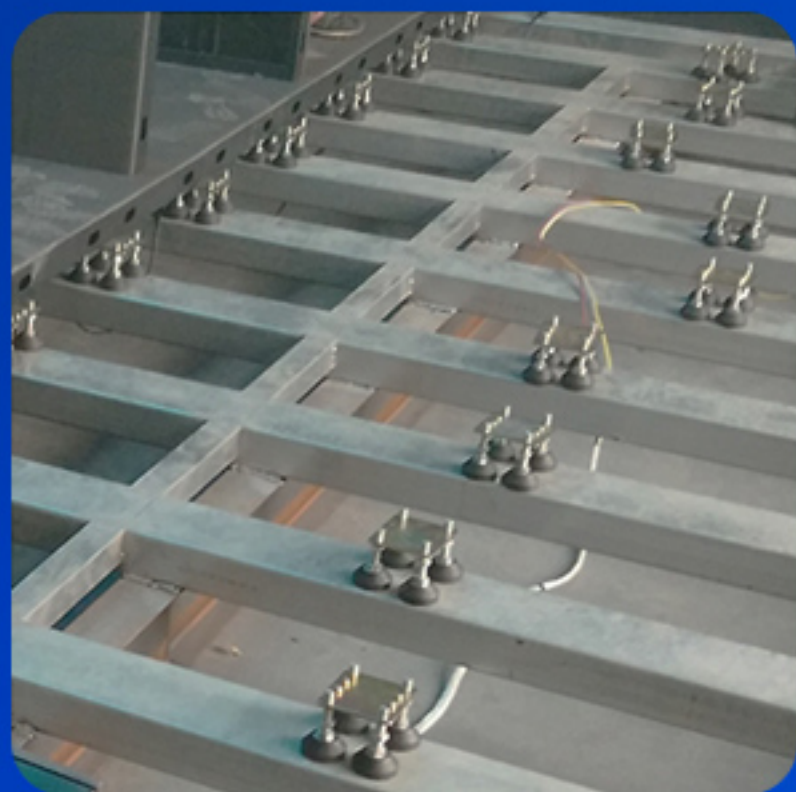
Installation Method

INDOOR 500X1000MM FLOOR LED DISPLAY

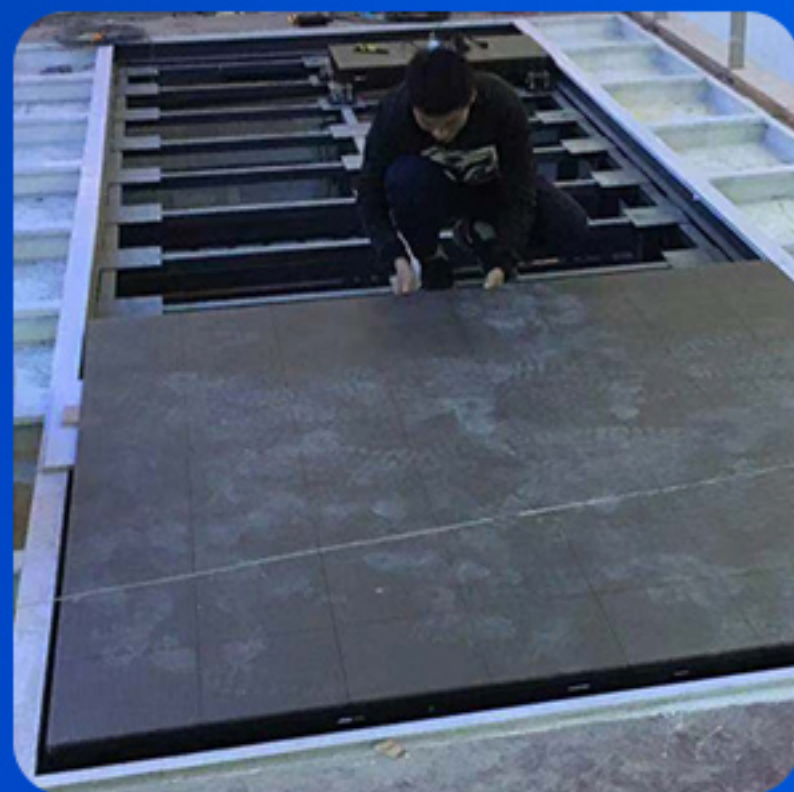
INDOOR 500X1000MM FLOOR LED DISPLAY



1
Steel Structure



2
Supporting Feet
Installation



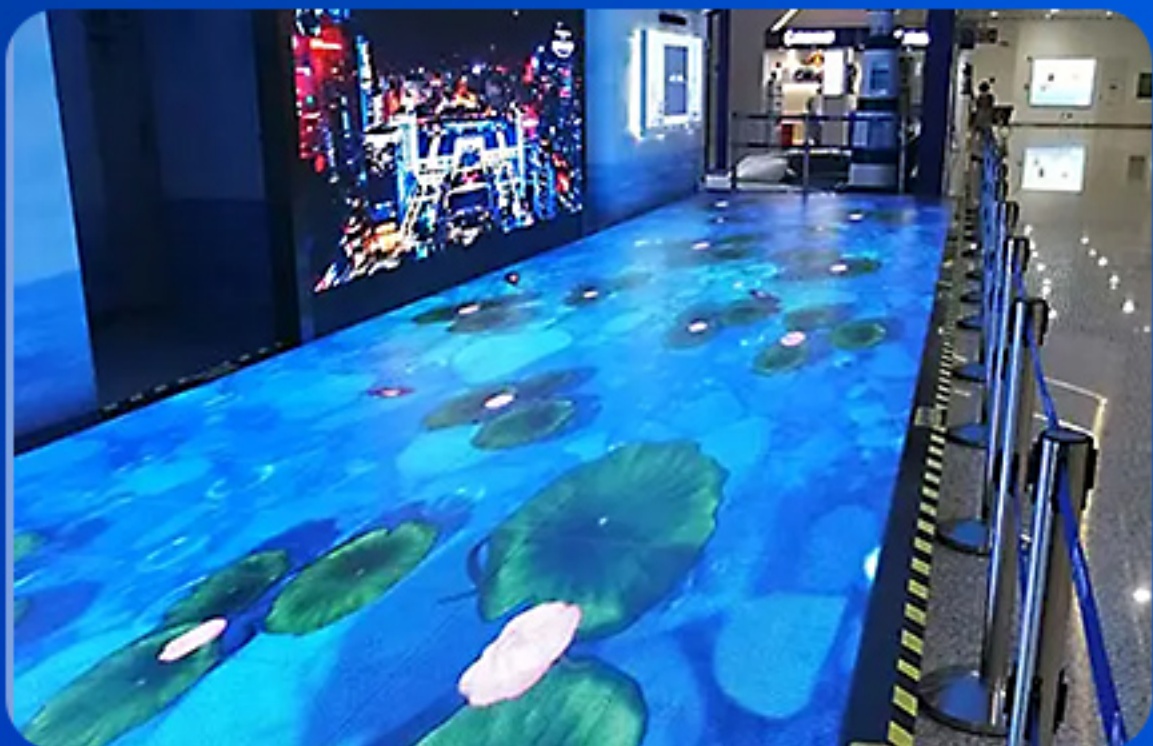
3
Cabinet installation



4
LED Screen Test

Multiple Applications

INDOOR 500X1000MM FLOOR LED DISPLAY



INDOOR 500X1000MM FLOOR LED DISPLAY



Packing Method

(Refer to the packaging method)

Cabinet size(mm)	500*1000(L*H)
Packing Quantity	6pcs/carton
Package Size(mm)	1060*600*710(L*H*D)



EagerLED EA-iFloor Indoor Floor LED Display Parameter

	Mode	EA-iFloor-P2.97	EA-iFloor-P3.91	EA-iFloor-P4.81	EA-iFloor-P5.2	EA-iFloor-6.25
Module Parameter	Pixel Pitch	2.97mm	3.91mm	4.81mm	5.2mm	6.25mm
	Pixel Configuration	SMD1415	SMD1921	SMD1921	SMD1921	SMD1921
	Driving Mode	1/21 duty	1/16 duty	1/13 duty	1/12 duty	1/10 duty
	Module Resolution(Pixel)	84(L) * 84(H)	64(L) * 64(H)	52(L) * 52(H)	48(L) * 48(H)	40(L) * 40(H)
	Module Size(mm)	250(L) * 250(H)	250(L) * 250(H)	250(L) * 250(H)	250(L) * 250(H)	250(L) * 250(H)
	Density	112,896pixels/m ²	65,536pixels/m ²	43,264pixels/m ²	36,864pixels/m ²	25,600pixels/m ²
	Module Mask	Patent mask (PC and composite material)				
	Module Quantity in a Cabinet	2(L) *4(H)	2(L) *4(H)	2(L) *4(H)	2(L) *4(H)	2(L) *4(H)
Cabinet Parameter	Cabinet Dimension(mm)	500(L) * 1000(H) * 80(D)	500(L) * 1000(H) * 80(D)	500(L) * 1000(H) * 80(D)	500(L) * 1000(H) * 80(D)	500(L) * 1000(H) * 80(D)
	Cabinet Resolution	168(L) * 336(H)	128(L) * 256(H)	104(L) * 208(H)	96(L) * 192(H)	80(L) * 160(H)
	Cabinet Material	Steel	Steel	Steel	Steel	Steel
	Cabinet Weight	25KG	25KG	25KG	25KG	25KG
	Protection Grade	IP66(front), IP65(rear)	IP66(front), IP65(rear)	IP66(front), IP65(rear)	IP66(front), IP65(rear)	IP66(front), IP65(rear)
Electricity Parameter	Brightness	2500 cd/m ²	2500 cd/m ²	2500 cd/m ²	2500 cd/m ²	2500 cd/m ²
	Best Viewing Distance	≥2.97m	≥3.91m	≥4.81m	≥5.2m	≥6.25m
	Max. Power Consumption	800W/m ²	800W/m ²	800W/m ²	800W/m ²	800W/m ²
	Avg. Power Consumption	400W/m ²	400W/m ²	400W/m ²	400W/m ²	400W/m ²
	Screen Refresh Frequency	1920Hz				
	Frame Frequency	50Hz -60Hz				
	Viewing Angle	110°(Horizontal); 110°(Vertical)				
	Gray Grade	16 bits				
	Display Color	4.4 trillion colors				
	Brightness Adjustment	100 grades by software or automatically by sensor				
	Operation Power	AC100-240V 50-60Hz Switchable				
	Input Signal	Composite Video, S-video, DVI, HDMI, SDI, HD-SDI				
	Control Distance	100M (Ethernet cable);20KM (Optical fiber cable)				
	Support VGA Mode	800*600, 1024*768, 1280*1024, 1600*1200				
	Color Temperature	5000—9300 adjustable				
	Brightness Correction	Pixel by pixel, module by module, cabinet by cabinet				
	Working Temperature	-20 ~ +60 °C				
	Storage Temperature	-30 ~ +70 °C				
	Working Humidity	10% ~ 90% RH				
	Lifetime	100,000 hours				
MTBF	>10,000 hours					
Continuous Operating Time	≥72 hours					
Out-of-Control Pixel Rate	≤0.01%					

EagerLED Leading LED Display Manufacturer



Whatsapp
+86 152 2013 3050



Website
eagerled.com



Youtube
@EagerLED



Tiktok
@eagerleddisplay