

OUTDOOR 500X1000MM FLOOR LED DISPLAY

OUTDOOR 500X1000MM FLOOR LED DISPLAY

EA-OFloor

Outdoor 500x1000mm Floor LED Display

Feature:

1. P68 protection level on the front and back;
2. Use magnetic suction tools for front maintenance.
3. Super strong load-bearing performance;
4. The LED module has a built-in sensor chip for real-time image sensing.
5. Easy installation, wide application.



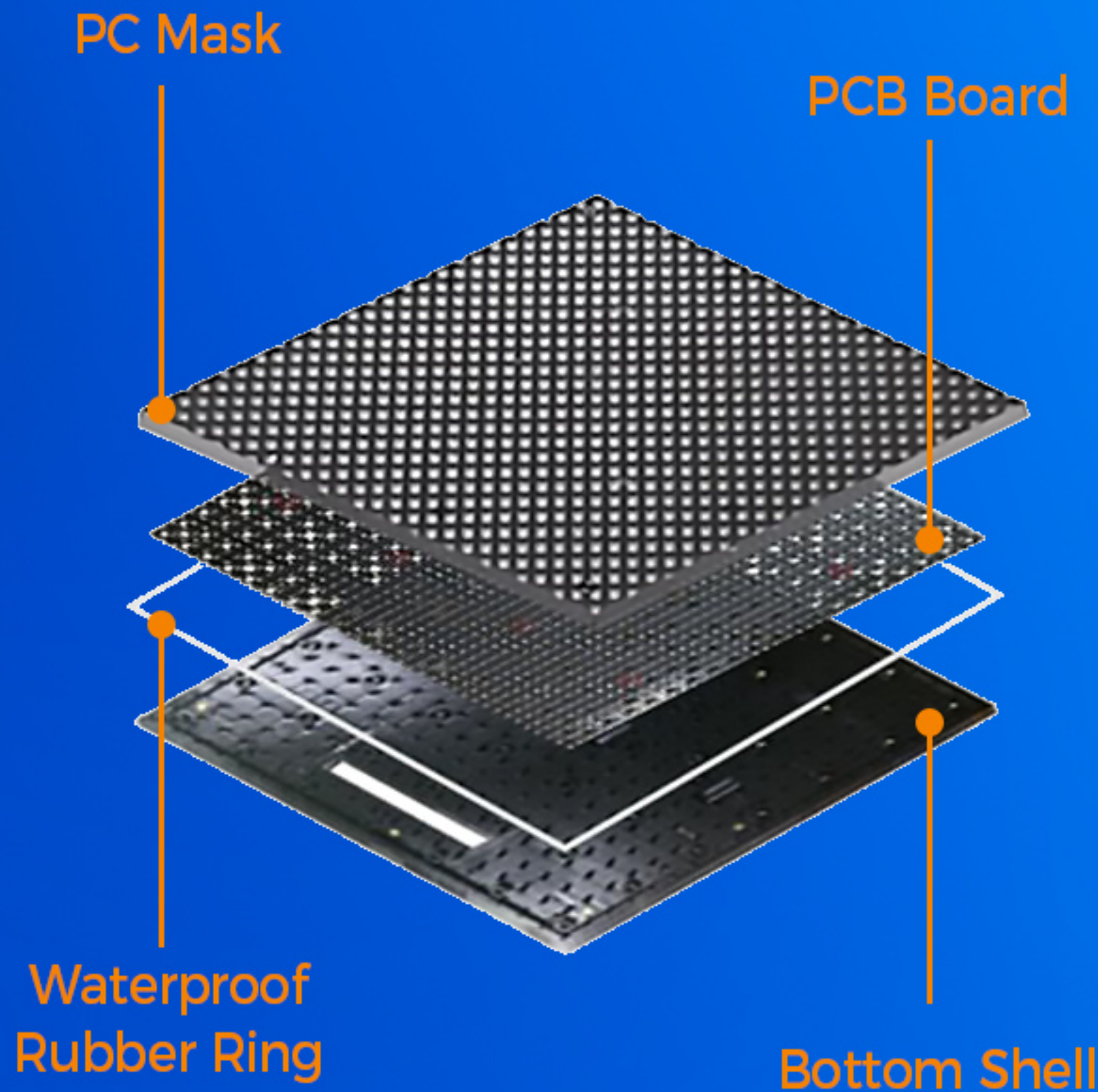
Front Service

Use magnetic suction tools for front maintenance.



Module with Anti-scratch Mask

Patented mask,
multi-layer protection.



**HIGH LOAD
BEARING**

Super Load-bearing

The load on the LED panel
exceeds 1,500KG/m².



OUTDOOR 500X1000MM FLOOR LED DISPLAY

OUTDOOR 500X1000MM FLOOR LED DISPLAY

Interactive Induction

Built-in sensor chip for
real-time interactive
sensing.



IP68 Protection

EA-OFloor LED screen
adopts IP68 protection
on the front and rear.



IP65

Superb Display Effect

OUTDOOR 500X1000MM FLOOR LED DISPLAY

OUTDOOR 500X1000MM FLOOR LED DISPLAY



3000:1 high contrast ratio
3500CD/m² high brightness

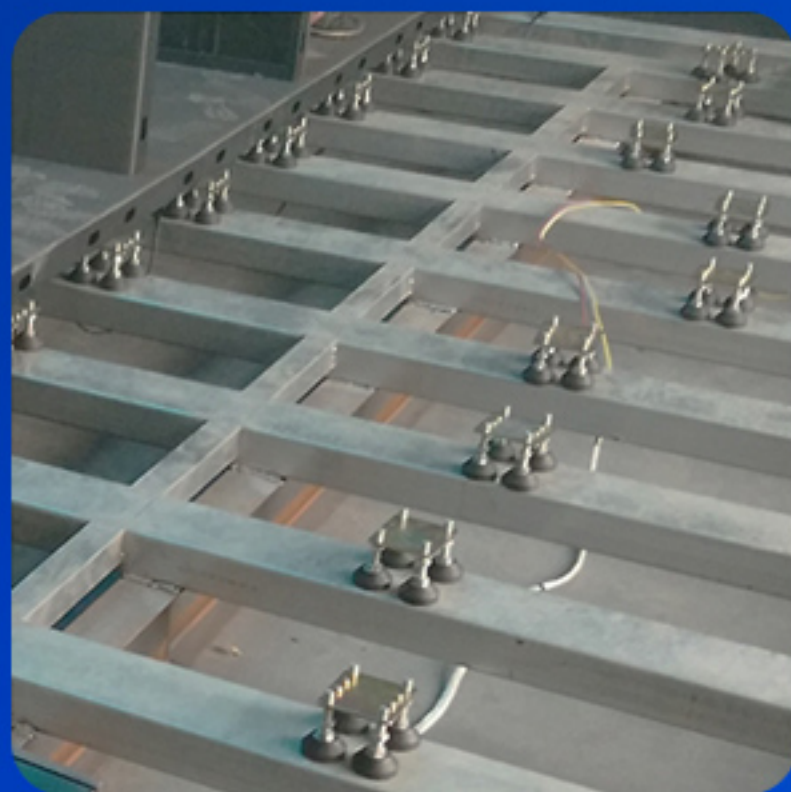
Installation Method

OUTDOOR 500X1000MM FLOOR LED DISPLAY

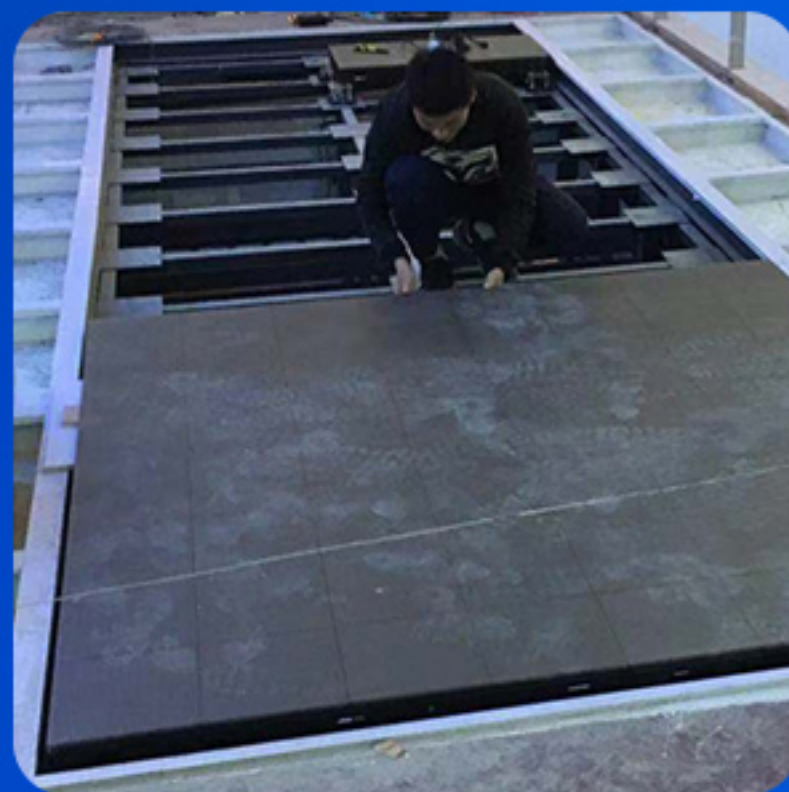
OUTDOOR 500X1000MM FLOOR LED DISPLAY



1
Steel Structure



2
Supporting Feet
Installation



3
Cabinet installation



4
LED Screen Test

Multiple Applications

OUTDOOR 500X1000MM FLOOR LED DISPLAY



OUTDOOR 500X1000MM FLOOR LED DISPLAY



Packing Method

(Refer to the packaging method)

Cabinet size(mm)	500*1000(L*H)
Packing Quantity	6pcs/carton
Package Size(mm)	1060*680*640(L*H*D)



EagerLED EA-OFloor Outdoor Floor LED Display Parameter

	Mode	EA-OFloor-P2.97	EA-OFloor-P3.91	EA-OFloor-P4.81	EA-OFloor-P5.2	EA-OFloor-6.25
Module Parameter	Pixel Pitch	2.97mm	3.91mm	4.81mm	5.2mm	6.25mm
	Pixel Configuration	SMD1415	SMD1921	SMD1921	SMD1921	SMD1921
	Driving Mode	1/21 duty	1/16 duty	1/13 duty	1/12 duty	1/10 duty
	Module Resolution(Pixel)	84(L) * 84(H)	64(L) * 64(H)	52(L) * 52(H)	48(L) * 48(H)	40(L) * 40(H)
	Module Size(mm)	250(L) * 250(H)	250(L) * 250(H)	250(L) * 250(H)	250(L) * 250(H)	250(L) * 250(H)
	Density	112,896pixels/m ²	65,536pixels/m ²	43,264pixels/m ²	36,864pixels/m ²	25,600pixels/m ²
	Module Mask	Patent mask (PC and composite material)				
	Module Quantity in a Cabinet	2(L) *4(H)	2(L) *4(H)	2(L) *4(H)	2(L) *4(H)	2(L) *4(H)
Cabinet Parameter	Cabinet Dimension(mm)	500(L) * 1000(H) * 80(D)	500(L) * 1000(H) * 80(D)	500(L) * 1000(H) * 80(D)	500(L) * 1000(H) * 80(D)	500(L) * 1000(H) * 80(D)
	Cabinet Resolution	168(L) * 336(H)	128(L) * 256(H)	104(L) * 208(H)	96(L) * 192(H)	80(L) * 160(H)
	Cabinet Material	Steel	Steel	Steel	Steel	Steel
	Cabinet Weight	25KG	25KG	25KG	25KG	25KG
	Protection Grade	IP68	IP68	IP68	IP68	IP68
Electricity Parameter	Brightness	3500 cd/m ²	3500 cd/m ²	3500 cd/m ²	3500 cd/m ²	3500 cd/m ²
	Best Viewing Distance	≥2.97m	≥3.91m	≥4.81m	≥5.2m	≥6.25m
	Max. Power Consumption	800W/m ²	800W/m ²	800W/m ²	800W/m ²	800W/m ²
	Avg. Power Consumption	400W/m ²	400W/m ²	400W/m ²	400W/m ²	400W/m ²
	Screen Refresh Frequency	1920Hz				
	Frame Frequency	50Hz -60Hz				
	Viewing Angle	110°(Horizontal); 110°(Vertical)				
	Gray Grade	16 bits				
	Display Color	4.4 trillion colors				
	Brightness Adjustment	100 grades by software or automatically by sensor				
	Operation Power	AC100-240V 50-60Hz Switchable				
	Input Signal	Composite Video, S-video, DVI, HDMI, SDI, HD-SDI				
	Control Distance	100M (Ethernet cable);20KM (Optical fiber cable)				
	Support VGA Mode	800*600, 1024*768, 1280*1024, 1600*1200				
	Color Temperature	5000—9300 adjustable				
	Brightness Correction	Pixel by pixel, module by module, cabinet by cabinet				
	Working Temperature	-20 ~ +60 °C				
	Storage Temperature	-30 ~ +70 °C				
	Working Humidity	10% ~ 90% RH				
	Lifetime	100,000 hours				
MTBF	>10,000 hours					
Continuous Operating Time	≥72 hours					
Out-of-Control Pixel Rate	≤0.01%					

EagerLED Leading LED Display Manufacturer



Whatsapp

+86 153 6103 8665



Website

eagerled.com



Youtube

@EagerLED



Tiktok

@eagerleddisplay