



Shenzhen Eager LED Co.,Ltd. is a professional LED display manufacturer & exporter with 12 years experience in Shenzhen China. Since its foundation, EagerLED has been engaged in full color LED displays for indoor and outdoor use and has become one of the leaders in the field of LED display.

EagerLED has offered many kinds of LED display solutions, such as advertising LED display, rental LED display, front service LED display, flexible LED display, poster LED display, transparent LED display, indoor HD LED display, stadium perimeter LED display and creative LED displays.

EagerLED pays great attention to research and development of LED display products. At present, there are more than 15 experienced engineers in the R&D department, doing their utmost to develop the most advanced LED displays. EagerLED's clients can receive information of new products and technologies every now and then.

EagerLED focuses on overseas market since its establishment. Until now, its LED displays have been used in more than 90 countries and areas, especially the countries and areas from Europe, North America, South America and Middle East.

EagerLED would like to establish long-term and mutually beneficial relations with customers and believe that customers are the most important resources of any enterprise.

SHENZHEN EAGER LED CO., LTD.

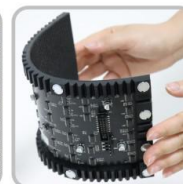
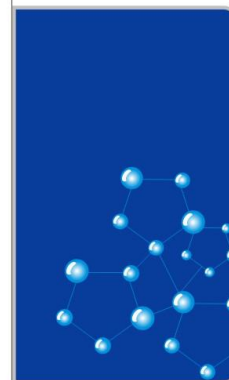
Tel: +86-755-23190947

Mob/Whatsapp/Wechat: +86-152-2013-3050

E-mail: manager@eagerled.com

Website: <https://www.eagerled.com>

Address: Building C, Zhongyu High-Tech Industrial Park, Heshuikou, Matian, Guangming, Shenzhen, China 518106



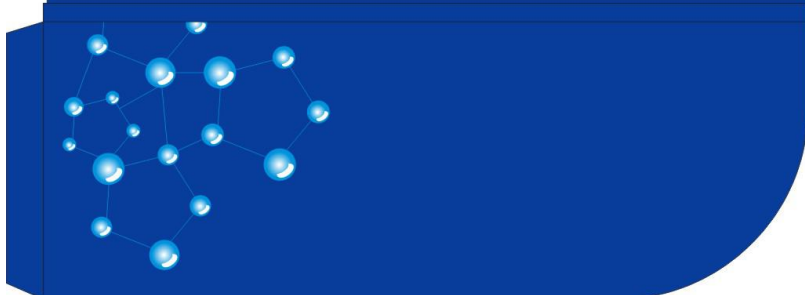
SHENZHEN EAGER LED CO., LTD

PROFESSIONAL

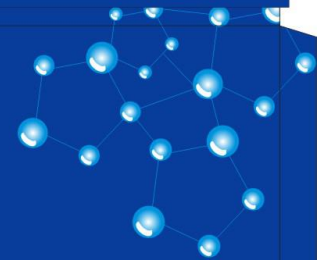
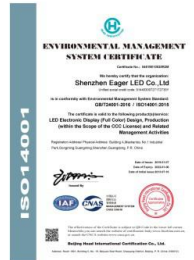
LED DISPLAY

MANUFACTURER & EXPORTER

<https://www.eagerled.com>



Company Certification





SHENZHEN EAGER LED CO., LTD.



Tel: +86-755-23190947

Mob/Whatsapp/Wechat: +86-152-2013-3050

E-mail: manager@eagerled.com

Website: <https://www.eagerled.com>

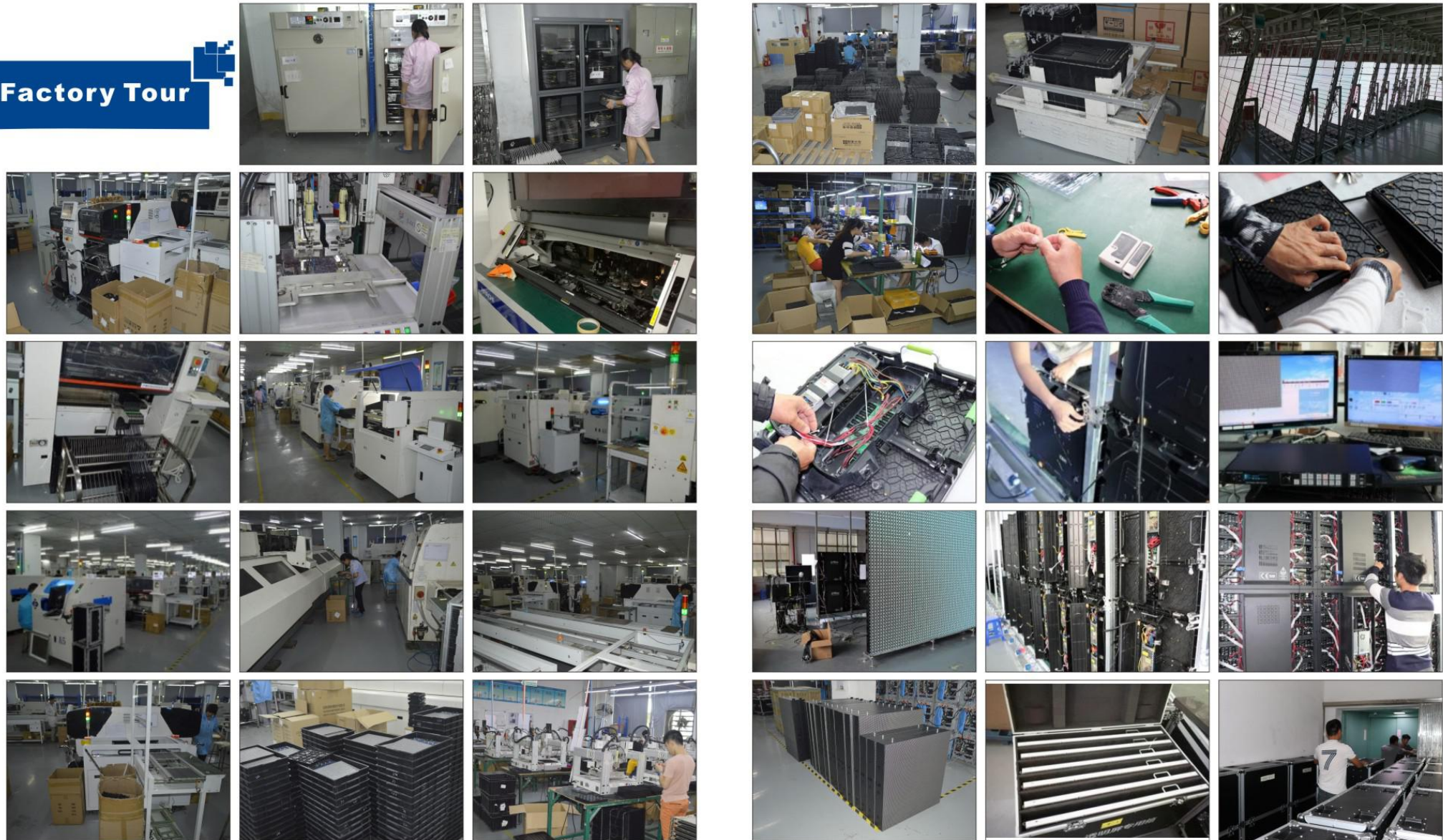
Address: Building C, Zhongyu High-Tech Industrial Park, Heshuikou, Matian, Guangming, Shenzhen, China 518106



Customer Visiting

SHENZHEN EAGER LED CO., LTD

Factory Tour



PARAMETERS

Outdoor 960x960mm Die-cast Stadium Perimeter LED Display				
Pixel Pitch (mm)	P6.67	P8	P10 (2S)	P10 (4S)
Pixel Configuration	SMD3535	SMD3535	SMD3535	SMD3535
Density (Pixels/m ²)	22,478	15,625	10,000	10,000
Module Resolution (Pixels)	48x24	40x20	32x16	32x16
Module Size (mm)	320x160	320x160	320x160	320x160
Driving Mode (Duty)	1/6	1/5	1/2	1/4
Cabinet Size (mm)	960x960	960x960	960x960	960x960
Cabinet Weight (KG)	28.5	28.5	28.5	28.5
Brightness (CD/m ²)	≥6,500	≥6,500	≥7,500	≥6,000
Viewing Angle (°)	120	120	120	120
Gray Grade (Bits)	14	14	14	14
Operation Power	AC100-240V 50-60Hz	AC100-240V 50-60Hz	AC100-240V 50-60Hz	AC100-240V 50-60Hz
Max. Power Consumption (W/m ²)	892	600	850	540
Avg. Power Consumption (W/m ²)	298	200	285	180
Frame Frequency	≥60	≥60	≥60	≥60
Refresh Frequency (Hz)	≥3,840	≥3,840	≥3,840	≥3,840
Working Temperature (°C)	-20~+60	-20~+60	-20~+60	-20~+60
Lifetime (Hours)	100,000	100,000	100,000	100,000
Protection Grade	IP65(front) IP54(rear)	IP65(front) IP54(rear)	IP65(front) IP54(rear)	IP65(front) IP54(rear)



Stadium Perimeter LED Display

People also call it as banner LED display. It is installed around the stadiums(football, basketball, volleyball, tennis, etc.) for advertising use. With its high brightness, vivid image and easy programming, it is popular for stadium advertisement.

SHENZHEN EAGER LED CO., LTD.



Tel: +86-755-23190947

Mob/Whatsapp/Wechat: +86-152-2013-3050

E-mail: manager@eagerled.com

Website: <https://www.eagerled.com>

Address: Building C, Zhongyu High-Tech Industrial Park, Heshuikou, Matian, Guangming, Shenzhen, China 518106

SHENZHEN EAGER LED CO., LTD

FEATURES

- ①) Protect players from getting hurt with soft module mask and soft pillow.
- ②) Adjustable bracket with 7 degrees, meeting all requirements of viewing angle.
- ③) Precise die-cast magnesium cabinet, ultralight and rustproof.
- ④) 3840+ Hz refresh rate, ensuring no flicker or scanning lines under camera.



Handle



Power Con



Signal Con



Fast Lock



Door Key

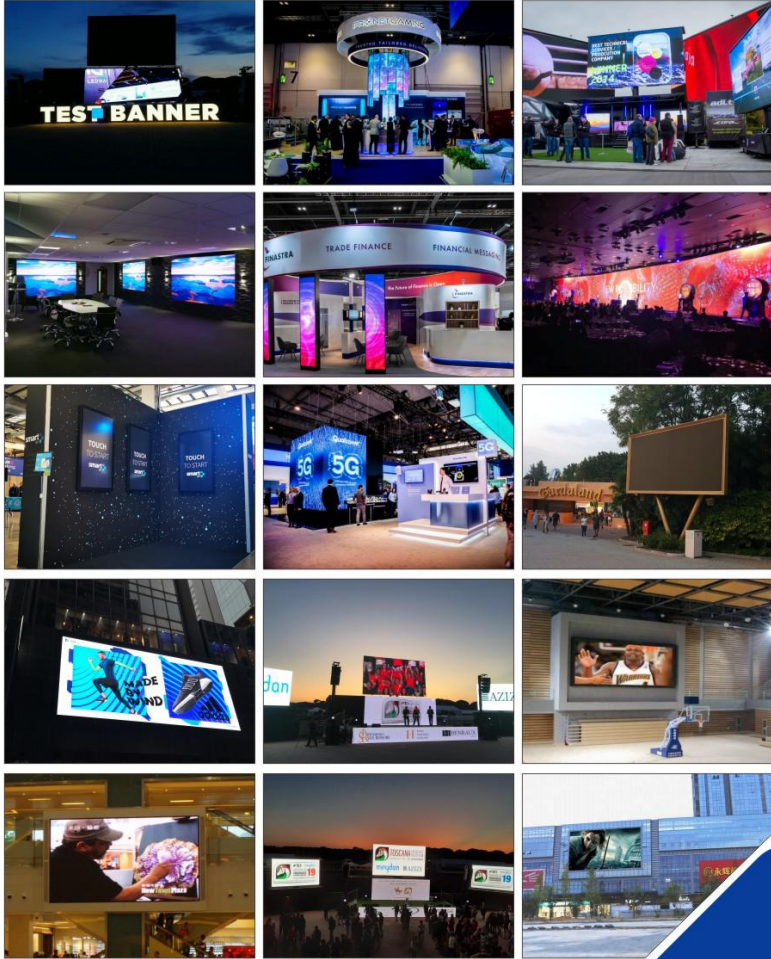


Support Bracket

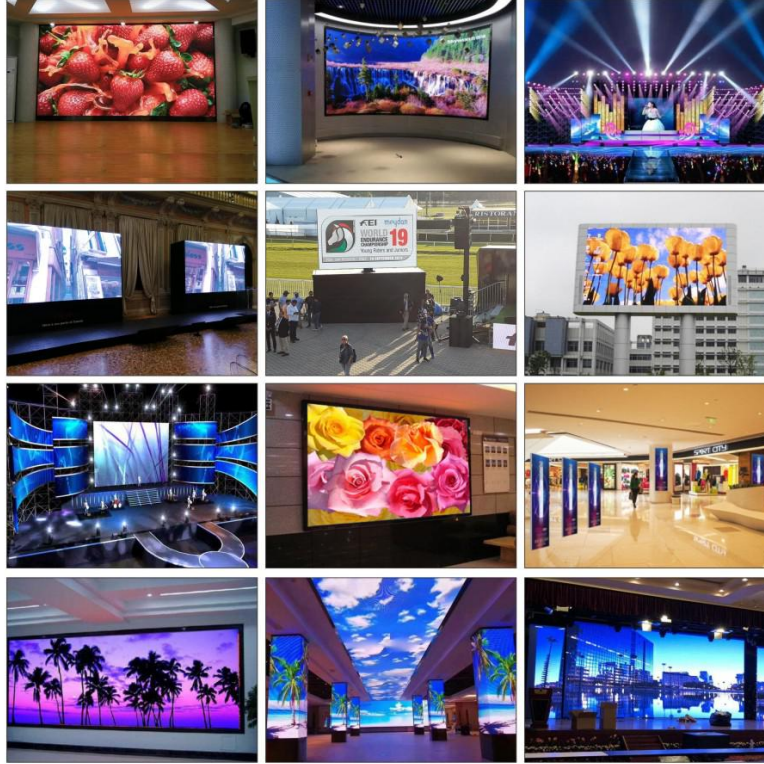
Applications



Case Gallery



Case Gallery



SHENZHEN EAGER LED CO., LTD.

Tel: +86-755-23190947

Mob/Whatsapp/Wechat: +86-152-2013-3050

E-mail: manager@eagerled.com

Website: <https://www.eagerled.com>

Address: Building C, Zhongyu High-Tech Industrial Park, Heshuikou, Matian, Guangming, Shenzhen, China 518106

EAGER LED
亿格创
LED DISPLAY

EAGER LED
亿格创



Case Gallery

SHENZHEN EAGER LED CO., LTD

