



Shenzhen Eager LED Co.,Ltd. is a professional LED display manufacturer & exporter with 12 years experience in Shenzhen China. Since its foundation, EagerLED has been engaged in full color LED displays for indoor and outdoor use and has become one of the leaders in the field of LED display.

EagerLED has offered many kinds of LED display solutions, such as advertising LED display, rental LED display, front service LED display, flexible LED display, poster LED display, transparent LED display, indoor HD LED display, stadium perimeter LED display and creative LED displays.

EagerLED pays great attention to research and development of LED display products. At present, there are more than 15 experienced engineers in the R&D department, doing their utmost to develop the most advanced LED displays. EagerLED's clients can receive information of new products and technologies every now and then.

EagerLED focuses on overseas market since its establishment. Until now, its LED displays have been used in more than 90 countries and areas, especially the countries and areas from Europe, North America, South America and Middle East.

EagerLED would like to establish long-term and mutually beneficial relations with customers and believe that customers are the most important resources of any enterprise.

SHENZHEN EAGER LED CO., LTD.

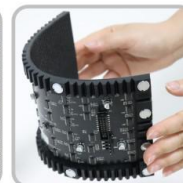
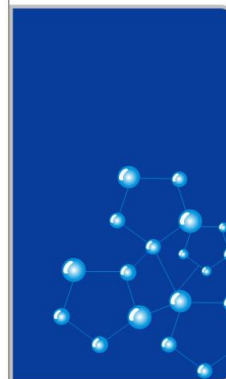
Tel: +86-755-23190947

Mob/Whatsapp/Wechat: +86-152-2013-3050

E-mail: manager@eagerled.com

Website: <https://www.eagerled.com>

Address: Building C, Zhongyu High-Tech Industrial Park, Heshuikou, Matian, Guangming, Shenzhen, China 518106



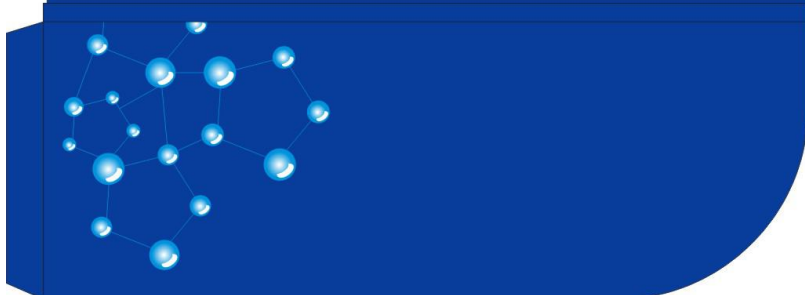
SHENZHEN EAGER LED CO., LTD

PROFESSIONAL

LED DISPLAY

MANUFACTURER & EXPORTER

<https://www.eagerled.com>





SHENZHEN EAGER LED CO., LTD.



Tel: +86-755-23190947

Mob/Whatsapp/Wechat: +86-152-2013-3050

E-mail: manager@eagerled.com

Website: <https://www.eagerled.com>

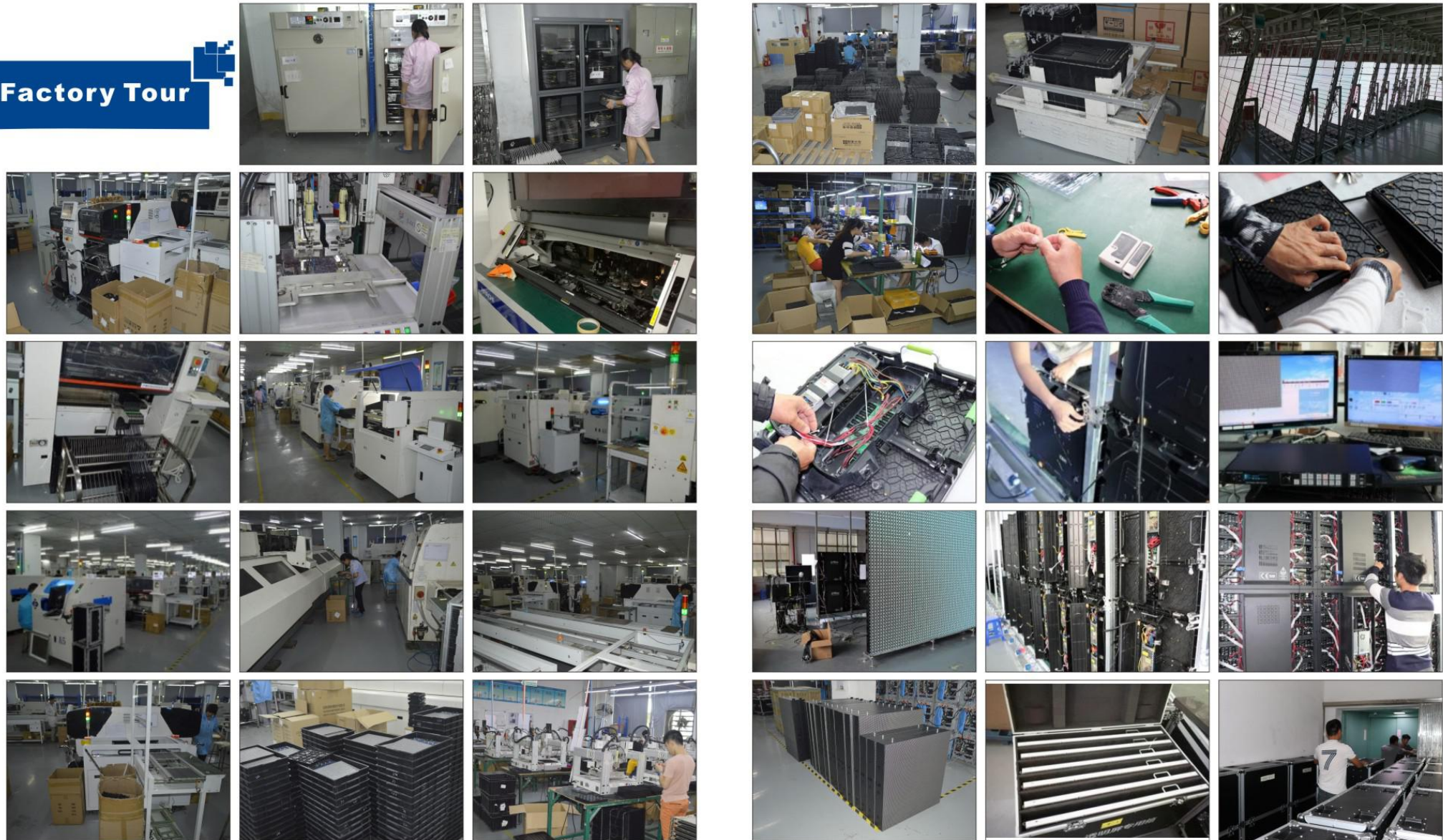
Address: Building C, Zhongyu High-Tech Industrial Park, Heshuikou, Matian, Guangming, Shenzhen, China 518106



Customer Visiting

SHENZHEN EAGER LED CO., LTD

Factory Tour



PARAMETERS

Outdoor Front Service LED Display				
Pixel Pitch (mm)	P6.67	P8	P10	P10
Pixel Configuration	SMD2727	SMD3535	SMD3535	DIP346
Density (Pixels/m)	22,498	15,625	10,000	10,000
Module Resolution (Pixels)	48x48	40x40	32x32	32x32
Module Size (mm)	320x320	320x320	320x320	320x320
Driving Mode (Duty)	1/6	1/4	1/2	1/4
Cabinet Size (mm)	960x960	960x960	960x960	960x960
Cabinet Weight (KG)	40.5	40.5	40.5	50
Brightness (CD/m ²)	≥6,000	≥6,500	≥6,500	≥8,000
Viewing Angle (°)	120	120	120	110
Gray Grade (Bits)	14	14	14	14
Operation Power	AC100-240V 50-60Hz	AC100-240V 50-60Hz	AC100-240V 50-60Hz	AC100-240V 50-60Hz
Max. Power Consumption (W/m ²)	700	762	576	610
Avg. Power Consumption (W/m ²)	230	255	200	205
Frame Frequency (Hz)	≥60	≥60	≥60	≥60
Refresh Frequency (Hz)	≥3,840	≥3,840	≥3,840	≥3,840
Working Temperature (°C)	-20~+60	-20~+60	-20~+60	-20~+60
Lifetime (Hours)	100,000	100,000	100,000	100,000
Protection Grade	IP65(front) IP54(rear)	IP65(front) IP54(rear)	IP65(front) IP54(rear)	IP65(front) IP54(rear)



Outdoor Front Service LED Display

Sometimes there is not enough space behind the LED display after the installation. Our outdoor front service LED display solves this problem for outdoor projects. People can install or disassemble one 320x320mm panel with a hexagonal screwdriver in seconds. And all other parts, like power supply, controller and cables, can be front service. It is full front service solution.

SHENZHEN EAGER LED CO., LTD

SHENZHEN EAGER LED CO., LTD.

EAGER LED
亿格创
LED DISPLAY

Tel: +86-755-23190947

Mob/Whatsapp/Wechat: +86-152-2013-3050

E-mail: manager@eagerled.com

Website: <https://www.eagerled.com>

Address: Building C, Zhongyu High-Tech Industrial Park, Heshuikou, Matian, Guangming, Shenzhen, China
518106



FEATURES

- Full front service for all panels, controllers, power supplies and cables.
- Quick front service, can install or disassemble one panel in seconds.
- Cabinet is customized on size and shape, fit almost all your specific projects.
- Support many control methods, like WIFI, Ethernet, USB and cloud platform.



Applications



Rubber Stopper



Power supply



Positioning Column



Cooling fan



Controller



Power terminal



Insert hexagonal screwdriver into the hole.

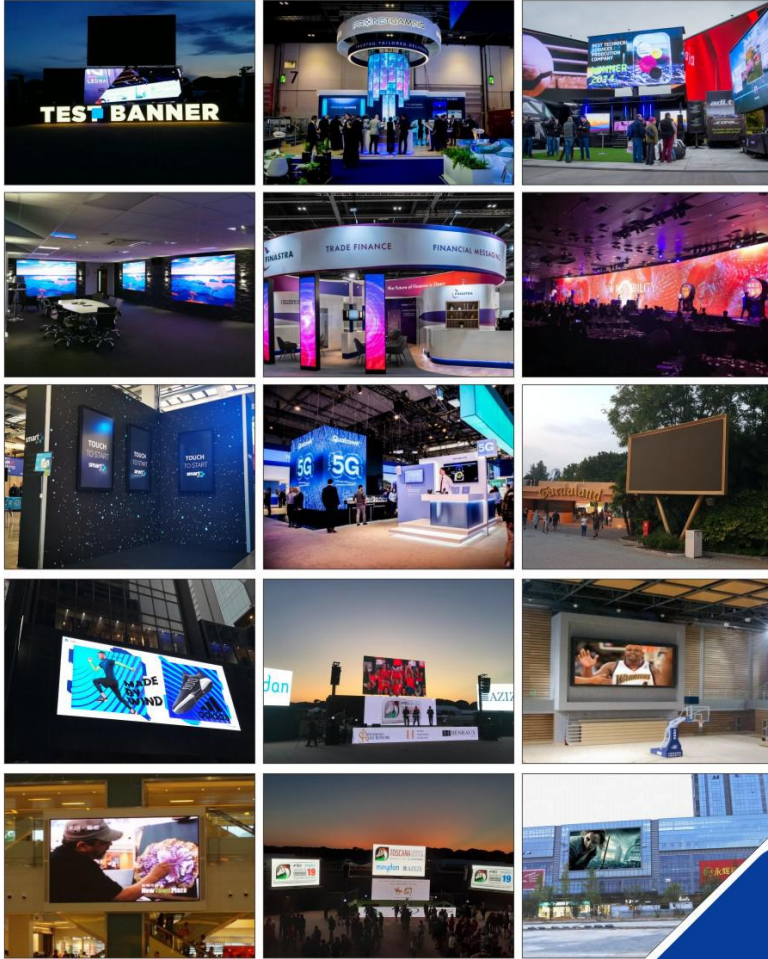


Turn left to loosen the latch.

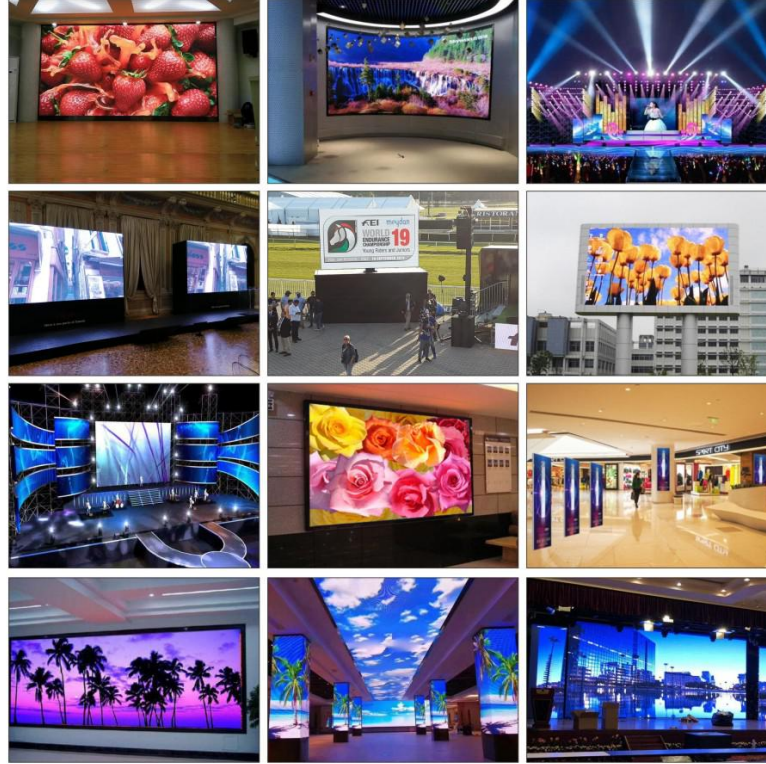


Loosen the second latch and take the panel out.

Case Gallery



Case Gallery



SHENZHEN EAGER LED CO., LTD.

EAGER LED
亿格创
LED DISPLAY

Tel: +86-755-23190947

Mob/Whatsapp/Wechat: +86-152-2013-3050

E-mail: manager@eagerled.com

Website: <https://www.eagerled.com>

Address: Building C, Zhongyu High-Tech Industrial Park, Heshuikou, Matian, Guangming, Shenzhen, China
518106

EAGER LED
亿格创



Case Gallery

SHENZHEN EAGER LED CO., LTD

