



Shenzhen Eager LED Co.,Ltd. is a professional LED display manufacturer & exporter with 12 years experience in Shenzhen China. Since its foundation, EagerLED has been engaged in full color LED displays for indoor and outdoor use and has become one of the leaders in the field of LED display.

EagerLED has offered many kinds of LED display solutions, such as advertising LED display, rental LED display, front service LED display, flexible LED display, poster LED display, transparent LED display, indoor HD LED display, stadium perimeter LED display and creative LED displays.

EagerLED pays great attention to research and development of LED display products. At present, there are more than 15 experienced engineers in the R&D department, doing their utmost to develop the most advanced LED displays. EagerLED's clients can receive information of new products and technologies every now and then.

EagerLED focuses on overseas market since its establishment. Until now, its LED displays have been used in more than 90 countries and areas, especially the countries and areas from Europe, North America, South America and Middle East.

EagerLED would like to establish long-term and mutually beneficial relations with customers and believe that customers are the most important resources of any enterprise.

SHENZHEN EAGER LED CO., LTD.

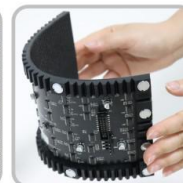
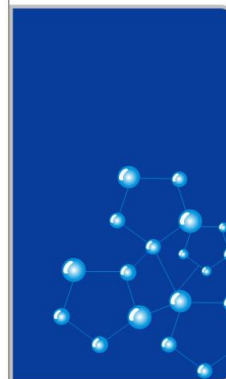
Tel: +86-755-23190947

Mob/Whatsapp/Wechat: +86-152-2013-3050

E-mail: manager@eagerled.com

Website: <https://www.eagerled.com>

Address: Building C, Zhongyu High-Tech Industrial Park, Heshuikou, Matian, Guangming, Shenzhen, China 518106



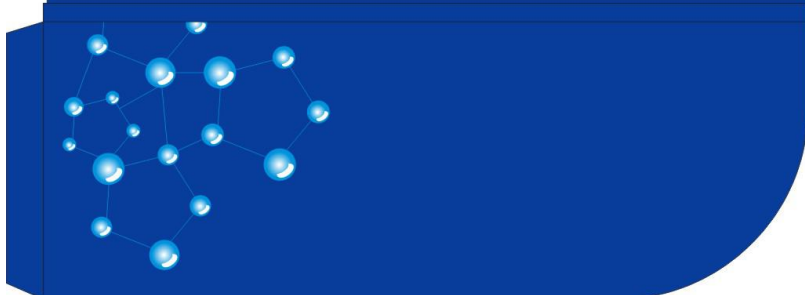
SHENZHEN EAGER LED CO., LTD

PROFESSIONAL

LED DISPLAY

MANUFACTURER & EXPORTER

<https://www.eagerled.com>





SHENZHEN EAGER LED CO., LTD.



Tel: +86-755-23190947

Mob/Whatsapp/Wechat: +86-152-2013-3050

E-mail: manager@eagerled.com

Website: <https://www.eagerled.com>

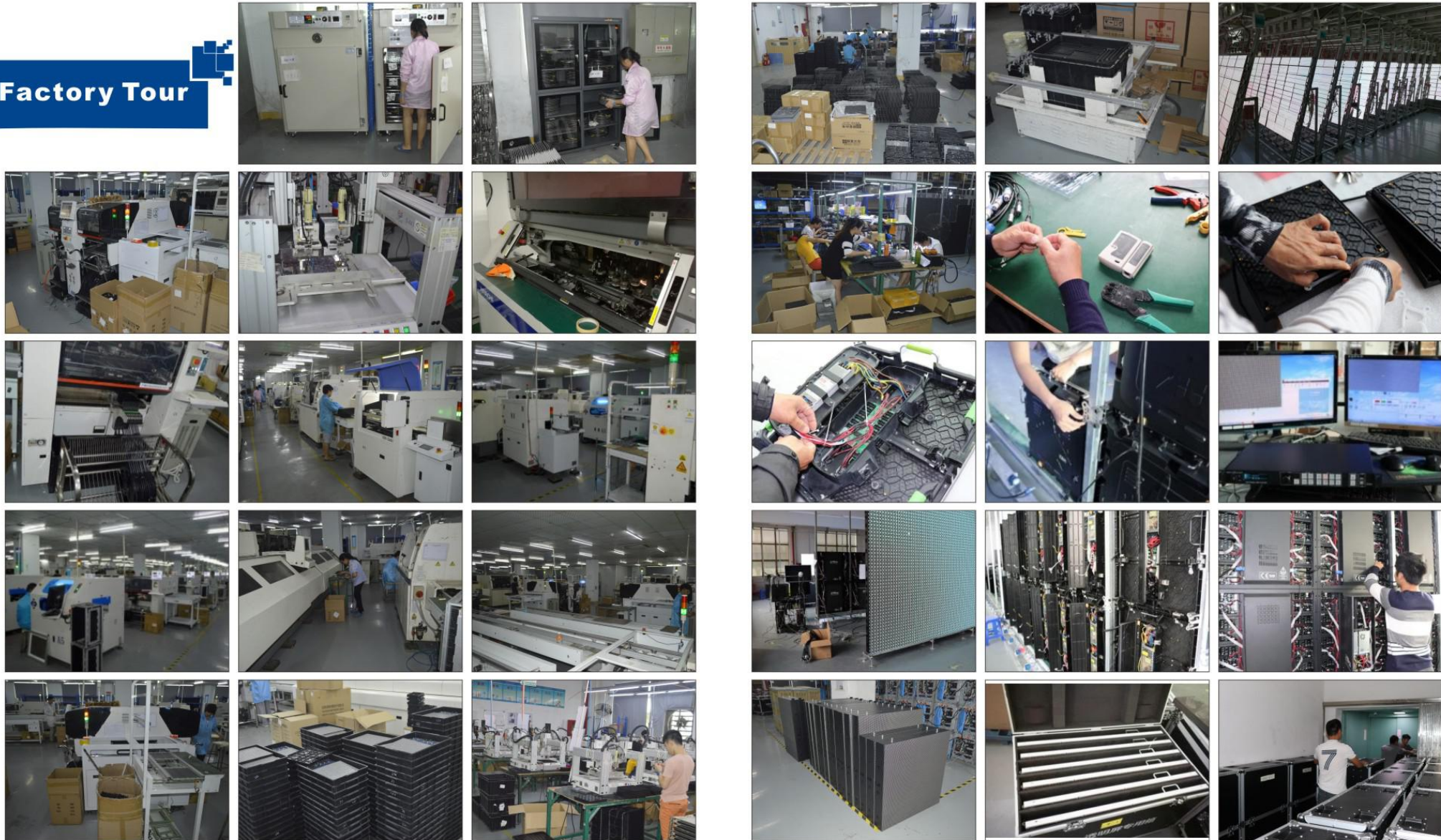
Address: Building C, Zhongyu High-Tech Industrial Park, Heshuikou, Matian, Guangming, Shenzhen, China 518106



Customer Visiting

SHENZHEN EAGER LED CO., LTD

Factory Tour



PARAMETERS

Indoor Die-Cast Aluminum Wallpaper Front Service LED Display			
Pixel Pitch(mm)	P2.97	P3.91	P4.81
Pixel Configuration	SMD2020	SMD2020	SMD2020
Density(pixels/m ²)	112,896	65,536	43,264
Module Resolution (Pixels)	84x84	64x64	52x52
Module Size (mm)	250x250	250x250	250x250
Driving Mode(duty)	1/28	1/16	1/13
Cabinet Size (mm)	1000x250	1000x250	1000x250
Cabinet Weight (KG)	6	6	6
Brightness (cd/m ²)	≥1,000	≥1,200	≥1,000
Viewing Angle(°)	120	120	120
Gray Grade(bits)	14	14	14
Operation Power	AC100-240V 50-60Hz	AC100-240V 50-60Hz	AC100-240V 50-60Hz
Max. Power Consumption (W/m ²)	480	576	560
Avg. Power Consumption (W/m ²)	160	192	190
Frame Frequency(Hz)	≥60	≥60	≥60
Refresh Frequency(Hz)	≥3,840	≥3,840	≥3,840
Working Temperature(°C)	-20~+60	-20~+60	-20~+60
Lifetime(Hours)	100,000	100,000	100,000
Protection Grade	IP 31	IP 31	IP 31



Indoor Wallpaper Front Service LED Display

As its name suggests, wallpaper front service LED display can be mounted on the wall directly without any structure. The thickness is only 60mm, which is thinner than any other wall-mounted screen. It is easy to do front service with a vacuum chuck tool. We use 1000x250mm die-cast aluminum cabinet, which ensures perfect screen flatness. The cabinet fits all 250x250mm LED modules, hence, easy for marketing and upgrade.

SHENZHEN EAGER LED CO., LTD.



Tel: +86-755-23190947

Mob/Whatsapp/Wechat: +86-152-2013-3050

E-mail: manager@eagerled.com

Website: <https://www.eagerled.com>

Address: Building C, Zhongyu High-Tech Industrial Park, Heshuikou, Matian, Guangming, Shenzhen, China
518106

SHENZHEN EAGER LED CO., LTD



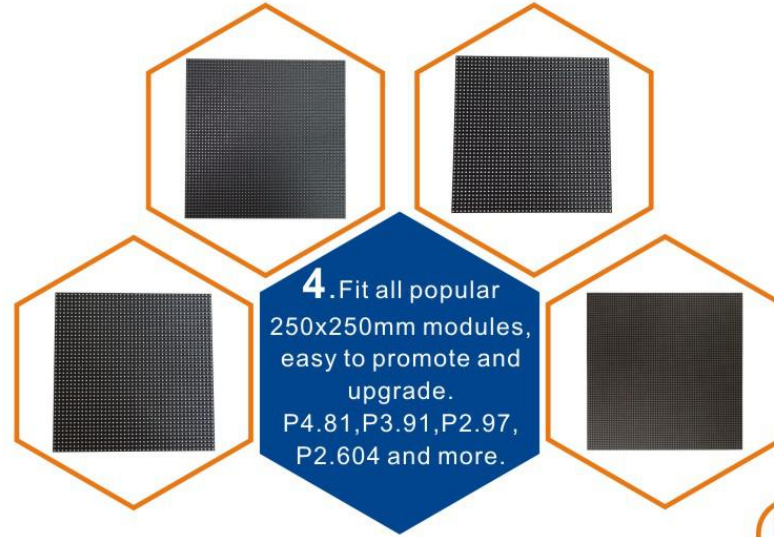
1. Slim wall-mounted cabinet, no structure, thickness only 60mm



2. Easy front service with vacuum chuck tool.



3. Precise die-cast cabinet, perfect screen flatness.



4. Fit all popular 250x250mm modules, easy to promote and upgrade. P4.81, P3.91, P2.97, P2.604 and more.

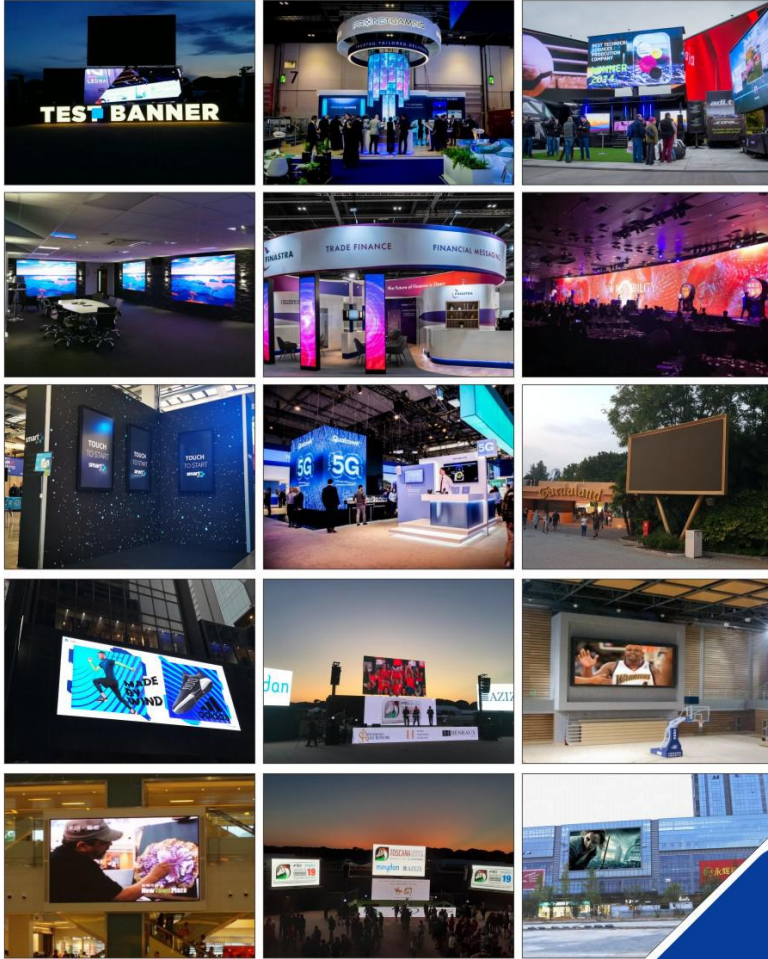
FEATURES

5. Quick installation with expansion bolts, one person can handle it.

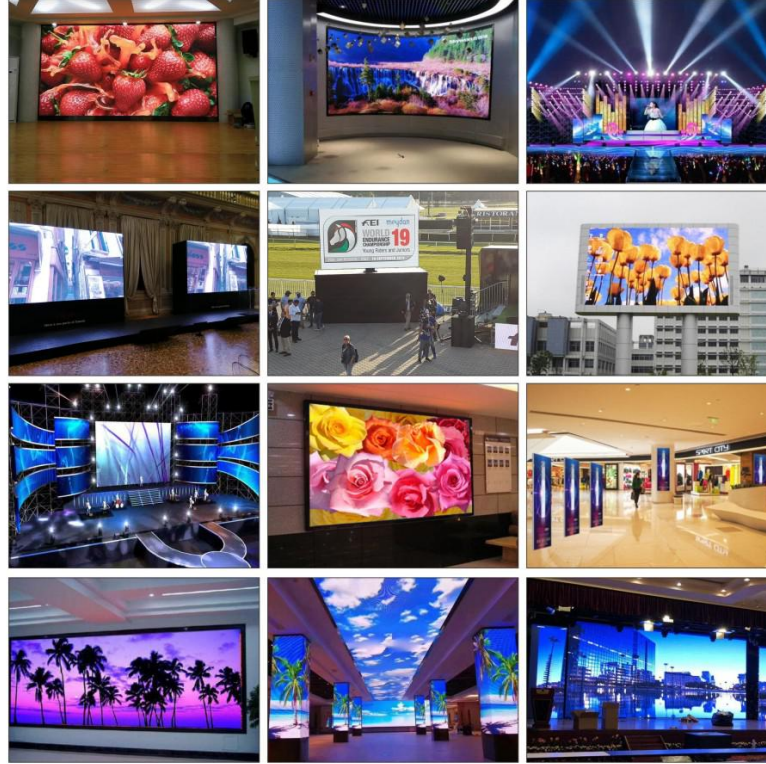


6. Screen size can be customized according to 250x250mm module. We can cut the 1000x250mm cabinet to meet your customized screen size.

Case Gallery



Case Gallery



SHENZHEN EAGER LED CO., LTD.

Tel: +86-755-23190947

Mob/Whatsapp/Wechat: +86-152-2013-3050

E-mail: manager@eagerled.com

Website: <https://www.eagerled.com>

Address: Building C, Zhongyu High-Tech Industrial Park, Heshuikou, Matian, Guangming, Shenzhen, China 518106

EAGER LED
亿格创
LED DISPLAY

EAGER LED
亿格创



Case Gallery

SHENZHEN EAGER LED CO., LTD

