



Shenzhen Eager LED Co.,Ltd. is a professional LED display manufacturer & exporter with 12 years experience in Shenzhen China. Since its foundation, EagerLED has been engaged in full color LED displays for indoor and outdoor use and has become one of the leaders in the field of LED display.

EagerLED has offered many kinds of LED display solutions, such as advertising LED display, rental LED display, front service LED display, flexible LED display, poster LED display, transparent LED display, indoor HD LED display, stadium perimeter LED display and creative LED displays.

EagerLED pays great attention to research and development of LED display products. At present, there are more than 15 experienced engineers in the R&D department, doing their utmost to develop the most advanced LED displays. EagerLED's clients can receive information of new products and technologies every now and then.

EagerLED focuses on overseas market since its establishment. Until now, its LED displays have been used in more than 90 countries and areas, especially the countries and areas from Europe, North America, South America and Middle East.

EagerLED would like to establish long-term and mutually beneficial relations with customers and believe that customers are the most important resources of any enterprise.

SHENZHEN EAGER LED CO., LTD.

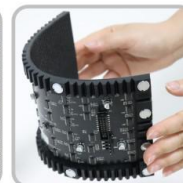
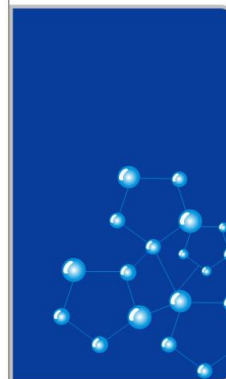
Tel: +86-755-23190947

Mob/Whatsapp/Wechat: +86-152-2013-3050

E-mail: manager@eagerled.com

Website: <https://www.eagerled.com>

Address: Building C, Zhongyu High-Tech Industrial Park, Heshuikou, Matian, Guangming, Shenzhen, China 518106



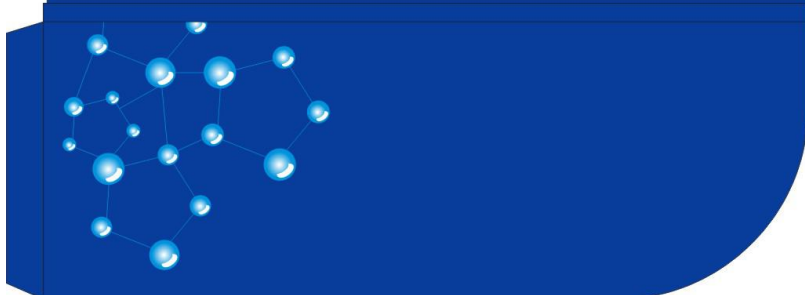
SHENZHEN EAGER LED CO., LTD

PROFESSIONAL

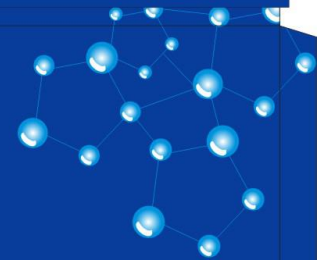
LED DISPLAY

MANUFACTURER & EXPORTER

<https://www.eagerled.com>



Company Certification





SHENZHEN EAGER LED CO., LTD.



Tel: +86-755-23190947

Mob/Whatsapp/Wechat: +86-152-2013-3050

E-mail: manager@eagerled.com

Website: <https://www.eagerled.com>

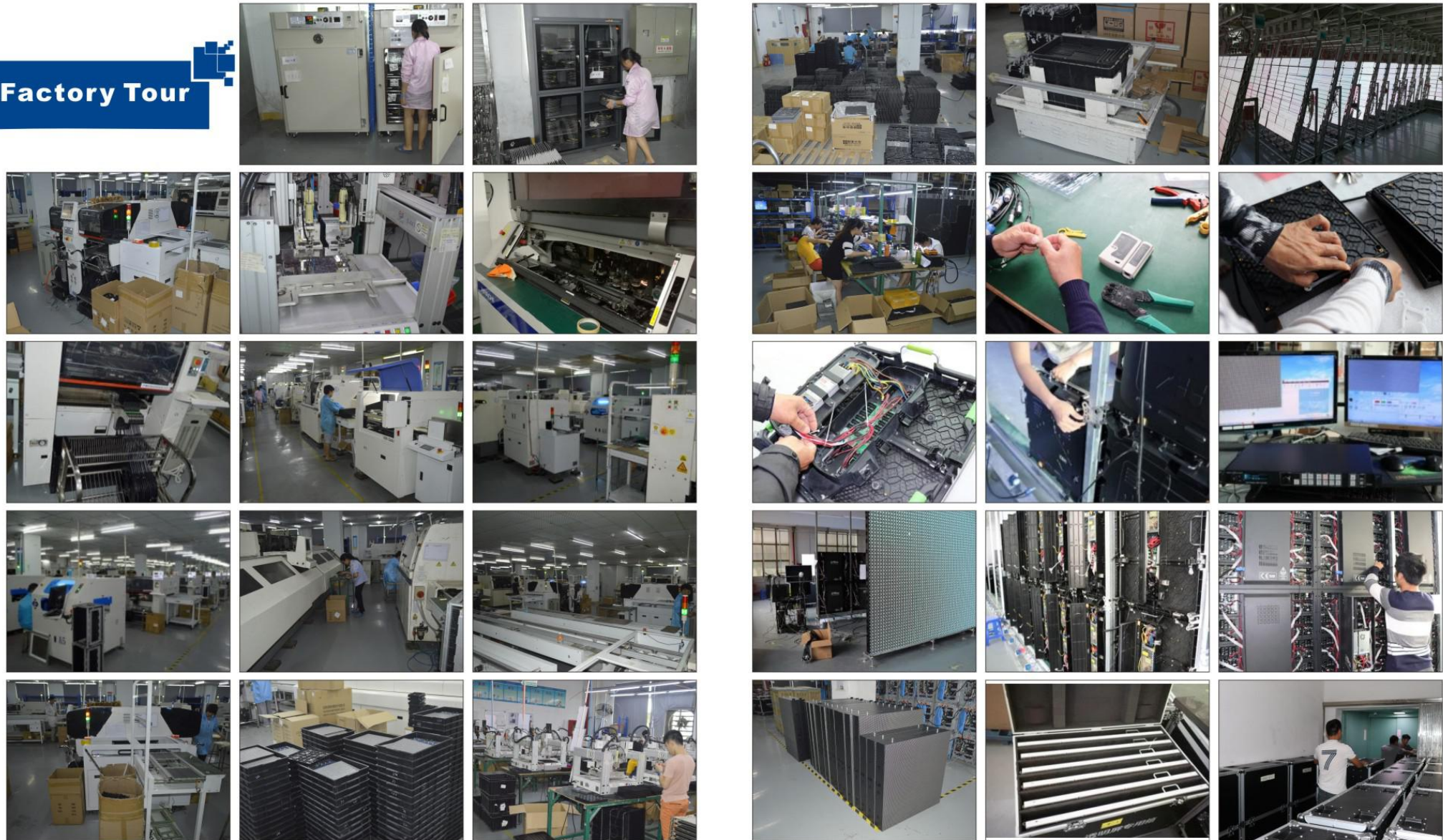
Address: Building C, Zhongyu High-Tech Industrial Park, Heshuikou, Matian, Guangming, Shenzhen, China 518106



Customer Visiting

SHENZHEN EAGER LED CO., LTD

Factory Tour



PARAMETERS

Indoor HD Die-Cast Front Service LED Display				
Pixel Pitch (mm)	P1.86	P1.66	P1.53	P1.25
Pixel Configuration	SMD1515	SMD1010	SMD1010	SMD1010
Density (Pixels/m ²)	288,906	360,000	422,500	640,000
Module Resolution (Pixels)	172x86	192x96	208x104	256x128
Module Size (mm)	320x160	320x160	320x160	320x160
Driving Mode (Duty)	1/43	1/32	1/26	1/32
Cabinet Size (mm)	640x480	640x480	640x480	640x480
Cabinet Weight (KG)	8	8	8	8
Brightness (CD/m ²)	≥500	≥500	≥500	≥500
Viewing Angle (°)	120	120	120	120
Gray Grade (Bits)	14	14	14	14
Operation Power	AC100-240V 50-60Hz	AC100-240V 50-60Hz	AC100-240V 50-60Hz	AC100-240V 50-60Hz
Max. Power Consumption (W/m ²)	580	580	580	580
Avg. Power Consumption (W/m ²)	195	195	195	195
Frame Frequency (Hz)	≥60	≥60	≥60	≥60
Refresh Frequency (Hz)	≥3,840	≥3,840	≥3,840	≥3,840
Working Temperature (°C)	-20~+60	-20~+60	-20~+60	-20~+60
Lifetime (Hours)	100,000	100,000	100,000	100,000
Protection Grade	IP 31	IP 31	IP 31	IP 31



Indoor HD LED Display

We adopt 320x160mm module and 640x480mm die-cast cabinet to make our indoor HD series. 320x160mm module is popular in the market, hence, reducing the cost. It is full front service with external cabling, which is easier for installation and maintenance. High quality LED lamps and 3840Hz refresh rate ensures perfect display performance, meeting the requirements of live broadcast.

SHENZHEN EAGER LED CO., LTD.



Tel: +86-755-23190947

Mob/Whatsapp/Wechat: +86-152-2013-3050

E-mail: manager@eagerled.com

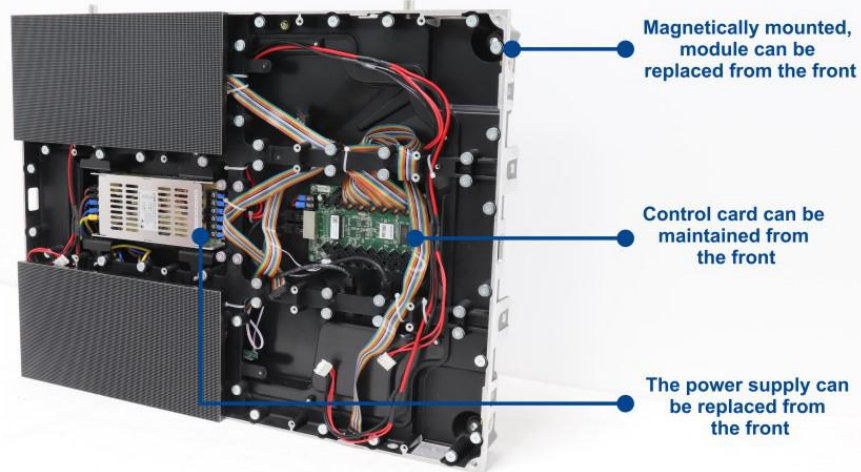
Website: <https://www.eagerled.com>

Address: Building C, Zhongyu High-Tech Industrial Park, Heshuikou, Matian, Guangming, Shenzhen, China
518106

SHENZHEN EAGER LED CO., LTD

FEATURES

- ③ Modules can be fast magnetic front service with vacuum chuck tool.
- ③ Simple structure, easy wall-mounted installation, saving space and labor.
- ③ Die-cast cabinet with external cabling, avoiding headachy work of mounting modules.
- ③ 3840Hz refresh rate which eliminates scan lines and flickers on the screen through camera.



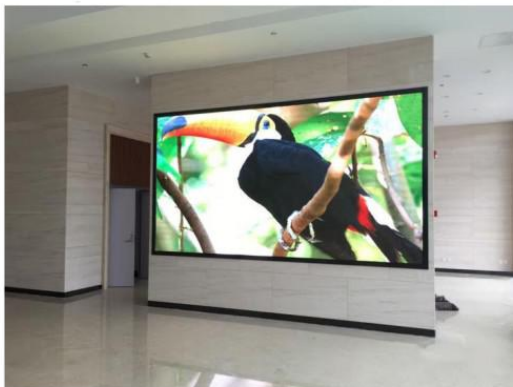
Applications

Education: Campus area, training institutions, etc;

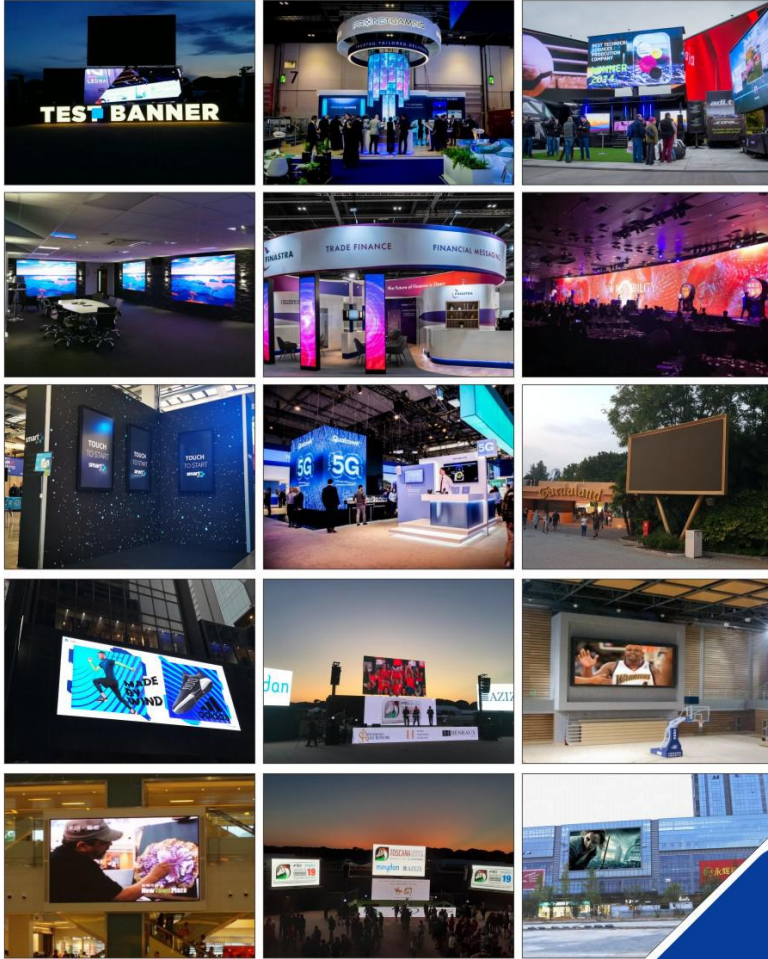
Public places: Airport, railway, highway and other transportation industries, libraries, museums, shopping malls, etc;

Business presentation: TV studio, large-scale performances and commercial exhibitions, hotel lobby, enterprises and institutions, etc;

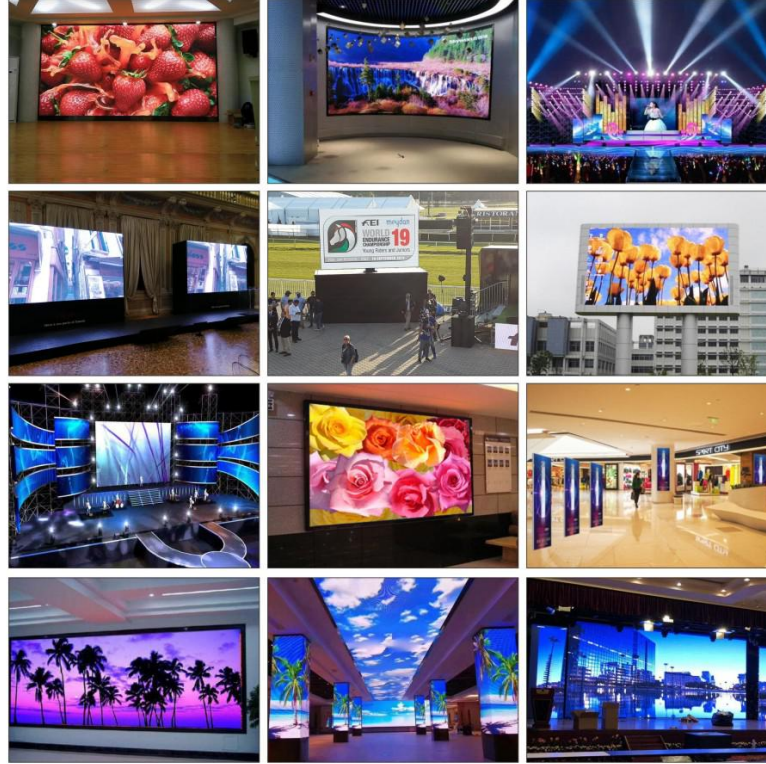
Government department: Convenient publicity, work guide, open government affairs, etc.



Case Gallery



Case Gallery



SHENZHEN EAGER LED CO., LTD.

Tel: +86-755-23190947

Mob/Whatsapp/Wechat: +86-152-2013-3050

E-mail: manager@eagerled.com

Website: <https://www.eagerled.com>

Address: Building C, Zhongyu High-Tech Industrial Park, Heshuikou, Matian, Guangming, Shenzhen, China 518106

EAGER LED
亿格创
LED DISPLAY

EAGER LED
亿格创



Case Gallery

SHENZHEN EAGER LED CO., LTD

