



Shenzhen Eager LED Co.,Ltd. is a professional LED display manufacturer & exporter with 12 years experience in Shenzhen China. Since its foundation, EagerLED has been engaged in full color LED displays for indoor and outdoor use and has become one of the leaders in the field of LED display.

EagerLED has offered many kinds of LED display solutions, such as advertising LED display, rental LED display, front service LED display, flexible LED display, poster LED display, transparent LED display, indoor HD LED display, stadium perimeter LED display and creative LED displays.

EagerLED pays great attention to research and development of LED display products. At present, there are more than 15 experienced engineers in the R&D department, doing their utmost to develop the most advanced LED displays. EagerLED's clients can receive information of new products and technologies every now and then.

EagerLED focuses on overseas market since its establishment. Until now, its LED displays have been used in more than 90 countries and areas, especially the countries and areas from Europe, North America, South America and Middle East.

EagerLED would like to establish long-term and mutually beneficial relations with customers and believe that customers are the most important resources of any enterprise.

### SHENZHEN EAGER LED CO., LTD.

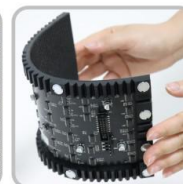
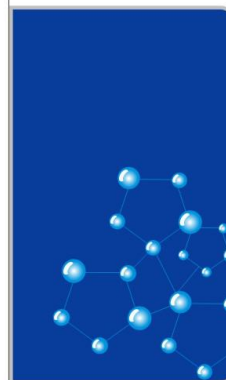
Tel: +86-755-23190947

Mob/Whatsapp/Wechat: +86-152-2013-3050

E-mail: manager@eagerled.com

Website: <https://www.eagerled.com>

Address: Building C, Zhongyu High-Tech Industrial Park, Heshuikou, Matian, Guangming, Shenzhen, China 518106



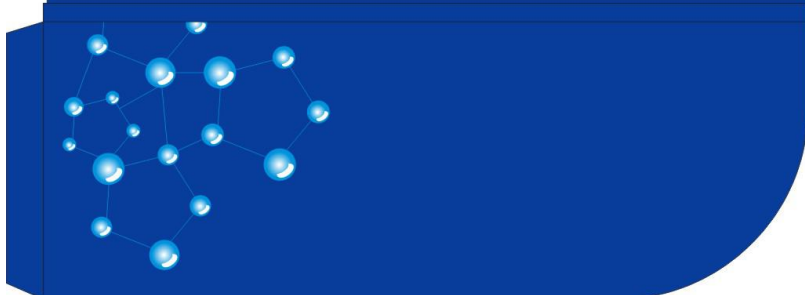
## SHENZHEN EAGER LED CO., LTD

PROFESSIONAL

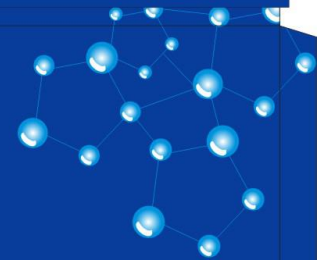
LED DISPLAY

MANUFACTURER & EXPORTER

<https://www.eagerled.com>



# Company Certification







**SHENZHEN EAGER LED CO., LTD.**



Tel: +86-755-23190947

Mob/Whatsapp/Wechat: +86-152-2013-3050

E-mail: manager@eagerled.com

Website: <https://www.eagerled.com>

Address: Building C, Zhongyu High-Tech Industrial Park, Heshuikou, Matian, Guangming, Shenzhen, China 518106



## Customer Visiting

**SHENZHEN EAGER LED CO., LTD**



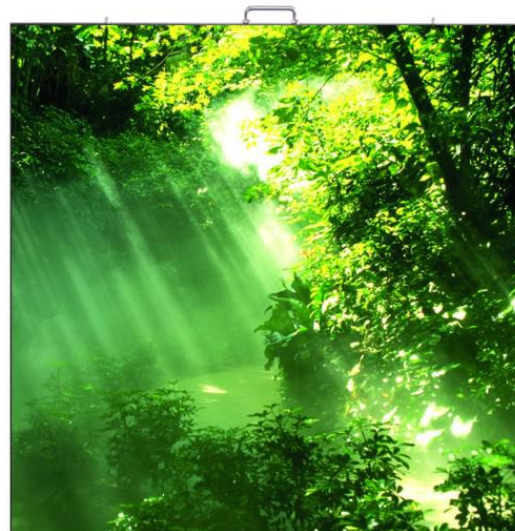
## Factory Tour





## PARAMETERS

Indoor Fixed Installation LED Display			
Pixel Pitch(mm)	P3	P4	P5
Pixel Configuration	SMD2020	SMD2020	SMD2020
Density(pixels/m <sup>2</sup> )	111,111	62,500	40,000
Module Resolution (Pixels)	64x64	64x32	64x32
Module Size (mm)	192x192	256x128	320x160
Driving Mode(duty)	1/32	1/16	1/16
Cabinet Size (mm)	576x576	512x512	640x640
Cabinet Weight (KG)	9	8	11
Brightness (cd/m <sup>2</sup> )	≥1,000	≥1,000	≥800
Viewing Angle(°)	120	120	120
Gray Grade(bits)	14	14	14
Operation Power	AC100-240V 50-60Hz	AC100-240V 50-60Hz	AC100-240V 50-60Hz
Max. Power Consumption (W/m <sup>2</sup> )	525	580	312
Avg. Power Consumption (W/m <sup>2</sup> )	175	190	104
Frame Frequency(Hz)	≥60	≥60	≥60
Refresh Frequency(Hz)	≥3,840	≥3,840	≥3,840
Working Temperature(°C)	-20~+60	-20~+60	-20~+60
Lifetime(hours)	100,000	100,000	100,000
Protection Grade	IP 31	IP 31	IP 31



### Indoor Fixed Installation LED Screen

We use the traditional plate metal cabinets. Its advantages are custom and low cost. The cabinet size, thickness and shape can be customized. Even the die-cast cabinet is so popular nowadays, people still use some plate metal cabinets for their indoor fixed installation LED screen projects.

SHENZHEN EAGER LED CO., LTD.



Tel: +86-755-23190947

Mob/Whatsapp/Wechat: +86-152-2013-3050

E-mail: manager@eagerled.com

Website: <https://www.eagerled.com>

Address: Building C, Zhongyu High-Tech Industrial Park, Heshuikou, Matian, Guangming, Shenzhen, China  
518106

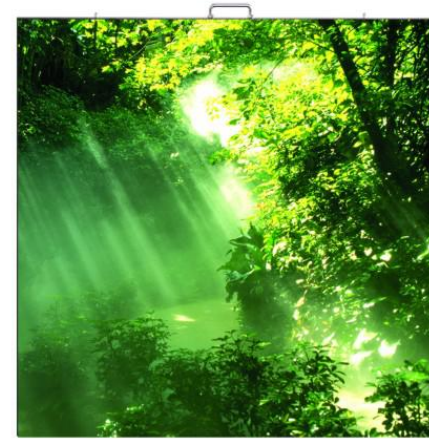
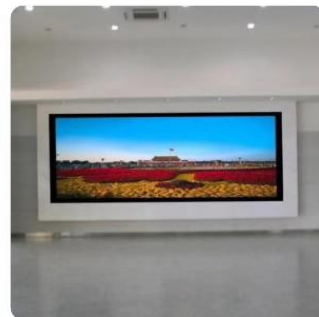
SHENZHEN EAGER LED CO., LTD

## FEATURES

- ① **Customized cabinet:** size, thickness and shape can be made according to customers' request.
- ② **Cost effective:** the cost of plate metal cabinet is lower than the die-cast cabinet.
- ③ **Reliable quality:** mature product which has been tested for long time, no worry about the stability.



## Applications



Handle



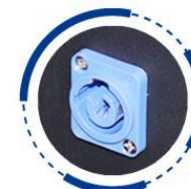
Fast lock



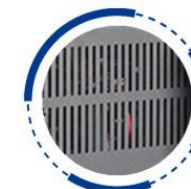
Positioning pin



Signal connector



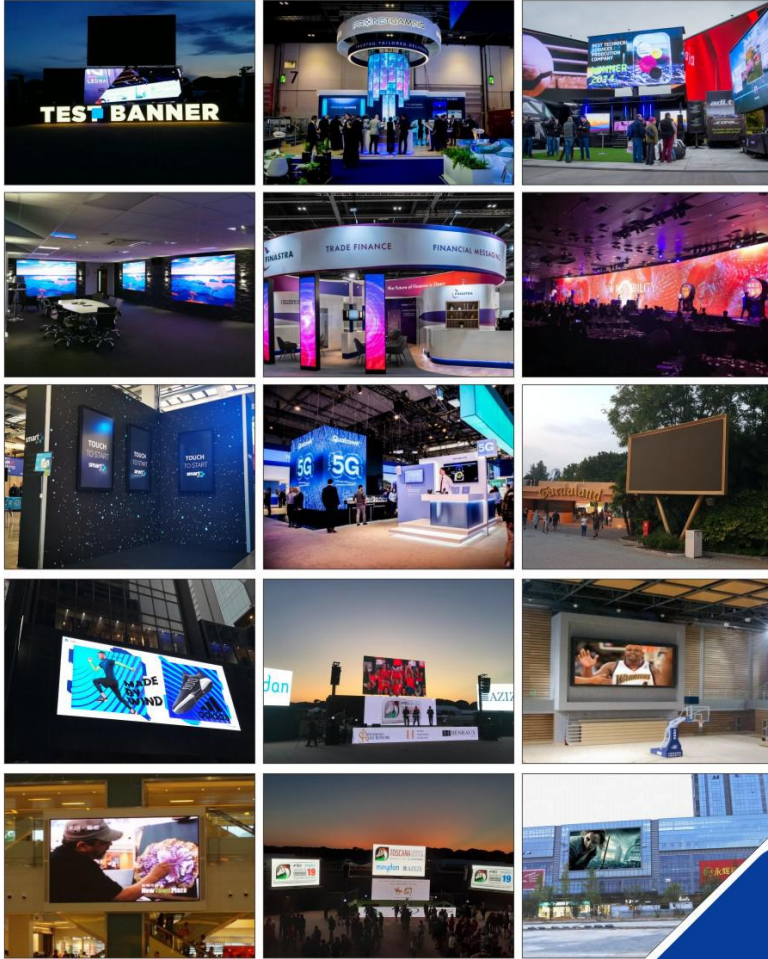
Power connector



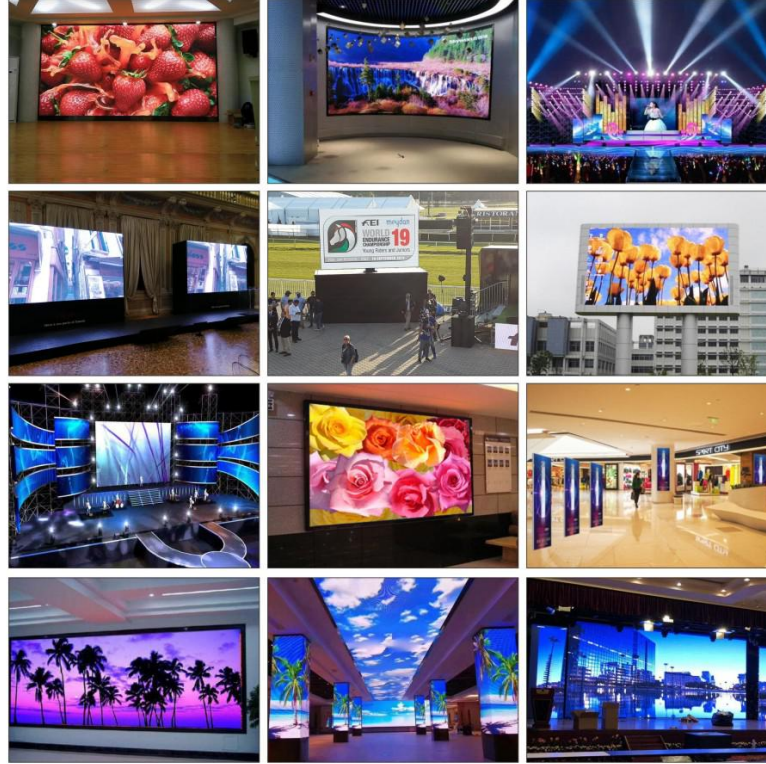
Heat emission holes



## Case Gallery



## Case Gallery



SHENZHEN EAGER LED CO., LTD.

Tel: +86-755-23190947

Mob/Whatsapp/Wechat: +86-152-2013-3050

E-mail: [manager@eagerled.com](mailto:manager@eagerled.com)

Website: <https://www.eagerled.com>

Address: Building C, Zhongyu High-Tech Industrial Park, Heshuikou, Matian, Guangming, Shenzhen, China 518106

**EAGER LED**  
亿格创  
LED DISPLAY

**EAGER LED**  
亿格创



## Case Gallery

SHENZHEN EAGER LED CO., LTD



