



Shenzhen Eager LED Co.,Ltd. is a professional LED display manufacturer & exporter with 12 years experience in Shenzhen China. Since its foundation, EagerLED has been engaged in full color LED displays for indoor and outdoor use and has become one of the leaders in the field of LED display.

EagerLED has offered many kinds of LED display solutions, such as advertising LED display, rental LED display, front service LED display, flexible LED display, poster LED display, transparent LED display, indoor HD LED display, stadium perimeter LED display and creative LED displays.

EagerLED pays great attention to research and development of LED display products. At present, there are more than 15 experienced engineers in the R&D department, doing their utmost to develop the most advanced LED displays. EagerLED's clients can receive information of new products and technologies every now and then.

EagerLED focuses on overseas market since its establishment. Until now, its LED displays have been used in more than 90 countries and areas, especially the countries and areas from Europe, North America, South America and Middle East.

EagerLED would like to establish long-term and mutually beneficial relations with customers and believe that customers are the most important resources of any enterprise.

SHENZHEN EAGER LED CO., LTD.

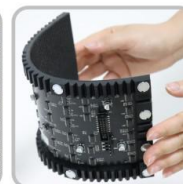
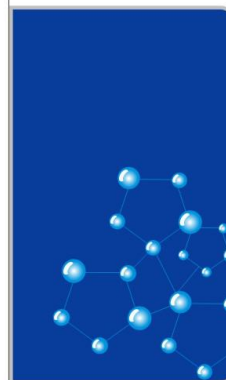
Tel: +86-755-23190947

Mob/Whatsapp/Wechat: +86-152-2013-3050

E-mail: manager@eagerled.com

Website: <https://www.eagerled.com>

Address: Building C, Zhongyu High-Tech Industrial Park, Heshuikou, Matian, Guangming, Shenzhen, China 518106



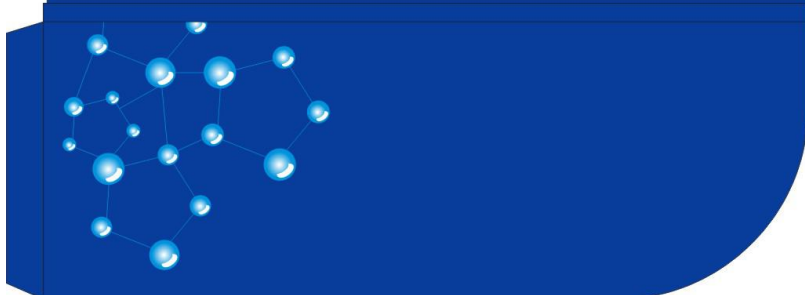
SHENZHEN EAGER LED CO., LTD

PROFESSIONAL

LED DISPLAY

MANUFACTURER & EXPORTER

<https://www.eagerled.com>





SHENZHEN EAGER LED CO., LTD.



Tel: +86-755-23190947

Mob/Whatsapp/Wechat: +86-152-2013-3050

E-mail: manager@eagerled.com

Website: <https://www.eagerled.com>

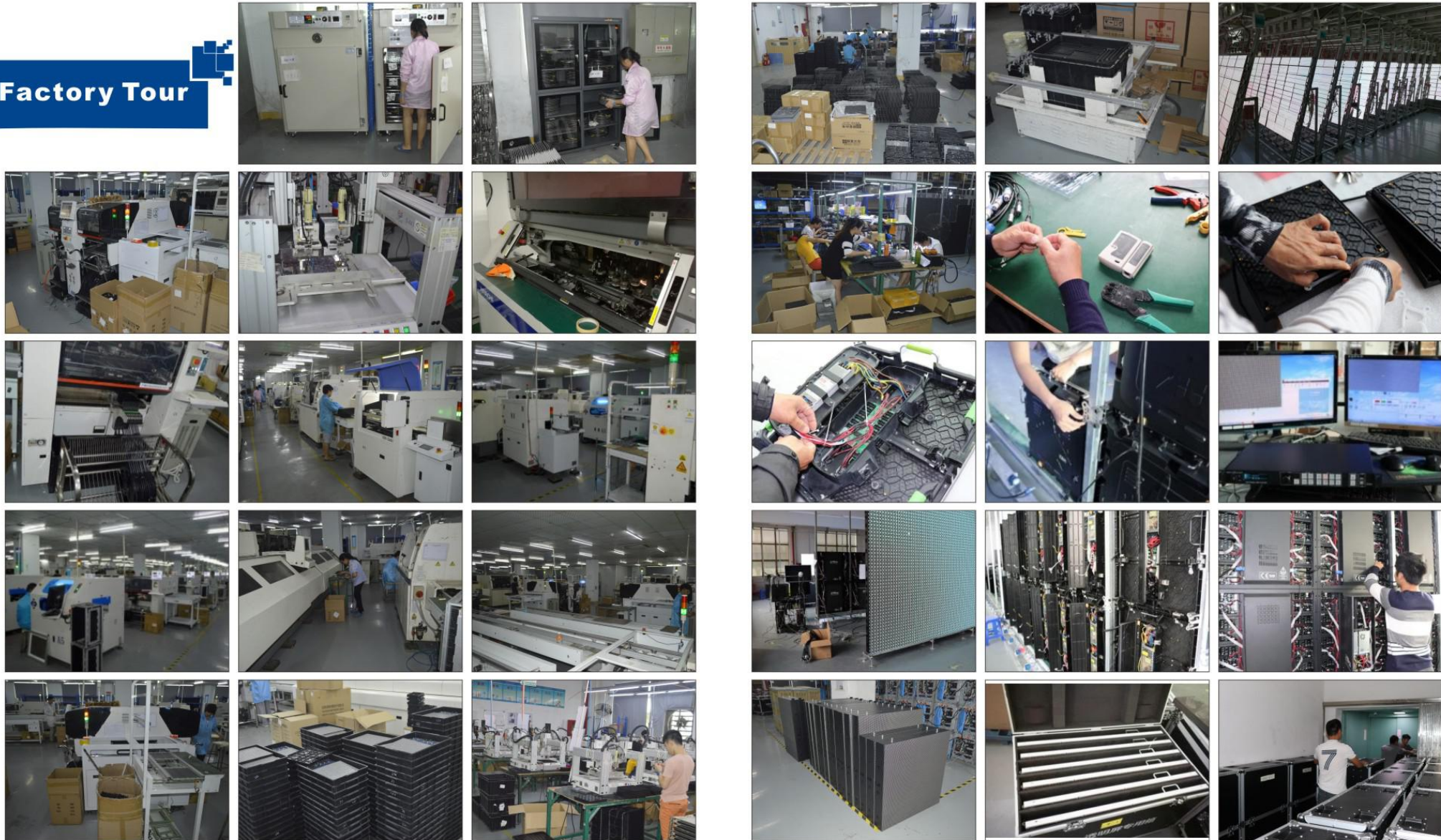
Address: Building C, Zhongyu High-Tech Industrial Park, Heshuikou, Matian, Guangming, Shenzhen, China 518106



Customer Visiting

SHENZHEN EAGER LED CO., LTD

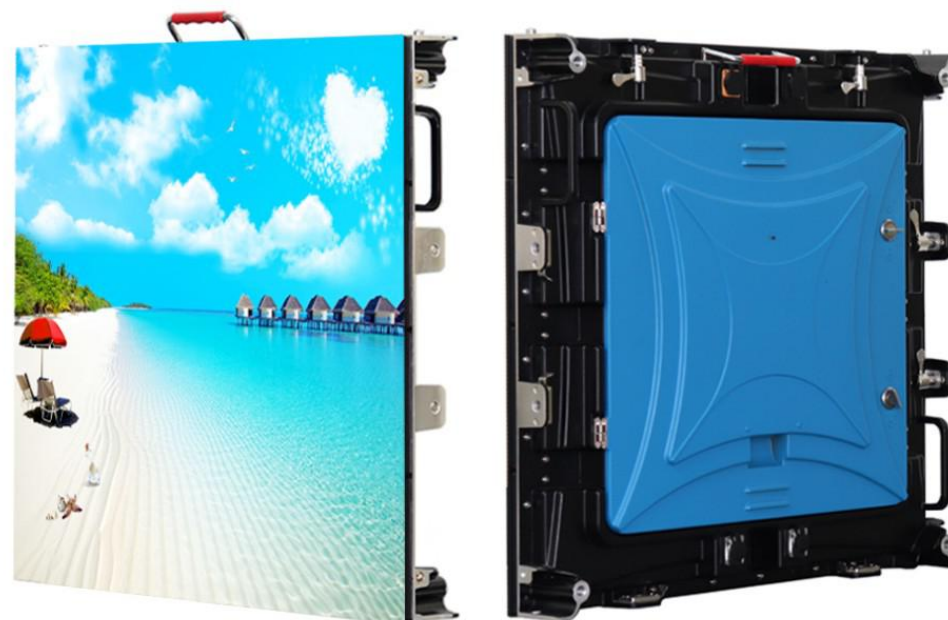
Factory Tour



PARAMETERS

640x640mm Die-cast Aluminum Rental LED Display

	Indoor		Outdoor	
	P2.5	P3.076	P4	P5
Pixel Pitch (mm)	P2.5	P3.076	P4	P5
Pixel Configuration	SMD2020	SMD2020	SMD1921	SMD2727
Density (Pixels/m ²)	160,000	105,689	62,500	40,000
Module Resolution (Pixels)	128x64	104x52	80x40	64x32
Module Size (mm)	320x160	320x160	320x160	320x160
Driving Mode (Duty)	1/32	1/26	1/10	1/8
Cabinet Size (mm)	640x640	640x640	640x640	640x640
Cabinet Weight (KG)	9	9	12.5	12.5
Brightness (cd/m ²)	≥1,000	≥1,000	≥5,500	≥6,000
Viewing Angle (°)	120	120	120	120
Gray Grade (Bits)	14	14	14	14
Operation Power	AC100-240V 50-60Hz	AC100-240V 50-60Hz	AC100-240V 50-60Hz	AC100-240V 50-60Hz
Max. Power Consumption (W/m ²)	457	413	909	836
Avg. Power Consumption (W/m ²)	153	138	303	280
Frame Frequency (Hz)	≥60	≥60	≥60	≥60
Refresh Frequency (Hz)	≥3,840	≥3,840	≥3,840	≥3,840
Working Temperature (°C)	-20~+60	-20~+60	-20~+60	-20~+60
Lifetime (Hours)	100,000	100,000	100,000	100,000
Protection Grade	IP 31	IP 31	IP 65	IP 65



640x640 Rental LED Display

640x640mm die-cast rental cabinet fits all 320x160mm LED modules, which are the most popular in the market. One module size and one standard cabinet makes it easy for marketing and promotion. The cabinet has two fast locks and positioning ball on the cabinet sides, hence, the better screen flatness and faster installation and disassembly.

SHENZHEN EAGER LED CO., LTD.



Tel: +86-755-23190947

Mob/Whatsapp/Wechat: +86-152-2013-3050

E-mail: manager@eagerled.com

Website: <https://www.eagerled.com>

Address: Building C, Zhongyu High-Tech Industrial Park, Heshuikou, Matian, Guangming, Shenzhen, China
518106

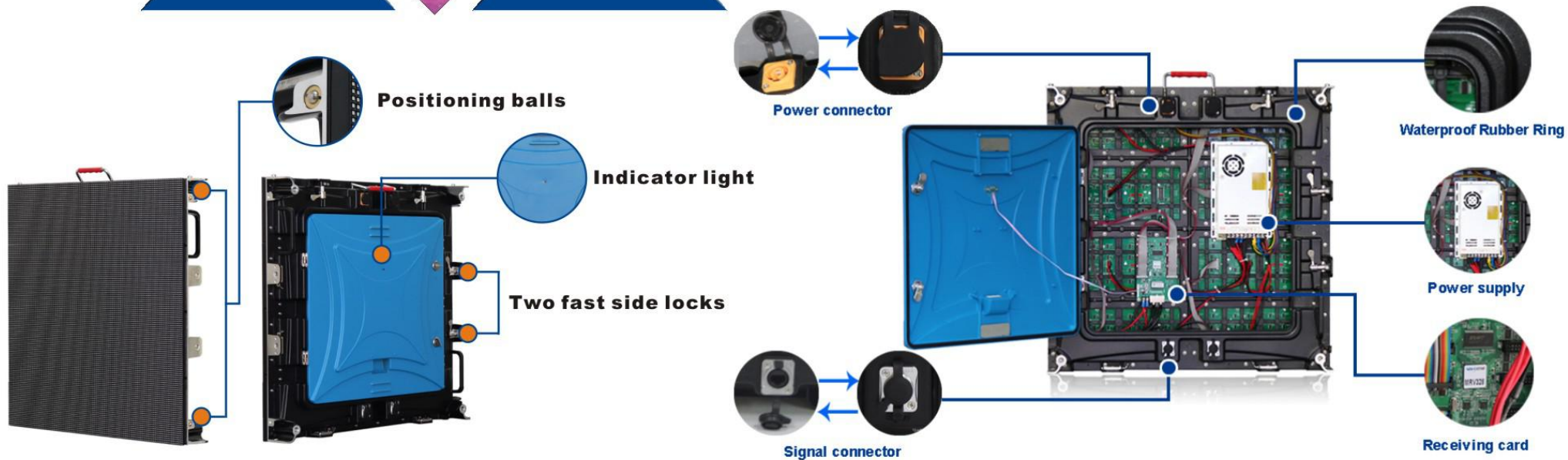
SHENZHEN EAGER LED CO., LTD

Applications

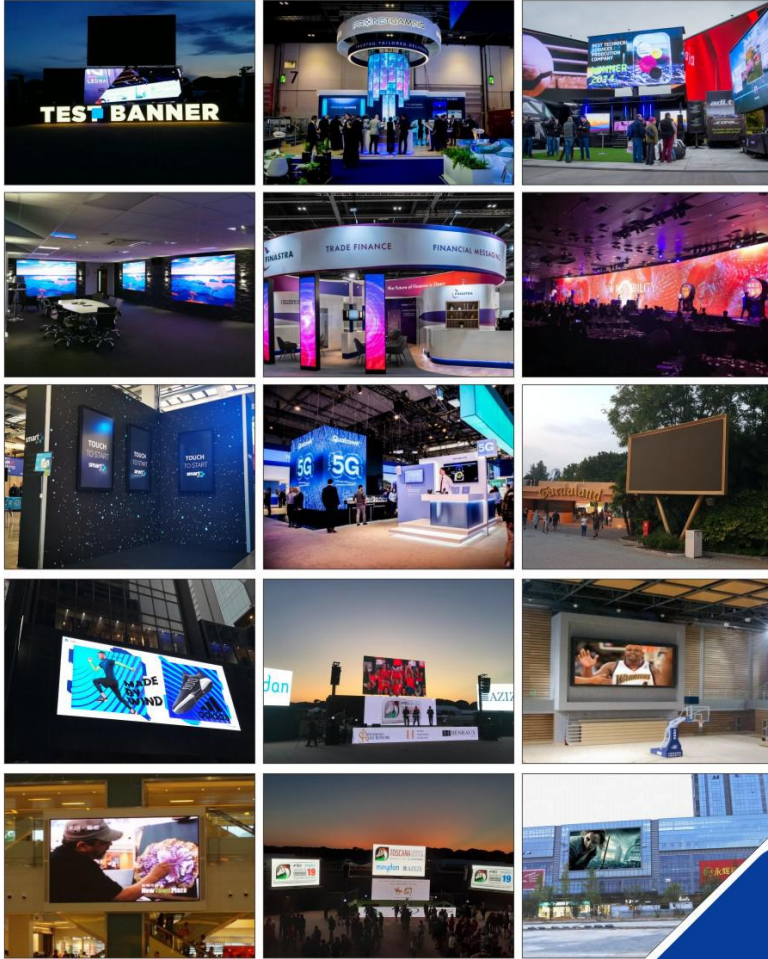


FEATURES

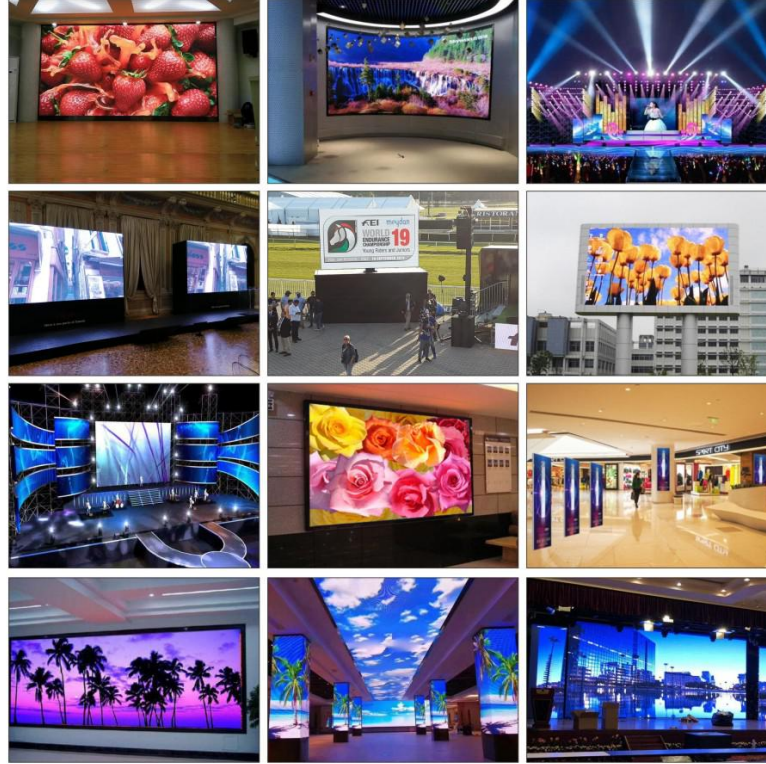
- 01 One cabinet for all 320x160mm modules, easier marketing.
- 02 Two fast side locks, better screen flatness.
- 03 Positioning balls on cabinet side, faster installation and disassembly.
- 04 Slim cabinet, only 80mm thick; light weight, only 9KG for indoor cabinet.
- 05 No-gaps between cabinets, due to precise die-cast cabinet.



Case Gallery



Case Gallery



SHENZHEN EAGER LED CO., LTD.

Tel: +86-755-23190947

Mob/Whatsapp/Wechat: +86-152-2013-3050

E-mail: manager@eagerled.com

Website: <https://www.eagerled.com>

Address: Building C, Zhongyu High-Tech Industrial Park, Heshuikou, Matian, Guangming, Shenzhen, China 518106

EAGER LED
亿格创
LED DISPLAY

EAGER LED
亿格创



Case Gallery

SHENZHEN EAGER LED CO., LTD

