



Shenzhen Eager LED Co.,Ltd. is a professional LED display manufacturer & exporter with 12 years experience in Shenzhen China. Since its foundation, EagerLED has been engaged in full color LED displays for indoor and outdoor use and has become one of the leaders in the field of LED display.

EagerLED has offered many kinds of LED display solutions, such as advertising LED display, rental LED display, front service LED display, flexible LED display, poster LED display, transparent LED display, indoor HD LED display, stadium perimeter LED display and creative LED displays.

EagerLED pays great attention to research and development of LED display products. At present, there are more than 15 experienced engineers in the R&D department, doing their utmost to develop the most advanced LED displays. EagerLED's clients can receive information of new products and technologies every now and then.

EagerLED focuses on overseas market since its establishment. Until now, its LED displays have been used in more than 90 countries and areas, especially the countries and areas from Europe, North America, South America and Middle East.

EagerLED would like to establish long-term and mutually beneficial relations with customers and believe that customers are the most important resources of any enterprise.

### SHENZHEN EAGER LED CO., LTD.

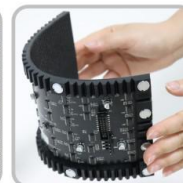
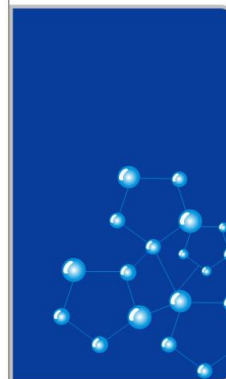
Tel: +86-755-23190947

Mob/Whatsapp/Wechat: +86-152-2013-3050

E-mail: manager@eagerled.com

Website: <https://www.eagerled.com>

Address: Building C, Zhongyu High-Tech Industrial Park, Heshuikou, Matian, Guangming, Shenzhen, China 518106



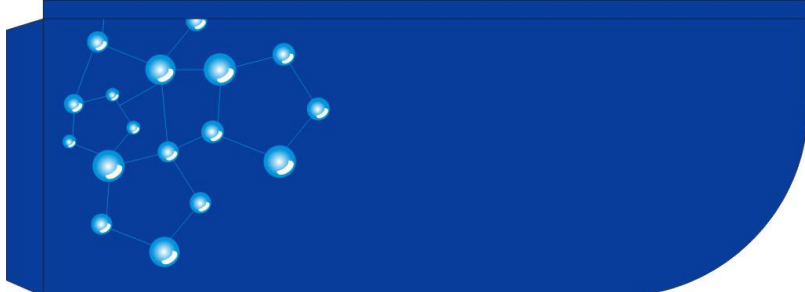
## SHENZHEN EAGER LED CO., LTD

PROFESSIONAL

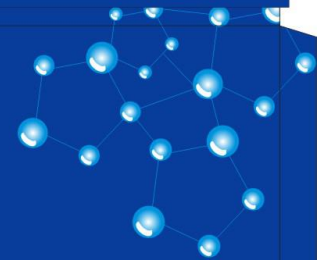
LED DISPLAY

MANUFACTURER & EXPORTER

<https://www.eagerled.com>



# Company Certification







**SHENZHEN EAGER LED CO., LTD.**



Tel: +86-755-23190947

Mob/Whatsapp/Wechat: +86-152-2013-3050

E-mail: [manager@eagerled.com](mailto:manager@eagerled.com)

Website: <https://www.eagerled.com>

Address: Building C, Zhongyu High-Tech Industrial Park, Heshuikou, Matian, Guangming, Shenzhen, China 518106

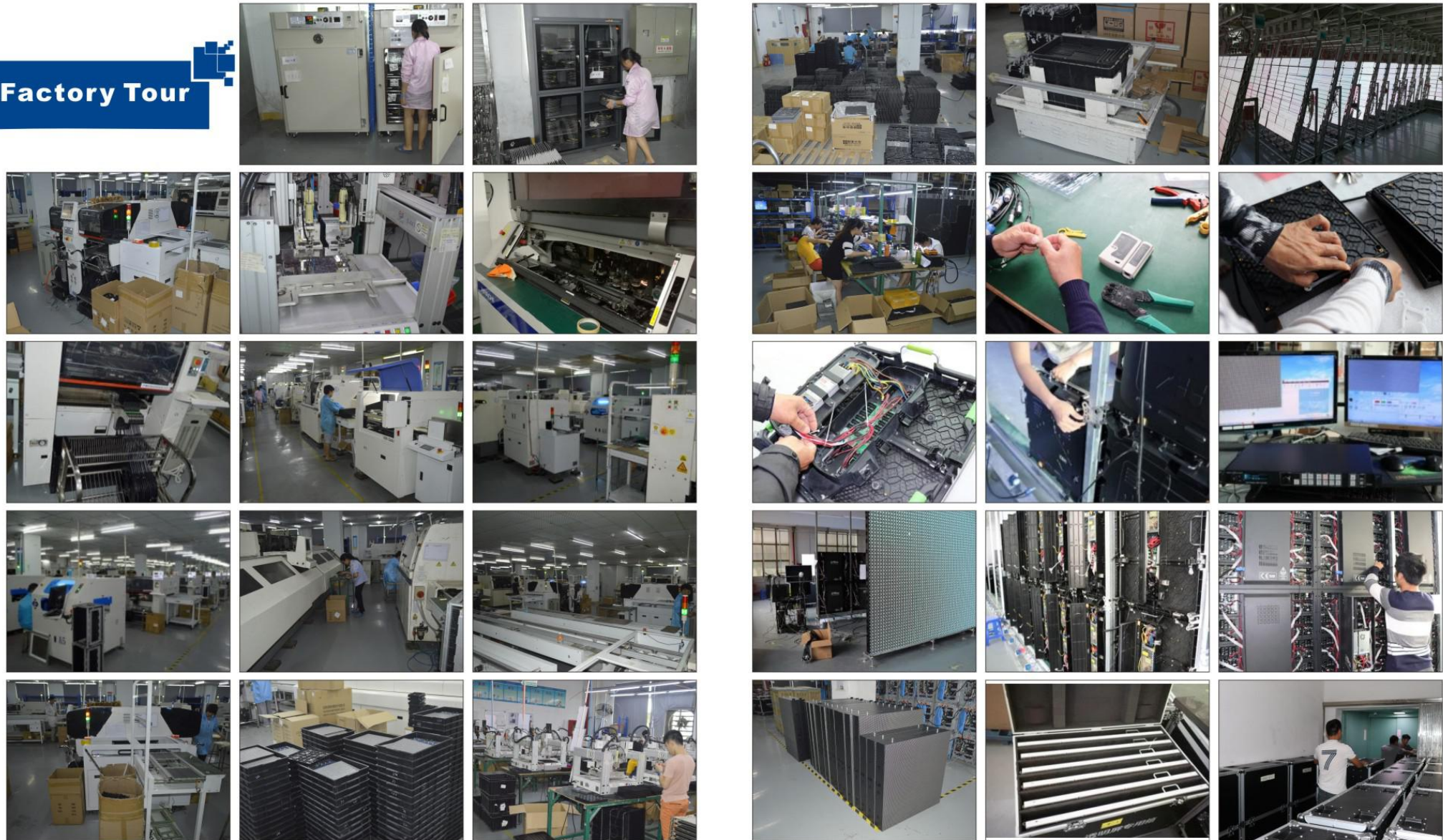


## Customer Visiting

**SHENZHEN EAGER LED CO., LTD**



## Factory Tour





## PARAMETERS

| Indoor 640x480mm Die-Cast Front Service LED Display |                    |                    |                    |
|---|--------------------|--------------------|--------------------|
| Pixel Pitch(mm)                                     | P2                 | P2.5               | P3.076             |
| Pixel Configuration                                 | SMD1515            | SMD2121            | SMD2121            |
| Density(Pixels/m <sup>2</sup> )                     | 250,000            | 160,000            | 105,688            |
| Module Resolution (Pixels)                          | 160x80             | 128x64             | 104x52             |
| Module Size(mm)                                     | 320x160            | 320x160            | 320x160            |
| Driving Mode(Duty)                                  | 1/40               | 1/32               | 1/26               |
| Cabinet Size(mm)                                    | 640x480            | 640x480            | 640x480            |
| Cabinet Weight (KG)                                 | 8                  | 8                  | 8                  |
| Brightness(CD/m <sup>2</sup> )                      | ≥800               | ≥1,000             | ≥1,000             |
| Viewing Angle(°)                                    | 120                | 120                | 120                |
| Gray Grade(Bits)                                    | 14                 | 14                 | 14                 |
| Operation Power                                     | AC100-240V 50-60Hz | AC100-240V 50-60Hz | AC100-240V 50-60Hz |
| Max. Power Consumption (W/m <sup>2</sup> )          | 439                | 457                | 413                |
| Avg. Power Consumption (W/m <sup>2</sup> )          | 150                | 153                | 138                |
| Frame Frequency(Hz)                                 | ≥60                | ≥60                | ≥60                |
| Refresh Frequency(Hz)                               | ≥3,840             | ≥3,840             | ≥3,840             |
| Working Temperature(°C)                             | -20~+60            | -20~+60            | -20~+60            |
| Lifetime(Hours)                                     | 100,000            | 100,000            | 100,000            |
| Protection Grade                                    | IP 31              | IP 31              | IP 31              |



### 640x480mm Indoor Magnetic Front Service LED Screen

Sometimes there is not enough space behind the screen for operation when we install indoor LED screens. It is a perfect solution to use our 640x480mm magnetic front service die-cast cabinet.

SHENZHEN EAGER LED CO., LTD.



Tel: +86-755-23190947

Mob/Whatsapp/Wechat: +86-152-2013-3050

E-mail: manager@eagerled.com

Website: <https://www.eagerled.com>

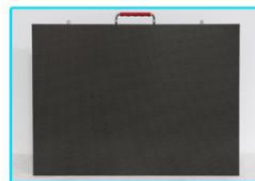
Address: Building C, Zhongyu High-Tech Industrial Park, Heshuikou, Matian, Guangming, Shenzhen, China 518106

SHENZHEN EAGER LED CO., LTD

Easy front service with vacuum chuck tool.



Die-cast cabinet, perfect flatness.



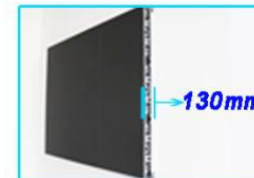
Simple structure, easy wall-mounted installation.



## Features



Can install one cabinet in seconds with 4 strong magnets.



Only 130mm thick for the whole wall-mounted screen.



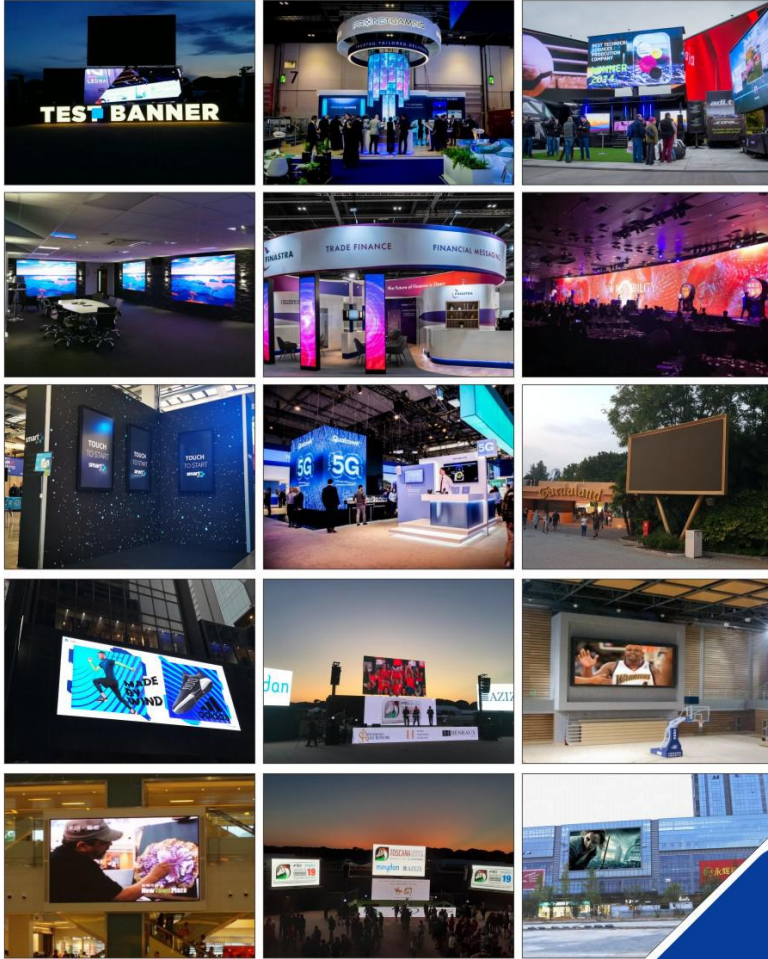
## Applications

4 X Magnet

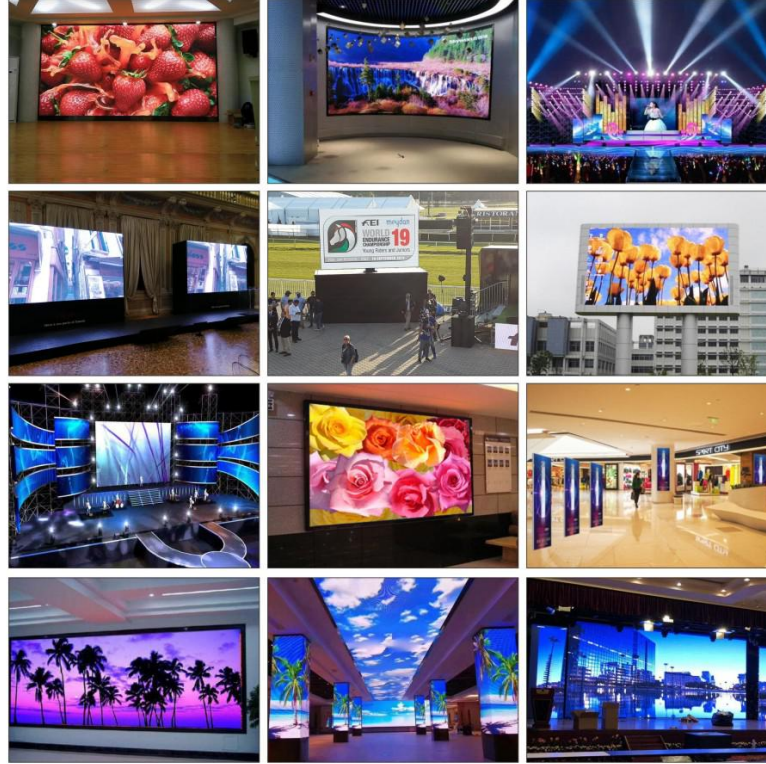




## Case Gallery



## Case Gallery



SHENZHEN EAGER LED CO., LTD.

Tel: +86-755-23190947

Mob/Whatsapp/Wechat: +86-152-2013-3050

E-mail: manager@eagerled.com

Website: <https://www.eagerled.com>

Address: Building C, Zhongyu High-Tech Industrial Park, Heshuikou, Matian, Guangming, Shenzhen, China 518106

**EAGER LED**  
亿格创  
LED DISPLAY

**EAGER LED**  
亿格创



## Case Gallery

SHENZHEN EAGER LED CO., LTD



