



Shenzhen Eager LED Co.,Ltd. is a professional LED display manufacturer & exporter with 12 years experience in Shenzhen China. Since its foundation, EagerLED has been engaged in full color LED displays for indoor and outdoor use and has become one of the leaders in the field of LED display.

EagerLED has offered many kinds of LED display solutions, such as advertising LED display, rental LED display, front service LED display, flexible LED display, poster LED display, transparent LED display, indoor HD LED display, stadium perimeter LED display and creative LED displays.

EagerLED pays great attention to research and development of LED display products. At present, there are more than 15 experienced engineers in the R&D department, doing their utmost to develop the most advanced LED displays. EagerLED's clients can receive information of new products and technologies every now and then.

EagerLED focuses on overseas market since its establishment. Until now, its LED displays have been used in more than 90 countries and areas, especially the countries and areas from Europe, North America, South America and Middle East.

EagerLED would like to establish long-term and mutually beneficial relations with customers and believe that customers are the most important resources of any enterprise.

SHENZHEN EAGER LED CO., LTD.

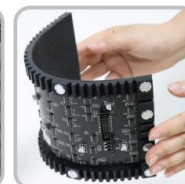
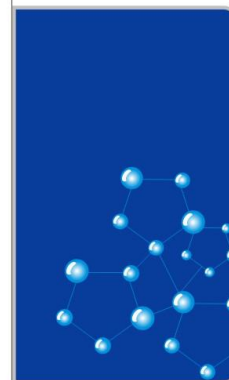
Tel: +86-755-23190947

Mob/Whatsapp/Wechat: +86-152-2013-3050

E-mail: manager@eagerled.com

Website: <https://www.eagerled.com>

Address: Building C, Zhongyu High-Tech Industrial Park, Heshuikou, Matian, Guangming, Shenzhen, China 518106



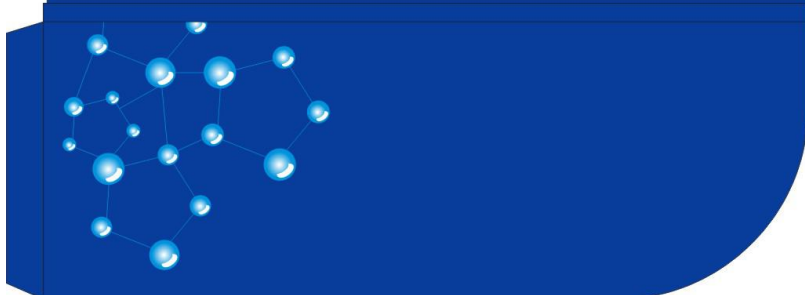
SHENZHEN EAGER LED CO., LTD

PROFESSIONAL

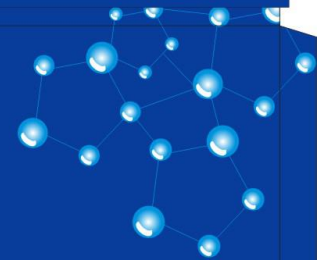
LED DISPLAY

MANUFACTURER & EXPORTER

<https://www.eagerled.com>



Company Certification





SHENZHEN EAGER LED CO., LTD.



Tel: +86-755-23190947

Mob/Whatsapp/Wechat: +86-152-2013-3050

E-mail: manager@eagerled.com

Website: <https://www.eagerled.com>

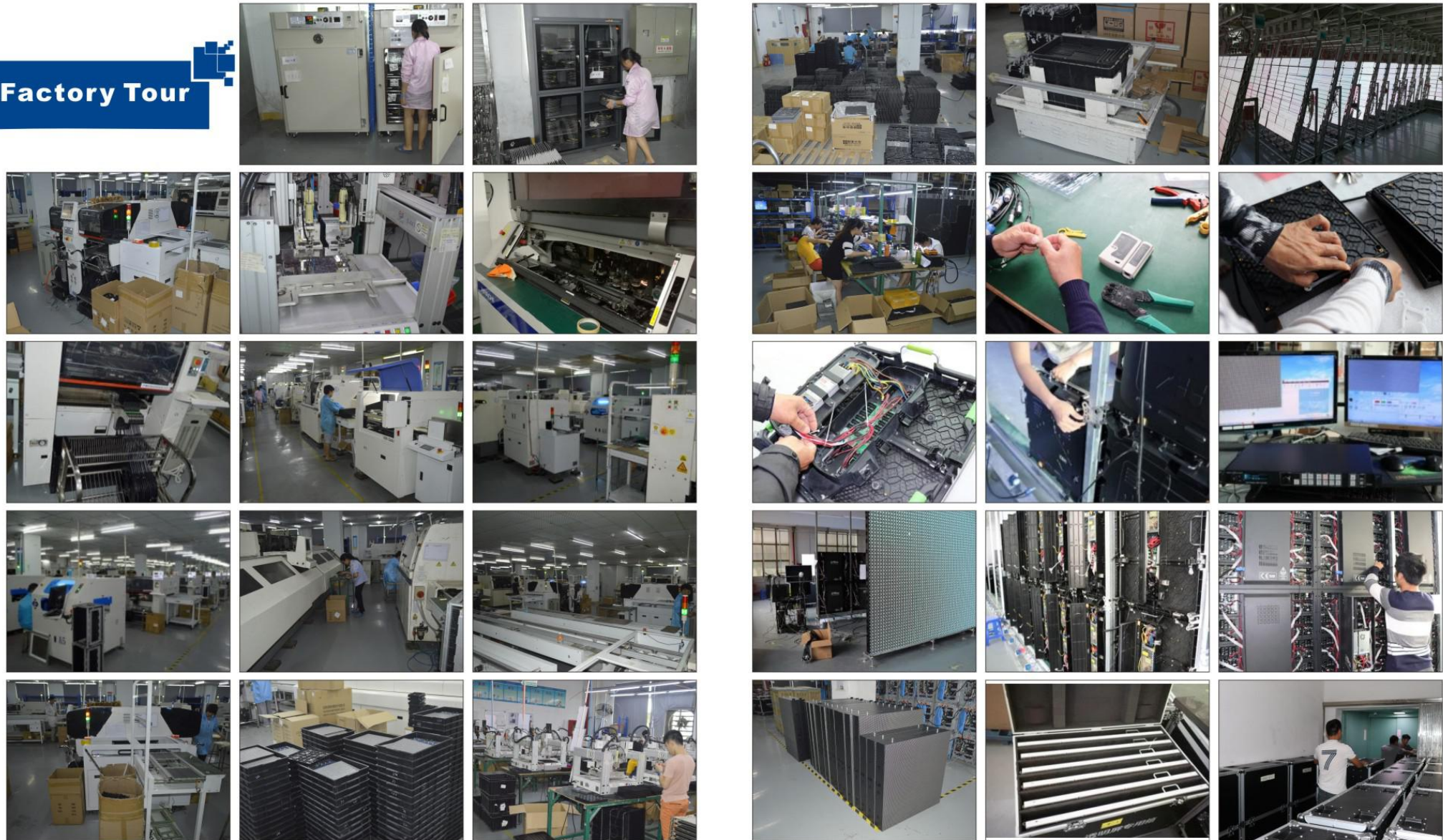
Address: Building C, Zhongyu High-Tech Industrial Park, Heshuikou, Matian, Guangming, Shenzhen, China 518106



Customer Visiting

SHENZHEN EAGER LED CO., LTD

Factory Tour



PARAMETERS

500x500mm Die-Cast Aluminum Rental LED Display

| | Indoor | | Outdoor | |
|--|-----------------------|-----------------------|-----------------------|-----------------------|
| | P2.97 | P3.91 | P3.91 | P4.81 |
| Pixel Pitch (mm) | P2.97 | P3.91 | P3.91 | P4.81 |
| Pixel Configuration | SMD2020 | SMD2020 | SMD1921 | SMD1921 |
| Density (Pixels/m ²) | 112,896 | 65,536 | 65,536 | 43,264 |
| Module Resolution (Pixels) | 84x84 | 64x64 | 64x64 | 52x52 |
| Module Size (mm) | 250x250 | 250x250 | 250x250 | 250x250 |
| Driving Mode (Duty) | 1/28 | 1/16 | 1/16 | 1/13 |
| Cabinet Size (mm) | 500x500 | 500x500 | 500x500 | 500x500 |
| Cabinet Weight (KG) | 7.8 | 7.8 | 7.8 | 7.8 |
| Brightness (cd/m ²) | ≥1,000 | ≥1,200 | ≥6,000 | ≥6,000 |
| Viewing Angle (°) | 120 | 120 | 120 | 120 |
| Gray Grade (Bits) | 14 | 14 | 14 | 14 |
| Operation Power | AC100-240V 50-60Hz | AC100-240V 50-60Hz | AC100-240V 50-60Hz | AC100-240V 50-60Hz |
| Max. Power Consumption (W/m ²) | 480 | 576 | 720 | 560 |
| Avg. Power Consumption (W/m ²) | 160 | 192 | 240 | 190 |
| Frame Frequency (Hz) | ≥60 | ≥60 | ≥60 | ≥60 |
| Refresh Frequency (Hz) | ≥3,840 | ≥3,840 | ≥3,840 | ≥3,840 |
| Working Temperature (°C) | -20~+60 | -20~+60 | -20~+60 | -20~+60 |
| Lifetime (Hours) | 100,000 | 100,000 | 100,000 | 100,000 |
| Protection Grade | IP 31 | IP 31 | IP 65 | IP 65 |








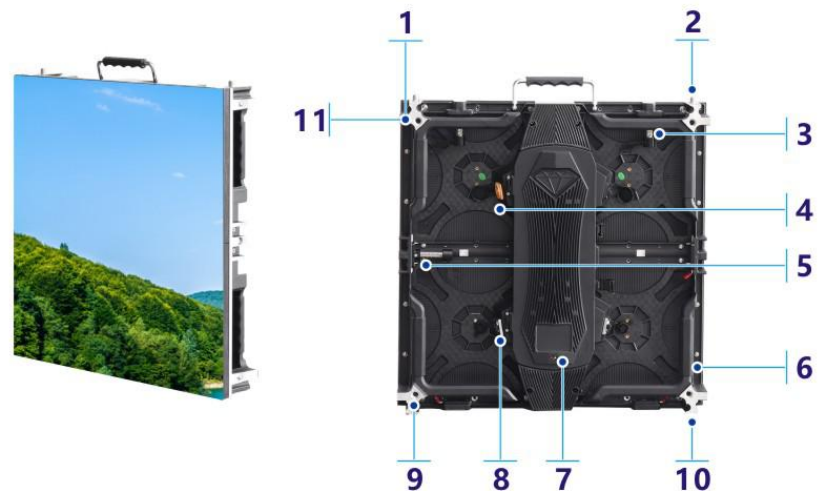
500x500 Rental LED Display-P series



500x500mm rental LED display is our hot-selling rental product. It boasts of precise cabinet, elegant design and one-person operation. It has anti-collision feet on the cabinet bottom and positioning balls on the cabinet sides. The cabinet is strong enough to withstand person climbing for operation and maintenance.

SHENZHEN EAGER LED CO., LTD.

FEATURES

-  **Easy operation:** One-person installation, disassembly and maintenance.
-  **Protective design:** anti-collision feet on the cabinet bottom.
-  **Adaptable design:** can make concave and convex curves through curve locks.
-  **Strong cabinet:** strong enough to withstand person climbing for maintenance.
-  **Better heat dissipation:** install power supply on the door, using the door as cooling fin.

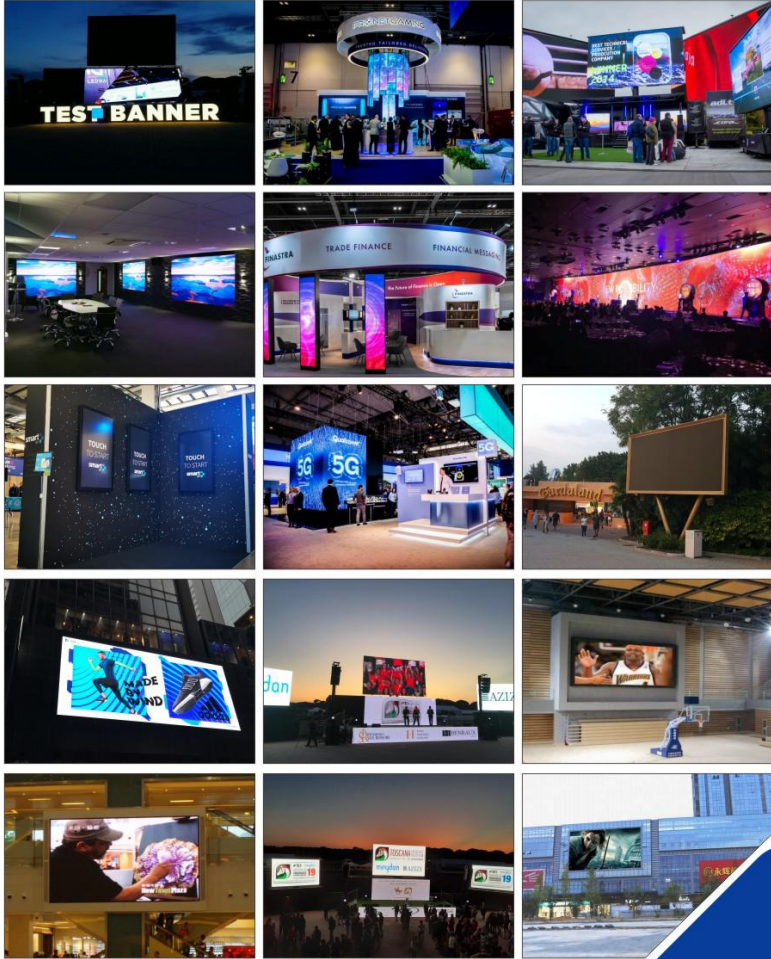


- | | | |
|---|---|---|
|  |  |  |
|  |  |  |
|  |  |  |
|  |  | |

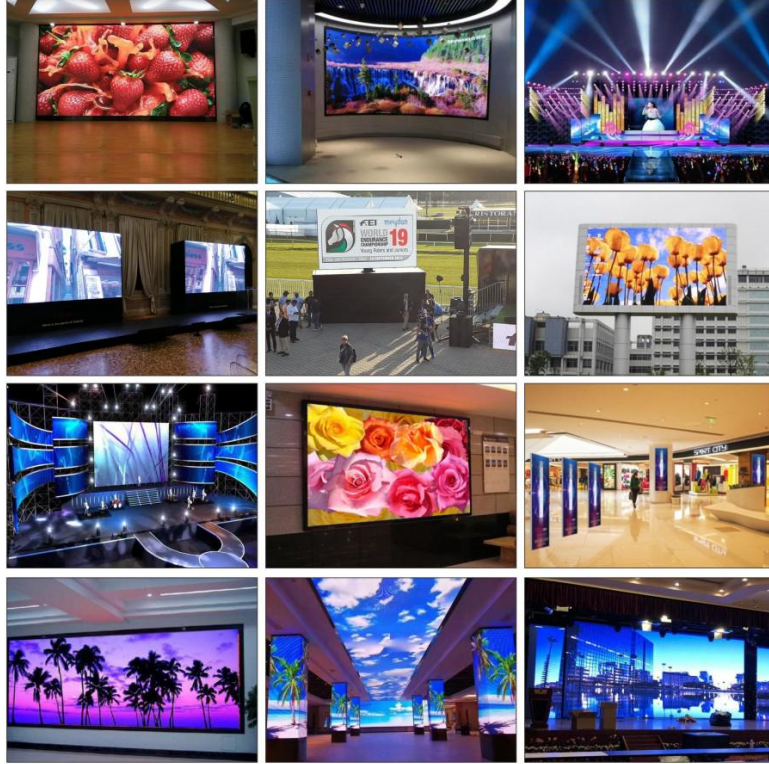
Applications



Case Gallery



Case Gallery



SHENZHEN EAGER LED CO., LTD.

EAGER LED
亿格创
LED DISPLAY

Tel: +86-755-23190947

Mob/Whatsapp/Wechat: +86-152-2013-3050

E-mail: manager@eagerled.com

Website: <https://www.eagerled.com>

Address: Building C, Zhongyu High-Tech Industrial Park, Heshuikou, Matian, Guangming, Shenzhen, China
518106

EAGER LED
亿格创



Case Gallery

SHENZHEN EAGER LED CO., LTD

