



Shenzhen Eager LED Co.,Ltd. is a professional LED display manufacturer & exporter with 12 years experience in Shenzhen China. Since its foundation, EagerLED has been engaged in full color LED displays for indoor and outdoor use and has become one of the leaders in the field of LED display.

EagerLED has offered many kinds of LED display solutions, such as advertising LED display, rental LED display, front service LED display, flexible LED display, poster LED display, transparent LED display, indoor HD LED display, stadium perimeter LED display and creative LED displays.

EagerLED pays great attention to research and development of LED display products. At present, there are more than 15 experienced engineers in the R&D department, doing their utmost to develop the most advanced LED displays. EagerLED's clients can receive information of new products and technologies every now and then.

EagerLED focuses on overseas market since its establishment. Until now, its LED displays have been used in more than 90 countries and areas, especially the countries and areas from Europe, North America, South America and Middle East.

EagerLED would like to establish long-term and mutually beneficial relations with customers and believe that customers are the most important resources of any enterprise.

#### SHENZHEN EAGER LED CO., LTD.

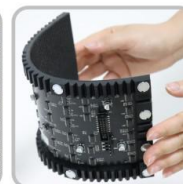
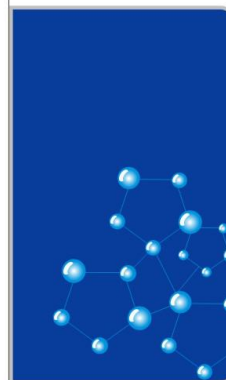
Tel: +86-755-23190947

Mob/Whatsapp/Wechat: +86-152-2013-3050

E-mail: manager@eagerled.com

Website: <https://www.eagerled.com>

Address: Building C, Zhongyu High-Tech Industrial Park, Heshuikou, Matian, Guangming, Shenzhen, China 518106



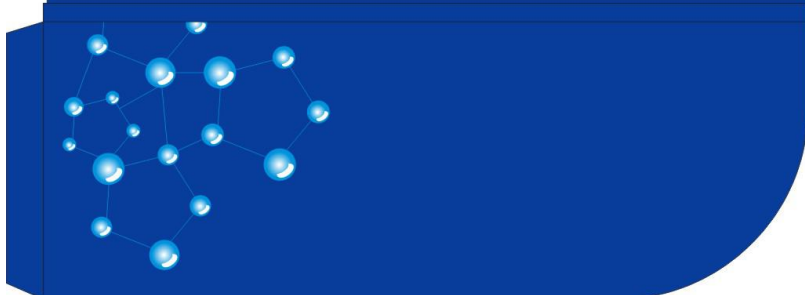
## SHENZHEN EAGER LED CO., LTD

PROFESSIONAL

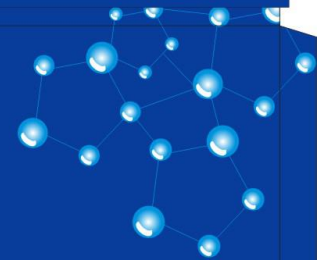
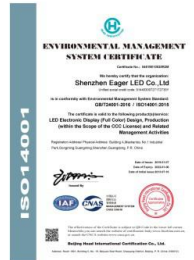
LED DISPLAY

MANUFACTURER & EXPORTER

<https://www.eagerled.com>



# Company Certification







**SHENZHEN EAGER LED CO., LTD.**



Tel: +86-755-23190947

Mob/Whatsapp/Wechat: +86-152-2013-3050

E-mail: [manager@eagerled.com](mailto:manager@eagerled.com)

Website: <https://www.eagerled.com>

Address: Building C, Zhongyu High-Tech Industrial Park, Heshuikou, Matian, Guangming, Shenzhen, China 518106

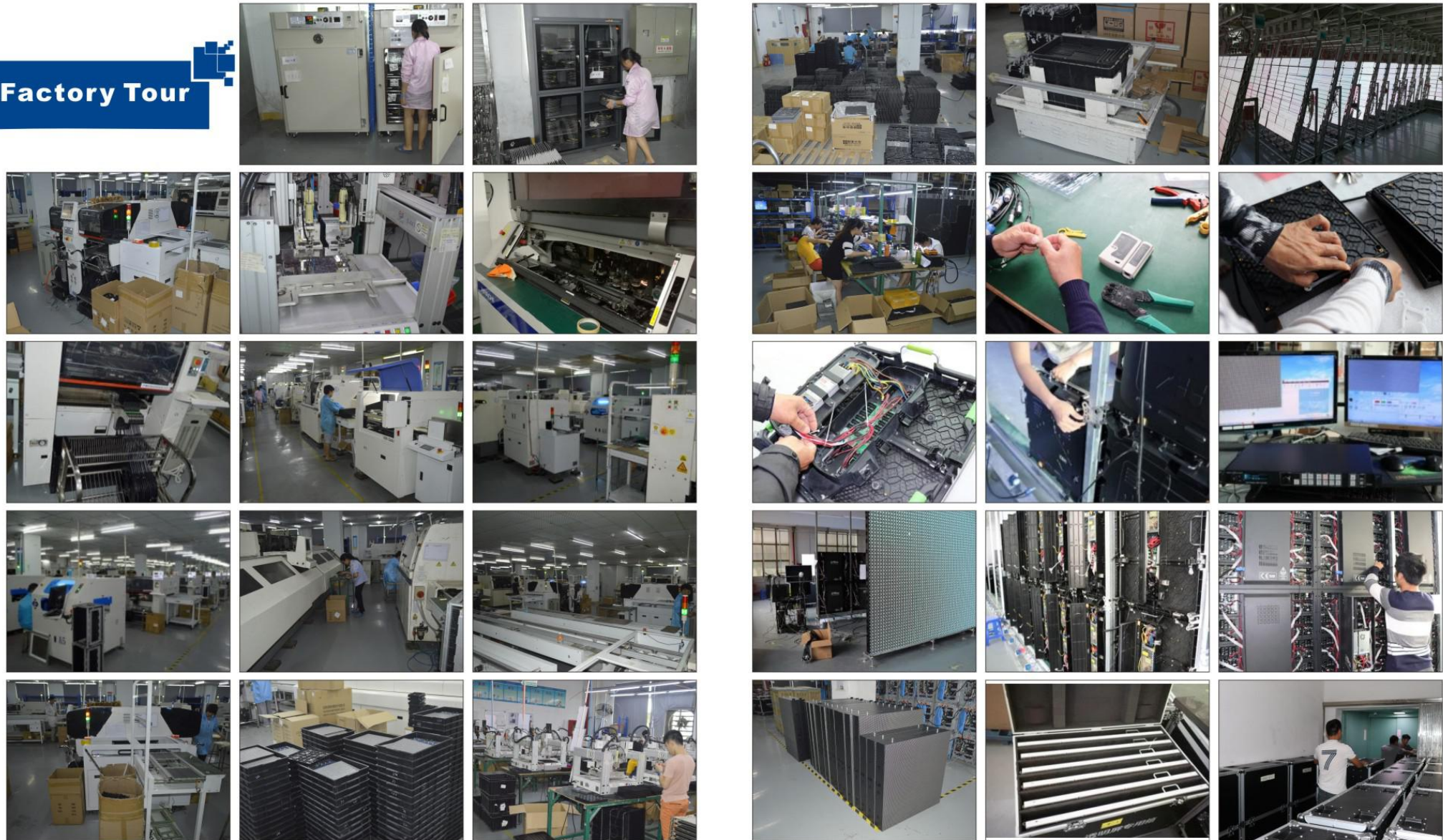


## Customer Visiting

**SHENZHEN EAGER LED CO., LTD**



## Factory Tour





## PARAMETERS

### 500x1000mm Die-Cast Aluminum Rental LED Display

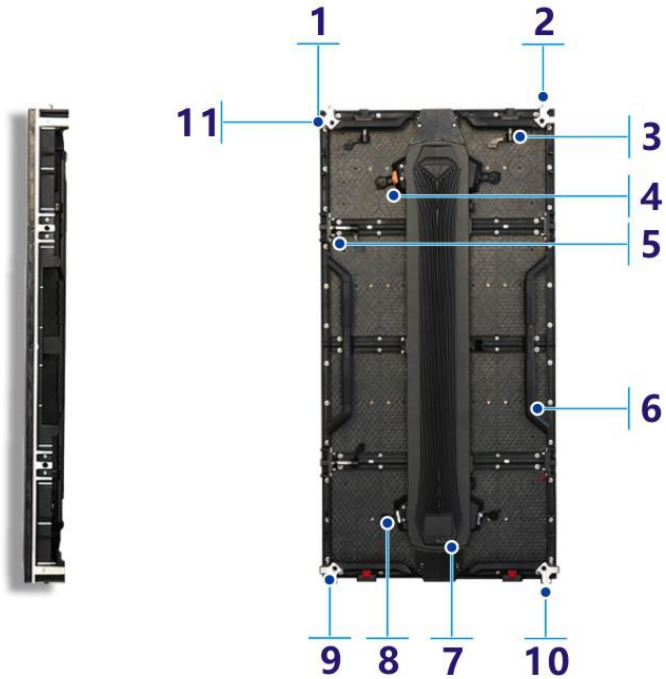
	Indoor		Outdoor	
	P2.97	P3.91	P3.91	P4.81
Pixel Pitch (mm)	P2.97	P3.91	P3.91	P4.81
Pixel Configuration	SMD2020	SMD2020	SMD1921	SMD1921
Density (Pixels/m <sup>2</sup> )	112,896	65,536	65,536	43,264
Module Resolution (Pixels)	82x82	64x64	64x64	52x52
Module Size (mm)	250x250	250x250	250x250	250x250
Driving Mode (Duty)	1/28	1/16	1/16	1/13
Cabinet Size (mm)	500x1000	500x1000	500x1000	500x1000
Cabinet Weight (KG)	15	15	15	15
Brightness (CD/m <sup>2</sup> )	≥1,000	≥1,200	≥6,000	≥6,000
Viewing Angle (°)	120	120	120	120
Gray Grade (Bits)	14	14	14	14
Operation Power	AC100-240V 50-60Hz	AC100-240V 50-60Hz	AC100-240V 50-60Hz	AC100-240V 50-60Hz
Max. Power Consumption (W/m <sup>2</sup> )	480	576	720	560
Avg. Power Consumption (W/m <sup>2</sup> )	160	192	240	190
Frame Frequency (Hz)	≥60	≥60	≥60	≥60
Refresh Frequency (Hz)	≥3,840	≥3,840	≥3,840	≥3,840
Working Temperature (°C)	-20~+60	-20~+60	-20~+60	-20~+60
Lifetime (Hours)	100,000	100,000	100,000	100,000
Protection Grade	IP 31	IP 31	IP 65	IP 65



### 500x1000 Rental LED Display-P series

500x1000mm rental LED display is more cost-effective than 500x500mm series . It boasts of precise cabinet, elegant design and one-person operation. It has anti-collision feet on the cabinet bottom and positioning balls on the cabinet sides. The cabinet is strong enough to withstand person climbing for operation and maintenance.

SHENZHEN EAGER LED CO., LTD.



1.Positioning Ball



2.Locating Pin



3.Top Lock



4.Power Connector



5.Side Lock



6.Cabinet Handle



7.Semaphore



8.Signal Connector



9.M10 Screw Hole



10.Anti-collision Foot



11.Ball Positioning Hole

## ◆ FEATURES

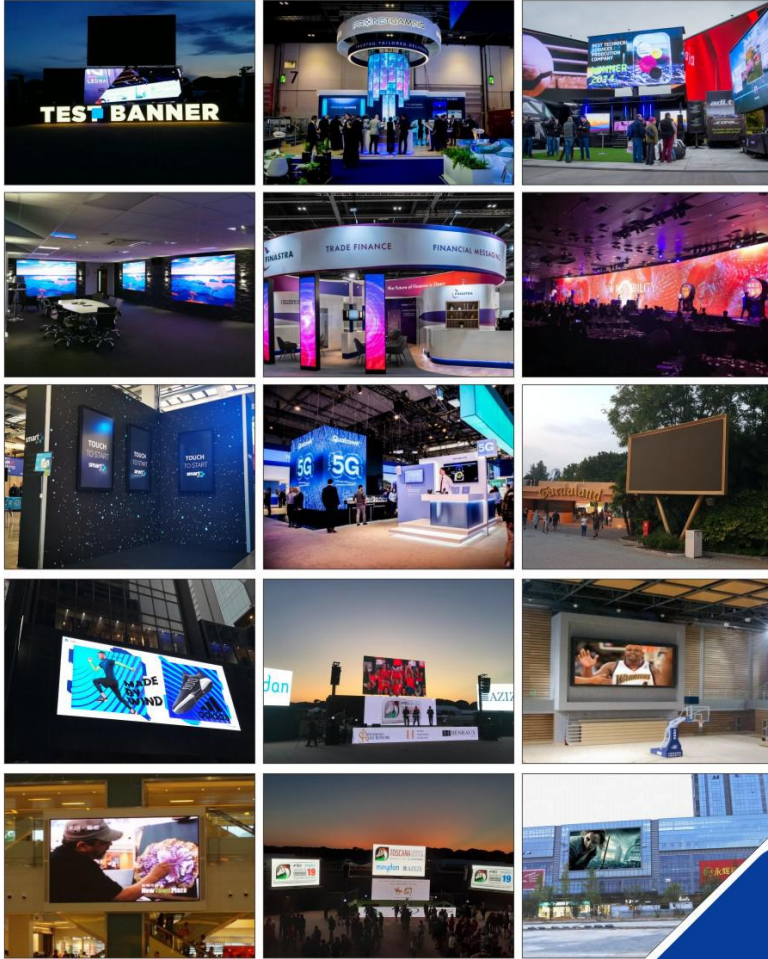
- ◇ **Easy operation:** One-person installation, disassembly and maintenance.
- ◇ **Protective design:** anti-collision feet on the cabinet bottom.
- ◇ **Adaptable design:** can make concave and convex curves through curve locks.
- ◇ **Strong cabinet:** strong enough to withstand person climbing for maintenance.
- ◇ **Better heat dissipation:** install power supply on the door, using the door as cooling fin.

## ◆ Applications

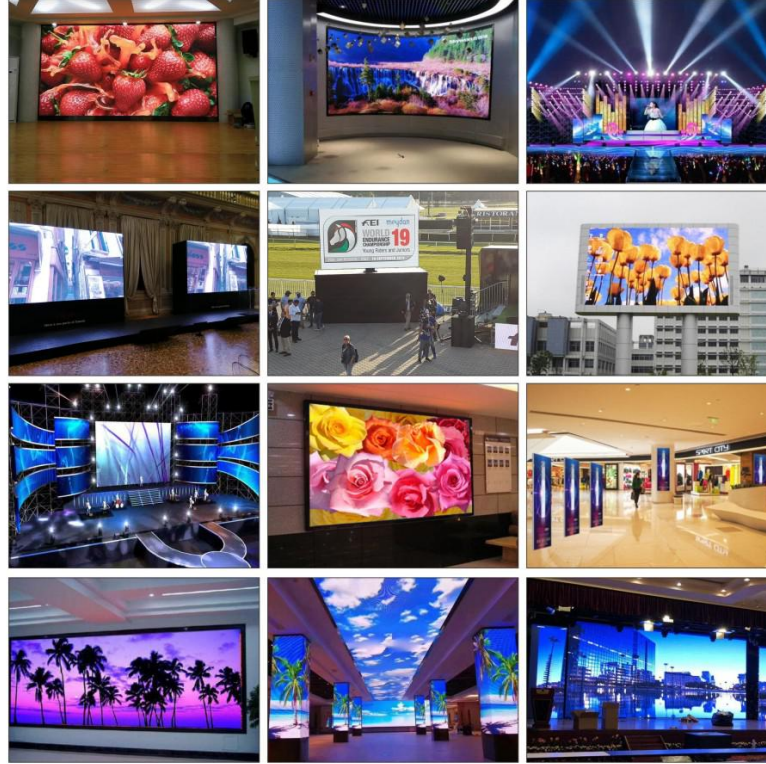




## Case Gallery



## Case Gallery



SHENZHEN EAGER LED CO., LTD.

Tel: +86-755-23190947

Mob/Whatsapp/Wechat: +86-152-2013-3050

E-mail: [manager@eagerled.com](mailto:manager@eagerled.com)

Website: <https://www.eagerled.com>

Address: Building C, Zhongyu High-Tech Industrial Park, Heshuikou, Matian, Guangming, Shenzhen, China 518106

**EAGER LED**  
亿格创  
LED DISPLAY

**EAGER LED**  
亿格创



## Case Gallery

SHENZHEN EAGER LED CO., LTD



