



Shenzhen Eager LED Co.,Ltd. is a professional LED display manufacturer & exporter with 12 years experience in Shenzhen China. Since its foundation, EagerLED has been engaged in full color LED displays for indoor and outdoor use and has become one of the leaders in the field of LED display.

EagerLED has offered many kinds of LED display solutions, such as advertising LED display, rental LED display, front service LED display, flexible LED display, poster LED display, transparent LED display, indoor HD LED display, stadium perimeter LED display and creative LED displays.

EagerLED pays great attention to research and development of LED display products. At present, there are more than 15 experienced engineers in the R&D department, doing their utmost to develop the most advanced LED displays. EagerLED's clients can receive information of new products and technologies every now and then.

EagerLED focuses on overseas market since its establishment. Until now, its LED displays have been used in more than 90 countries and areas, especially the countries and areas from Europe, North America, South America and Middle East.

EagerLED would like to establish long-term and mutually beneficial relations with customers and believe that customers are the most important resources of any enterprise.

#### SHENZHEN EAGER LED CO., LTD.

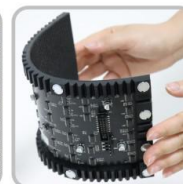
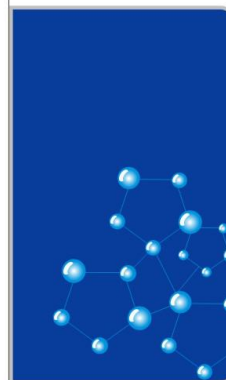
Tel: +86-755-23190947

Mob/Whatsapp/Wechat: +86-152-2013-3050

E-mail: manager@eagerled.com

Website: <https://www.eagerled.com>

Address: Building C, Zhongyu High-Tech Industrial Park, Heshuikou, Matian, Guangming, Shenzhen, China 518106



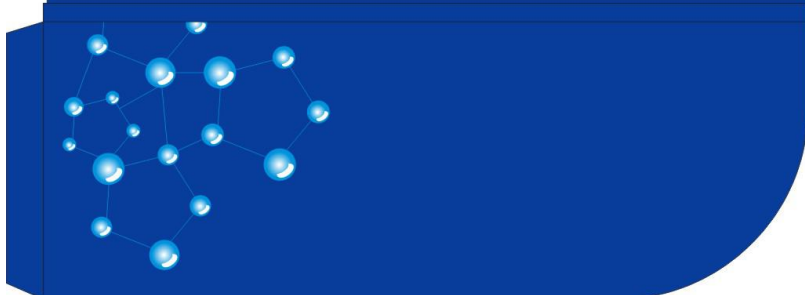
## SHENZHEN EAGER LED CO., LTD

PROFESSIONAL

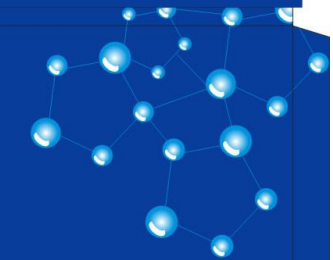
LED DISPLAY

MANUFACTURER & EXPORTER

<https://www.eagerled.com>



# Company Certification







**SHENZHEN EAGER LED CO., LTD.**



Tel: +86-755-23190947

Mob/Whatsapp/Wechat: +86-152-2013-3050

E-mail: [manager@eagerled.com](mailto:manager@eagerled.com)

Website: <https://www.eagerled.com>

Address: Building C, Zhongyu High-Tech Industrial Park, Heshuikou, Matian, Guangming, Shenzhen, China 518106



## Customer Visiting

**SHENZHEN EAGER LED CO., LTD**



## Factory Tour





## PARAMETERS

### 500x1000mm Die-Cast Aluminum Rental LED Display

|  | Indoor                |                       | Outdoor                   |                           |
|--|-----------------------|-----------------------|---------------------------|---------------------------|
|  | P2.97                 | P3.91                 | P3.91                     | P4.81                     |
| Pixel Pitch (mm)                           | P2.97                 | P3.91                 | P3.91                     | P4.81                     |
| Pixel Configuration                        | SMD2020               | SMD2020               | SMD1921                   | SMD1921                   |
| Density (Pixels/m <sup>2</sup> )           | 112,896               | 65,536                | 65,536                    | 43,264                    |
| Module Resolution (Pixels)                 | 84x84                 | 64x64                 | 64x64                     | 52x52                     |
| Module Size (mm)                           | 250x250               | 250x250               | 250x250                   | 250x250                   |
| Driving Mode (Duty)                        | 1/28                  | 1/16                  | 1/16                      | 1/13                      |
| Cabinet Size (mm)                          | 500x1000              | 500x1000              | 500x1000                  | 500x1000                  |
| Cabinet Weight (KG)                        | 12                    | 12                    | 13                        | 13                        |
| Brightness (CD/m <sup>2</sup> )            | ≥1,000                | ≥1,200                | ≥6,000                    | ≥6,000                    |
| Viewing Angle (°)                          | 120                   | 120                   | 120                       | 120                       |
| Gray Grade (Bits)                          | 14                    | 14                    | 14                        | 14                        |
| Operation Power                            | AC100-240V<br>50-60Hz | AC100-240V<br>50-60Hz | AC100-240V<br>50-60Hz     | AC100-240V<br>50-60Hz     |
| Max. Power Consumption (W/m <sup>2</sup> ) | 480                   | 576                   | 720                       | 560                       |
| Avg. Power Consumption (W/m <sup>2</sup> ) | 160                   | 192                   | 240                       | 190                       |
| Frame Frequency (Hz)                       | ≥60                   | ≥60                   | ≥60                       | ≥60                       |
| Refresh Frequency (Hz)                     | ≥3,840                | ≥3,840                | ≥3,840                    | ≥3,840                    |
| Working Temperature (°C)                   | -20~+60               | -20~+60               | -20~+60                   | -20~+60                   |
| Lifetime (Hours)                           | 100,000               | 100,000               | 100,000                   | 100,000                   |
| Protection Grade                           | IP 31                 | IP 31                 | IP65(front)<br>IP54(rear) | IP65(front)<br>IP54(rear) |



### 500x1000 Rental LED Display-E series

Compared to 500x1000 P series, 500x1000 E series is much more cost-effective. Beside this, it has two fast locks on left and right side, which ensure faster assembly and better screen flatness. It also has anti-collision feet on the cabinet bottom, which protect the edges of the LED modules. The die-cast aluminum cabinet is precise and looks nice. And we can print customized logo on the door.

SHENZHEN EAGER LED CO., LTD.



Tel: +86-755-23190947

Mob/Whatsapp/Wechat: +86-152-2013-3050

E-mail: manager@eagerled.com

Website: <https://www.eagerled.com>

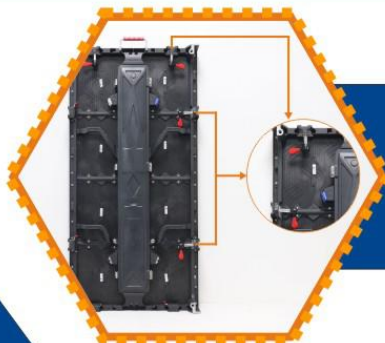
Address: Building C, Zhongyu High-Tech Industrial Park, Heshuikou, Matian, Guangming, Shenzhen, China  
518106

SHENZHEN EAGER LED CO., LTD

## FEATURES

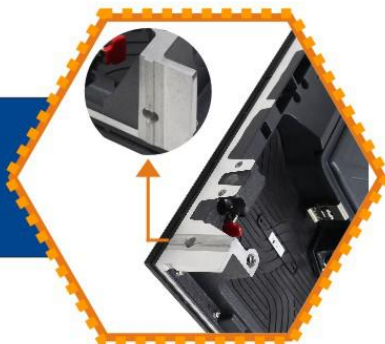


**1 Easy Operation:**  
One-person installation, disassembly and maintenance.

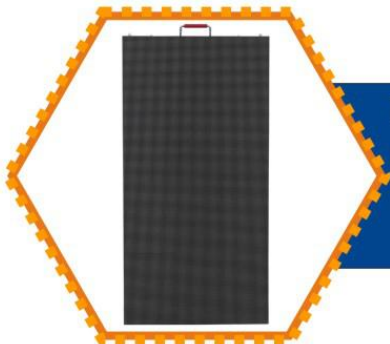


**4 Two Fast Locks on Left and Right Side:**  
Ensure faster assembly and better screen flatness.

**2 Protective Design:**  
anti-collision feet on the cabinet bottom.



**5 Customized Logo on the Door:**  
We can print your company logo on the cabinet door, good for your marketing.



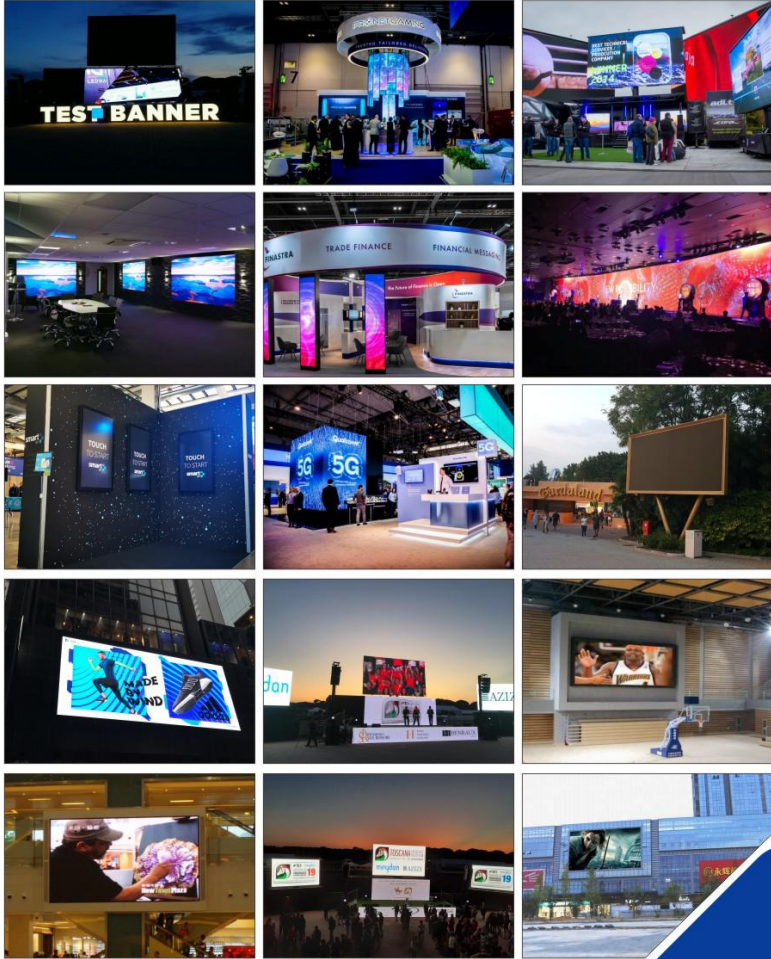
**3 Good Flatness:**  
The gaps between modules, gaps between cabinets and flatness of the whole screen are controlled to be  $\pm 0.1$ mm.

**6 High Cost-effective:**  
As the market is becoming more and more competitive, high cost performance is really important. Hence, we launch this high cost-effective 500x500 E series, which help your marketing.

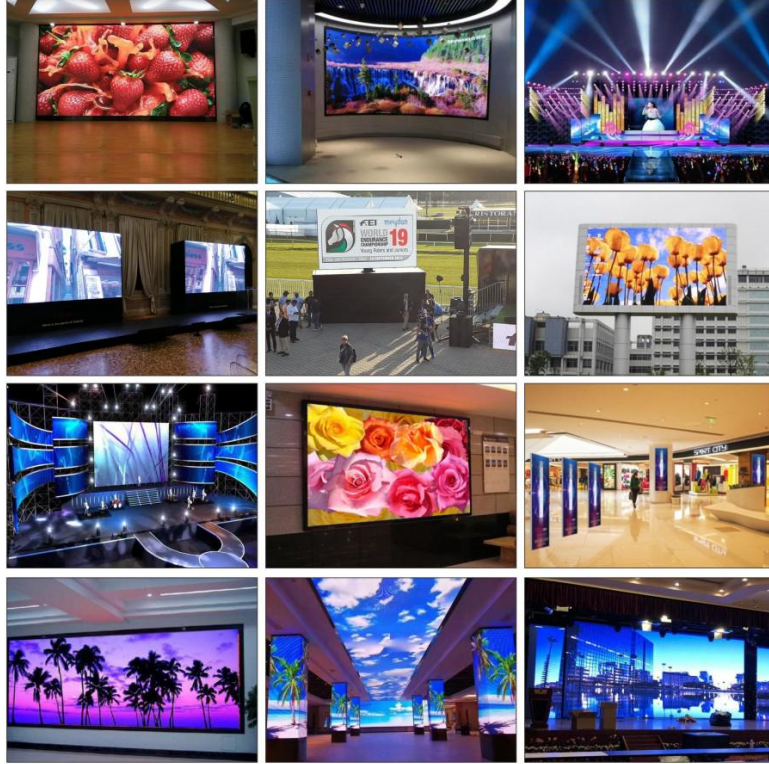




## Case Gallery



## Case Gallery



SHENZHEN EAGER LED CO., LTD.

Tel: +86-755-23190947

Mob/Whatsapp/Wechat: +86-152-2013-3050

E-mail: [manager@eagerled.com](mailto:manager@eagerled.com)

Website: <https://www.eagerled.com>

Address: Building C, Zhongyu High-Tech Industrial Park, Heshuikou, Matian, Guangming, Shenzhen, China 518106

**EAGER LED**  
亿格创  
LED DISPLAY

**EAGER LED**  
亿格创



## Case Gallery

SHENZHEN EAGER LED CO., LTD



