

Shenzhen Eager LED Co.,Ltd. is a professional LED display manufacturer & exporter with 12 years experience in Shenzhen China. Since its foundation, EagerLED has been engaged in full color LED displays for indoor and outdoor use and has become one of the leaders in the field of LED display.

EagerLED has offered many kinds of LED display solutions, such as advertising LED display, rental LED display, front service LED display, flexible LED display, poster LED display, transparent LED display, indoor HD LED display, stadium perimeter LED display and creative LED displays.

EagerLED pays great attention to research and development of LED display products. At present, there are more than 15 experienced engineers in the R&D department, doing their utmost to develop the most advanced LED displays. EagerLED's clients can receive information of new products and technologies every now and then.

EagerLED focuses on overseas market since its establishment. Until now, its LED displays have been used in more than 90 countries and areas, especially the countries and areas from Europe, North America, South America and Middle East.

EagerLED would like to establish long-term and mutually beneficial relations with customers and believe that customers are the most important resources of any enterprise.

SHENZHEN EAGER LED CO., LTD.

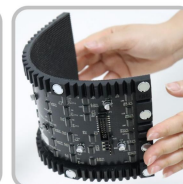
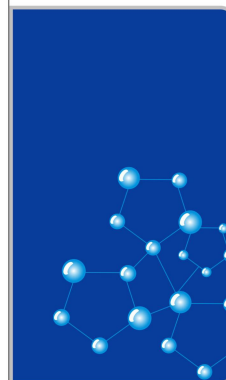
Tel: +86-755-23190947

Mob/Whatsapp/Wechat: +86-152-2013-3050

E-mail: manager@eagerled.com

Website: <https://www.eagerled.com>

Address: Building C, Zhongyu High-Tech Industrial Park, Heshuikou, Matian, Guangming, Shenzhen, China 518106



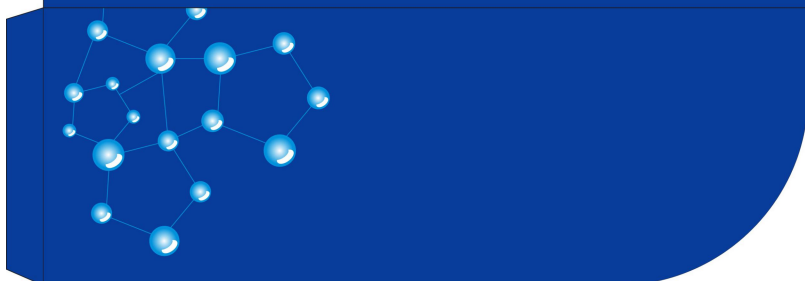
SHENZHEN EAGER LED CO., LTD

PROFESSIONAL

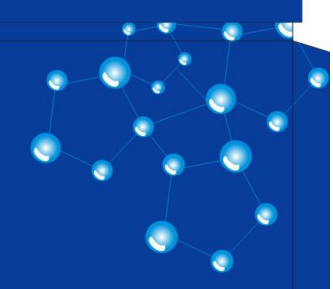
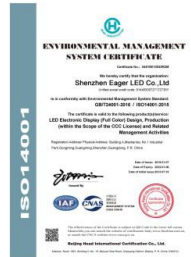
LED DISPLAY

MANUFACTURER & EXPORTER

<https://www.eagerled.com>



Company Certification





SHENZHEN EAGER LED CO., LTD.



Tel: +86-755-23190947

Mob/Whatsapp/Wechat: +86-152-2013-3050

E-mail: manager@eagerled.com

Website: <https://www.eagerled.com>

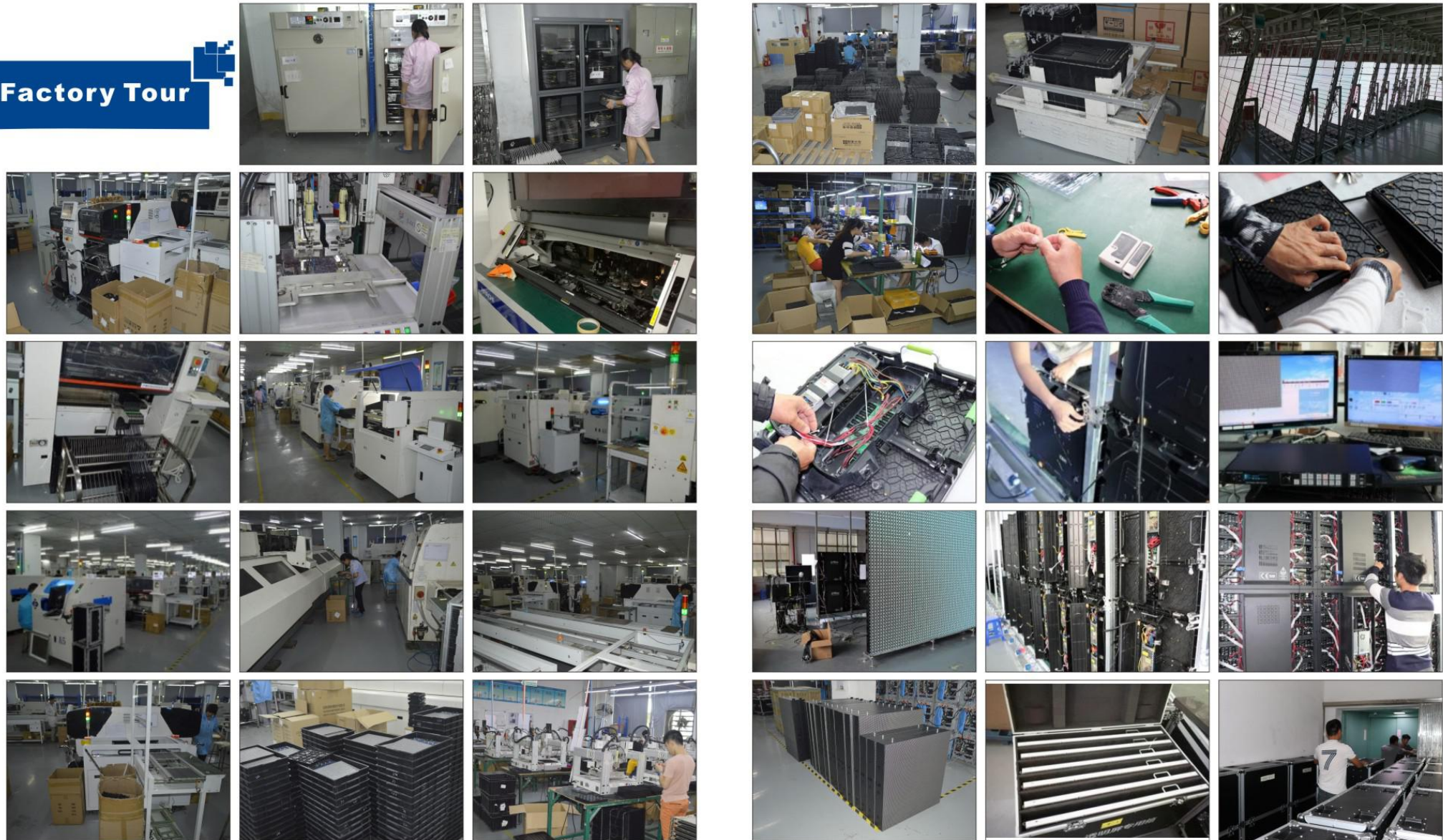
Address: Building C, Zhongyu High-Tech Industrial Park, Heshuikou, Matian, Guangming, Shenzhen, China 518106



Customer Visiting

SHENZHEN EAGER LED CO., LTD

Factory Tour



PARAMETERS

500x500mm Die-Cast Aluminum Rental LED Display Parameter

	Indoor		Outdoor	
	P2.97	P3.91	P3.91	P4.81
Pixel Pitch (mm)	P2.97	P3.91	P3.91	P4.81
Pixel Configuration	SMD2020	SMD2020	SMD1921	SMD1921
Density (Pixels/m ²)	112,896	65,536	65,536	43,264
Module Resolution (Pixels)	84x84	64x64	64x64	52x52
Module Size (mm)	250x250	250x250	250x250	250x250
Driving Mode (Duty)	1/28	1/16	1/16	1/13
Cabinet Size (mm)	500x500	500x500	500x500	500x500
Cabinet Weight (KG)	7.2	7.2	9	9
Brightness (cd/m ²)	≥1,000	≥1,200	≥6,000	≥6,000
Viewing Angle (°)	120	120	120	120
Gray Grade (Bits)	14	14	14	14
Operation Power	AC100-240V 50-60Hz	AC100-240V 50-60Hz	AC100-240V 50-60Hz	AC100-240V 50-60Hz
Max. Power Consumption (W/m ²)	480	576	720	560
Avg. Power Consumption (W/m ²)	160	192	240	190
Frame Frequency (Hz)	≥60	≥60	≥60	≥60
Refresh Frequency (Hz)	≥3,840	≥3,840	≥3,840	≥3,840
Working Temperature (°C)	-20~+60	-20~+60	-20~+60	-20~+60
Lifetime (Hours)	100,000	100,000	100,000	100,000
Protection Grade	IP 31	IP 31	IP65(front) IP54(rear)	IP65(front) IP54(rear)



500x500 Rental LED Display-500H Series

500H series is our high-end rental product. First of all, backup design for both power and data, ensure continuous work for the screen, hence we also call it Never-off Screen. Secondly, it is HUB-card design, no cables between LED module and receiving card&power supply, low failure rate and looks tidy. Thirdly, the LED module is magnetic front service, can replace the LED module quickly.

SHENZHEN EAGER LED CO., LTD.

FEATURES

1 Backup design for both power and data:

ensures continuous work for the screen, we also call it Never-off screen.



Power Connector

Data Connector

Backup Power Connector

Backup Data Port

2 HUB-Card Design:

no headache cables, looks clean and tidy, much lower failure rate.



3 Magnetic front service design:

quick maintenance, save much labor during the events.



4 Perfect flatness:

due to high-precise cabinet and high quality LED module frame.



5 Thin and light weight:

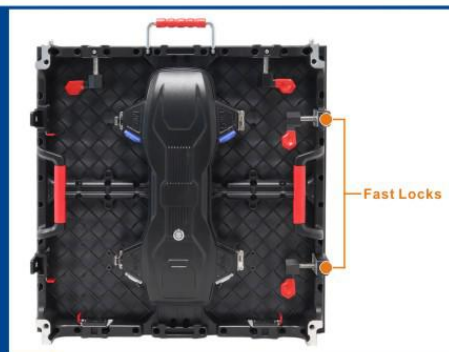
only 85mm thick and 7.2KG/pcs.



6

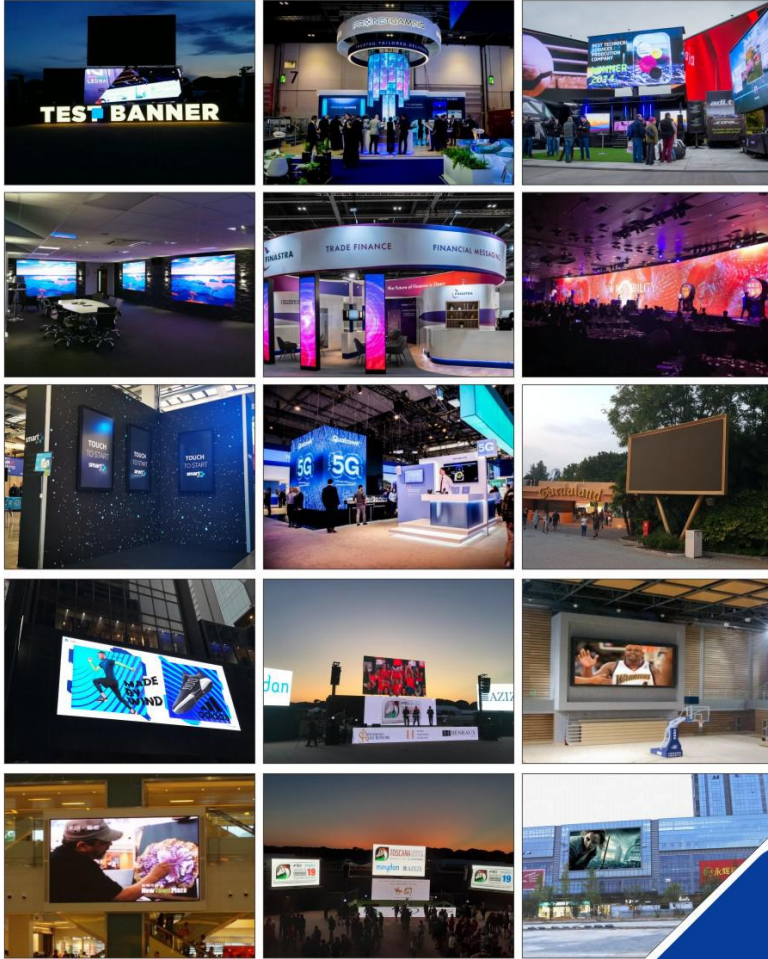
Two fast locks on left and right side:

ensure faster assembly and better screen flatness.

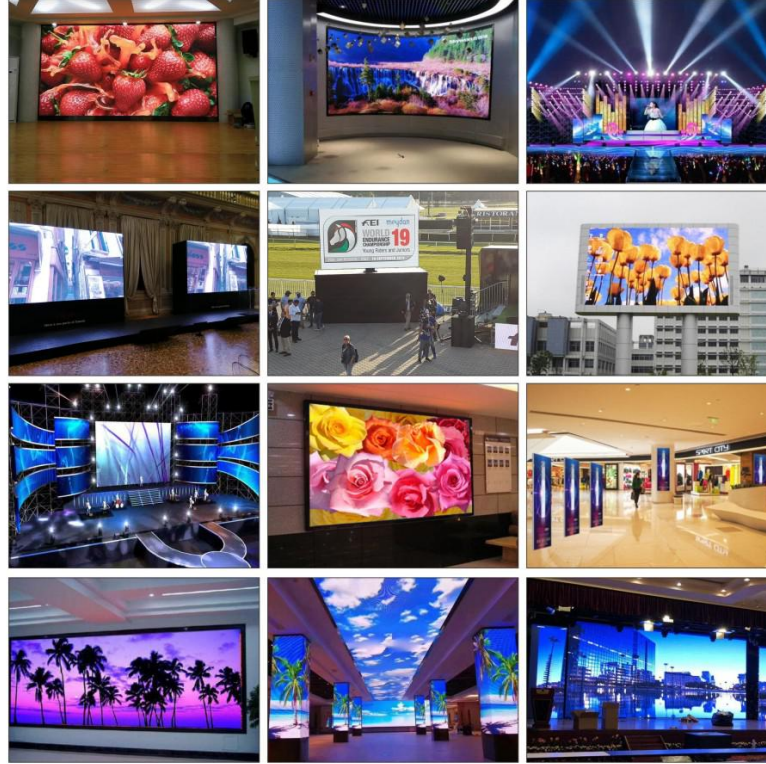


Fast Locks

Case Gallery



Case Gallery



SHENZHEN EAGER LED CO., LTD.

Tel: +86-755-23190947

Mob/Whatsapp/Wechat: +86-152-2013-3050

E-mail: manager@eagerled.com

Website: <https://www.eagerled.com>

Address: Building C, Zhongyu High-Tech Industrial Park, Heshuikou, Matian, Guangming, Shenzhen, China 518106

EAGER LED
亿格创
LED DISPLAY

EAGER LED
亿格创



Case Gallery

SHENZHEN EAGER LED CO., LTD

